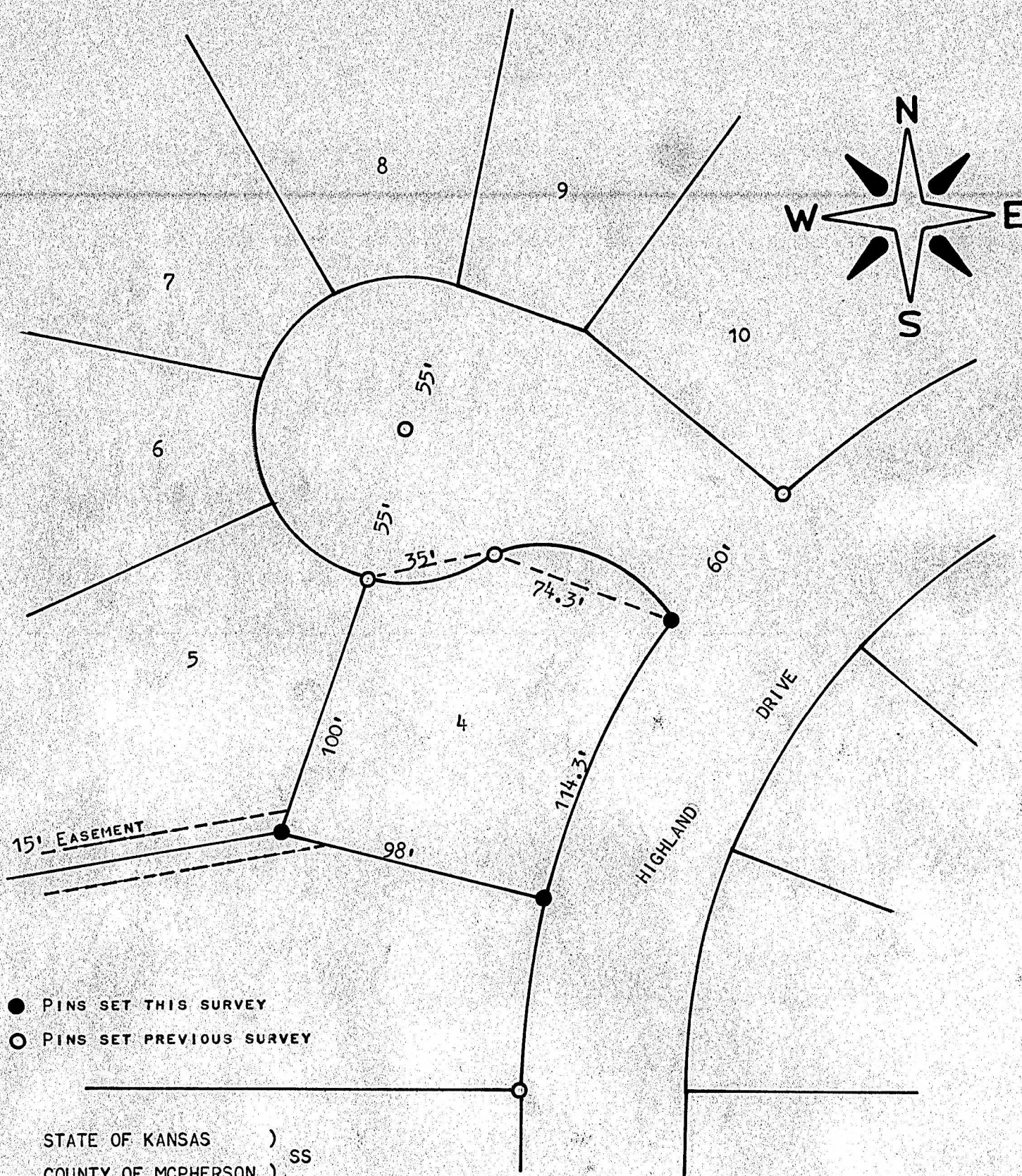


NORTH HIGH ADDITION
MCPHERSON, KANSAS



STATE OF KANSAS)
COUNTY OF MCPHERSON) SS

I, FRANCIS RANKIN, COUNTY ENGINEER OF MCPHERSON COUNTY, KANSAS, DO HEREBY CERTIFY THAT UNDER MY SUPERVISION A SURVEY WAS MADE OF LOT 4, BLOCK 4, NORTH HIGH ADDITION TO THE CITY OF MCPHERSON, AND THE ABOVE PLAT IS A TRUE EXHIBIT OF SAID SURVEY AS FAR AS IT IS KNOWN TO ME.

SURVEY CALLED FOR BY HARRIS DEVELOPMENT CO.

SIGNED THIS 5 DAY OF AUGUST

F. R. Rankin
F. R. RANKIN
COUNTY ENGINEER
MCPHERSON COUNTY, KANSAS

