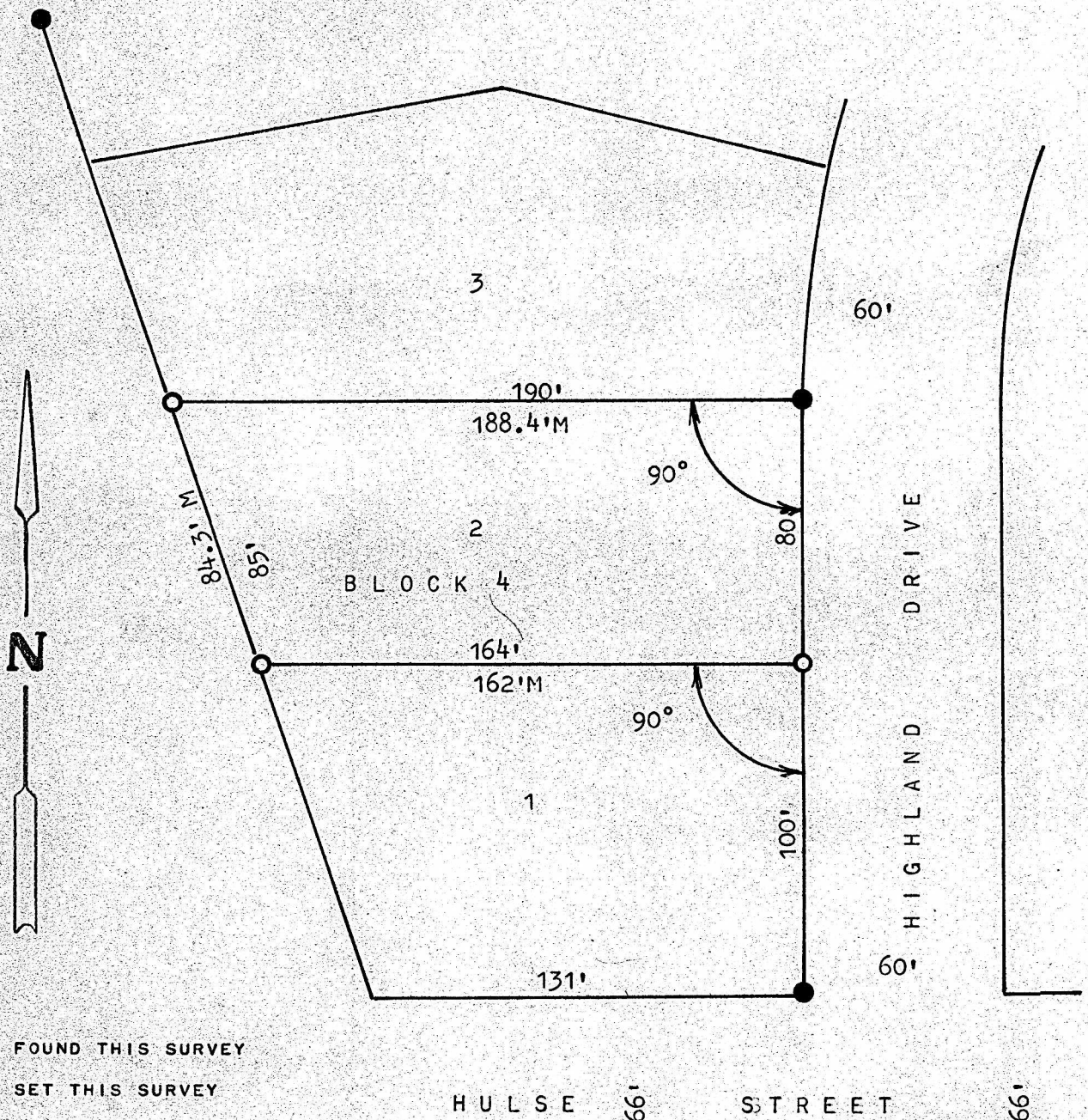


A SURVEY OF LOT 2, BLOCK 4,
NORTH HIGH ADDITION, MCPHERSON



STATE OF KANSAS)
COUNTY OF MCPHERSON) SS

I, FRANCIS RANKIN, PROFESSIONAL ENGINEER OF THE STATE OF KANSAS DO HEREBY CERTIFY THAT UNDER MY SUPERVISION A SURVEY WAS MADE OF LOT 2, BLOCK 4, NORTH HIGH ADDITION TO THE CITY OF MCPHERSON, KANSAS, AND THAT THE ACCOMPANYING PLAT IS A TRUE EXHIBIT OF SAID SURVEY AS FAR AS IT IS KNOWN TO ME.

SURVEY CALLED FOR BY HARRIS LUMBER CO.

SIGNED THIS 9 DAY OF JUNE, 1970

Francis Rankin
FRANCIS RANKIN
PROFESSIONAL ENGINEER
MCPHERSON, KANSAS

