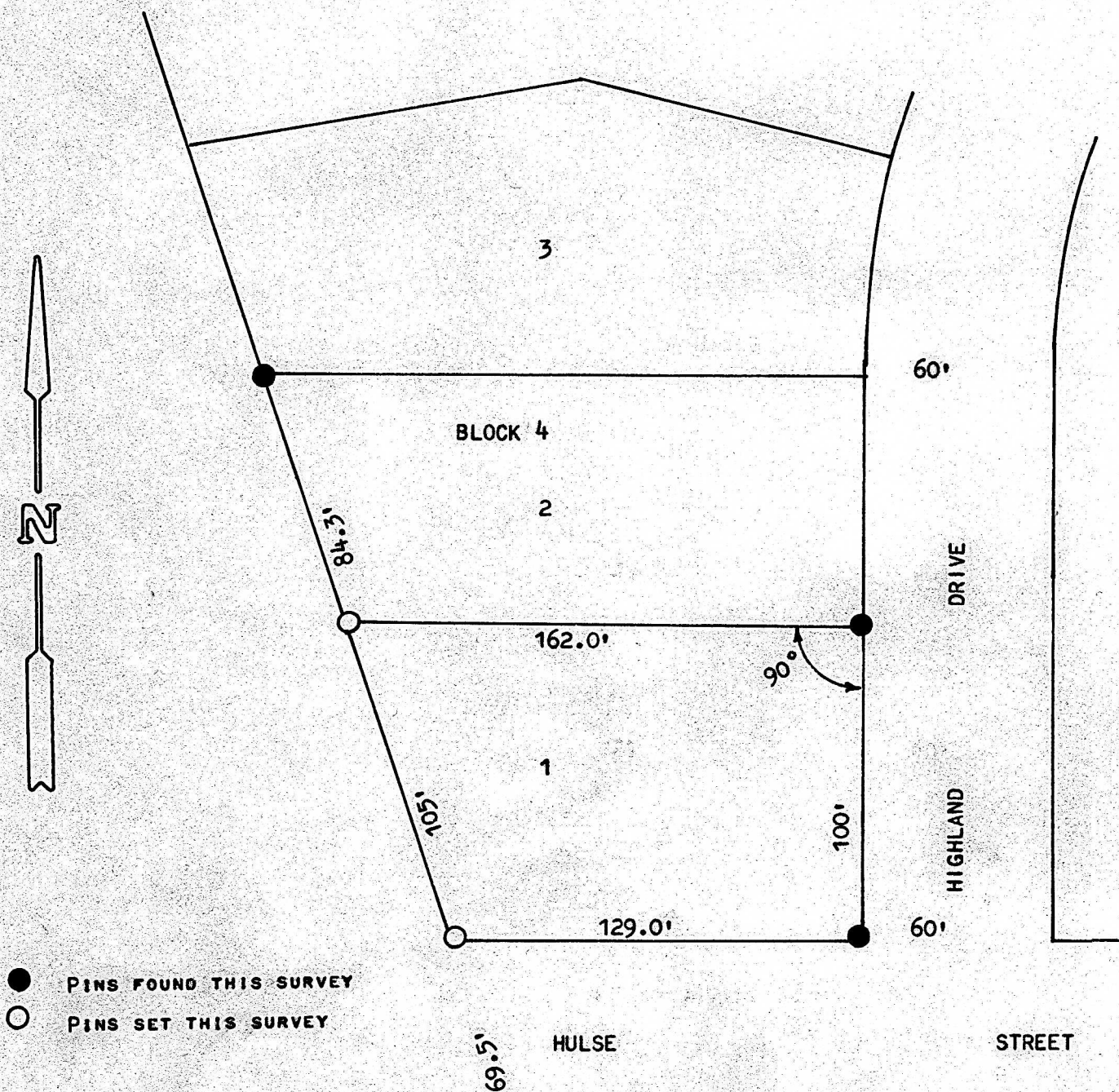


A SURVEY OF LOT 1, BLOCK 4,  
NORTH HIGH ADDITION,  
MCPHERSON, KANSAS



STATE OF KANSAS )  
COUNTY OF MCPHERSON ) SS

1" X 1" IN CONCRETE

I, MELVIN FERGUSON, COUNTY ENGINEER OF MCPHERSON COUNTY, KANSAS, DO HEREBY CERTIFY THAT UNDER MY SUPERVISION A SURVEY WAS MADE OF LOT 1, BLOCK 4, OF NORTH HIGH ADDITION TO THE CITY OF MCPHERSON, KANSAS, AND THAT THE ABOVE PLAT IS A TRUE EXHIBIT OF SAID SURVEY AS FAR AS IT IS KNOWN TO ME.

SURVEY CALLED FOR BY DON HOCH.

SIGNED THIS 26<sup>th</sup> DAY OF JULY, 1974.

*Melvin Ferguson*  
MELVIN FERGUSON  
COUNTY ENGINEER  
MCPHERSON COUNTY, KANSAS  
6772  
KANSAS  
PROFESSIONAL ENGINEER

MICROFILM