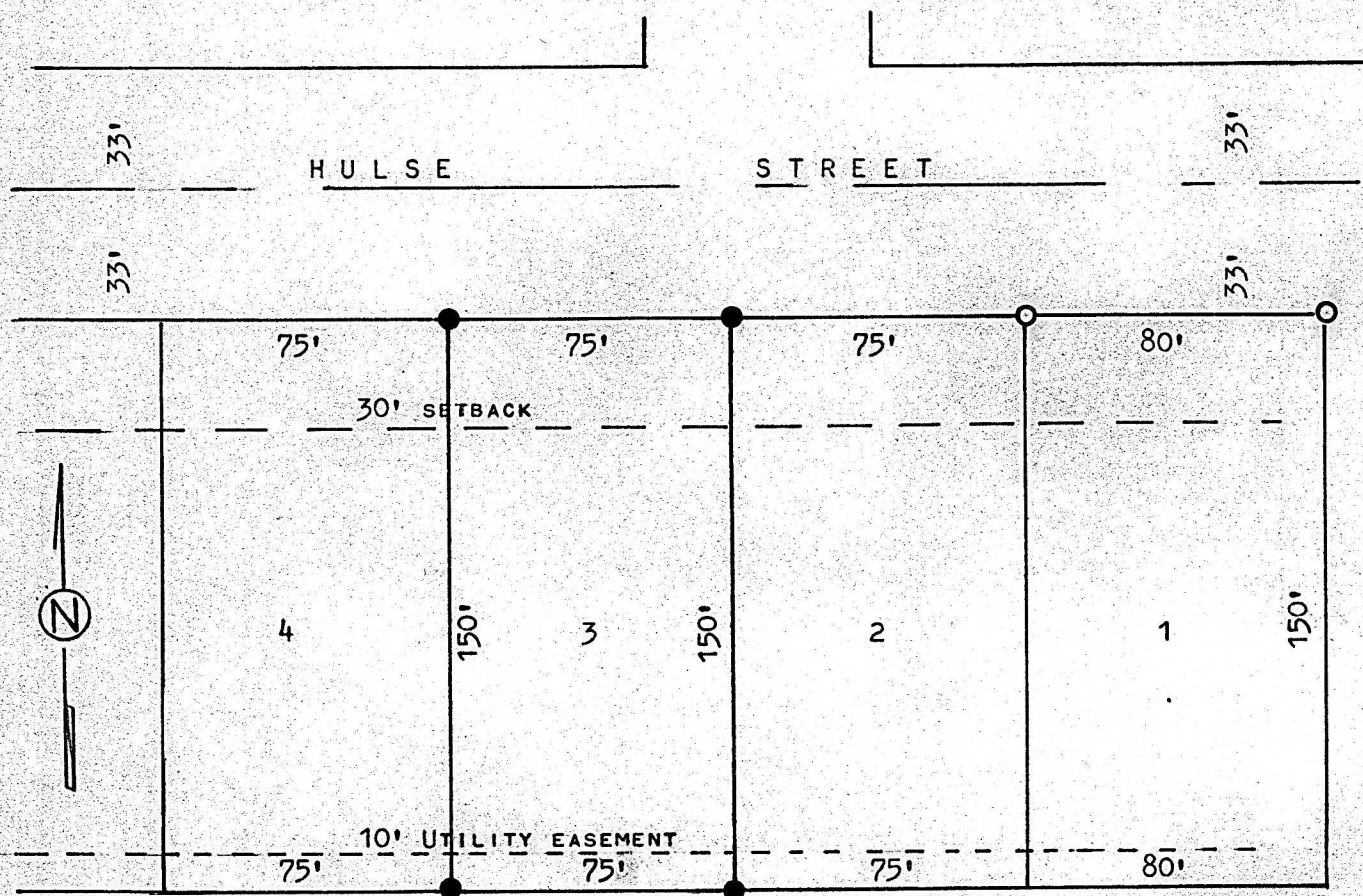


A SURVEY OF LOT 3, BLOCK 3, NORTH HIGH ADD.
MCPHERSON, KANSAS



● PINS FOUND OR SET THIS SURVEY

STATE OF KANSAS)
COUNTY OF MCPHERSON) SS

I, FRANCIS RANKIN, PROFESSIONAL ENGINEER OF THE STATE OF KANSAS
DO HEREBY CERTIFY THAT UNDER MY SUPERVISION A SURVEY WAS MADE OF
LOT 3, BLOCK 3, NORTH HIGH ADDITION, TO THE CITY OF MCPHERSON,
KANSAS, AND THAT THE ABOVE PLAT IS A TRUE EXHIBIT OF SAID SURVEY
AS FAR AS IT IS KNOWN TO ME.

SURVEY CALLED FOR BY DON HOCK

SIGNED ON THIS ³⁰~~30~~ DAY OF OCTOBER, 1973

Francis Rankin
FRANCIS RANKIN
PROFESSIONAL ENGINEER
MCPHERSON, KANSAS

