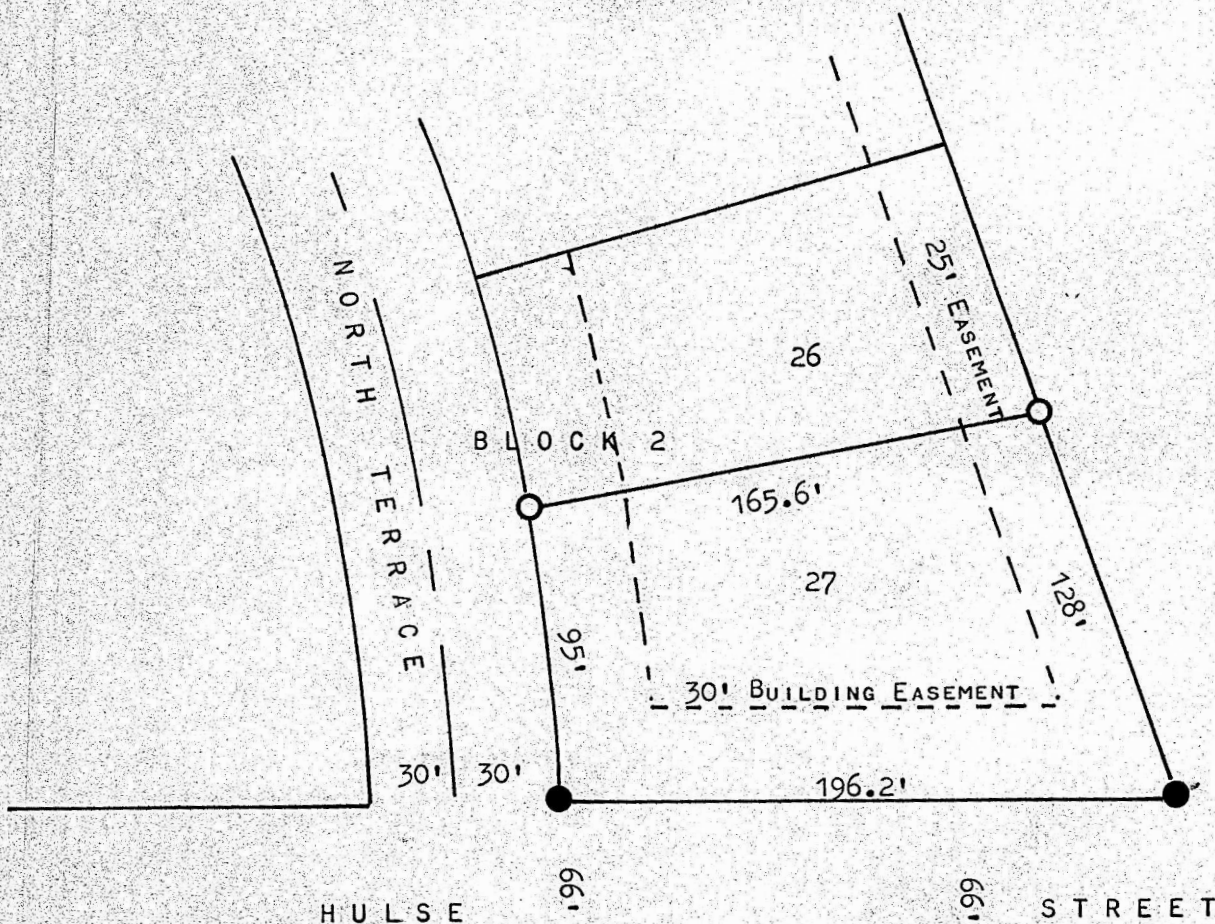
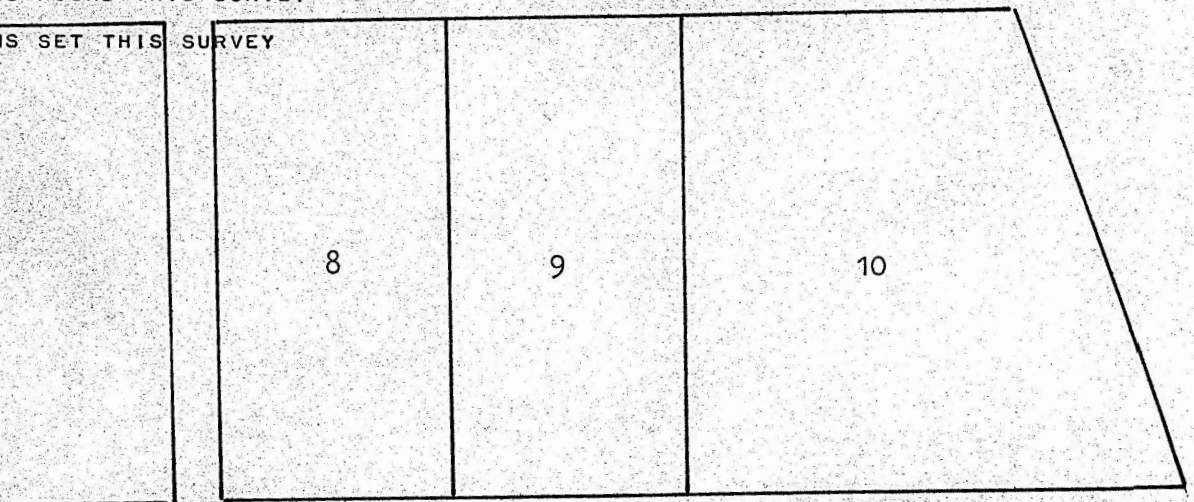


A SURVEY OF LOT 27, BLOCK 2, NORTH HIGH ADD.



● PINS FOUND THIS SURVEY

○ PINS SET THIS SURVEY



STATE OF KANSAS)
COUNTY OF MCPHERSON) SS

I, FRANCIS RANKIN, PROFESSIONAL ENGINEER OF THE STATE OF KANSAS DO HEREBY CERTIFY THAT UNDER MY SUPERVISION A SURVEY WAS MADE OF LOT 27, BLOCK 2, NORTH HIGH ADDITION, TO CITY OF MCPHERSON, KANSAS, AND THAT THE ABOVE PLAT IS A TRUE AND CORRECT PLAT SO FAR AS IT IS KNOWN TO ME.

SURVEY CALLED FOR BY HARRIS DELV.

SIGNED THIS 28 DAY OF OCTOBER, 1969

Francis Rankin
FRANCIS RANKIN
PROFESSIONAL ENGINEER
MCPHERSON, KANSAS



MICROFILM