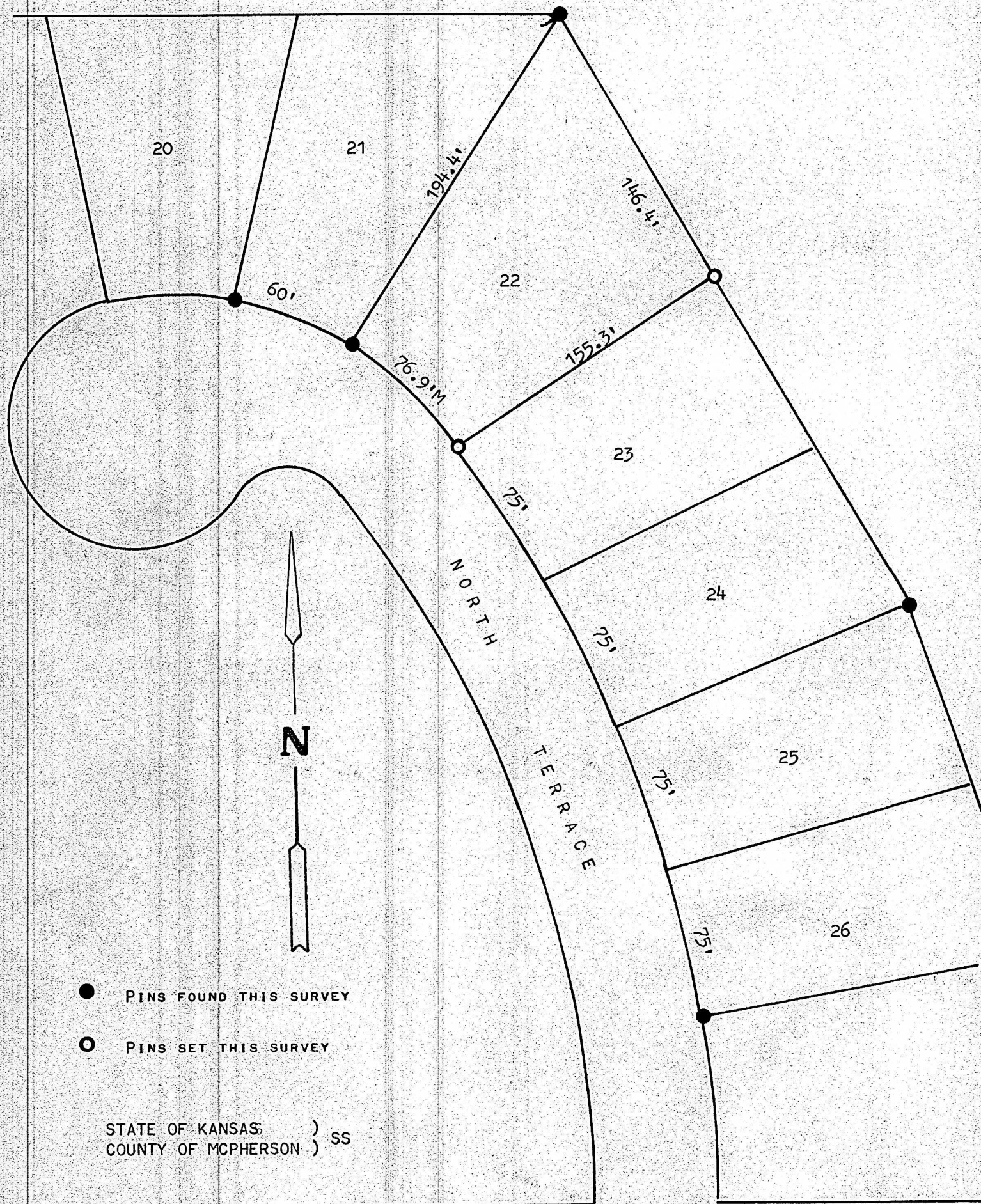


A SURVEY OF LOT 22, BLOCK 2, NORTH DIGH ADDITION
MCPHERSON, KANSAS



MICROFILM

I, FRANCIS RANKIN, PROFESSIONAL ENGINEER OF THE STATE OF KANSAS DO
HEREBY CERTIFY THAT UNDER MY SUPERVISION A SURVEY WAS MADE OF LOT 22,
BLOCK 2, NORTH HIGH ADDITION, TO THE CITY OF MCPHERSON, KANSAS, AND THAT
THE ABOVE PLAT IS A TRUE EXHIBIT OF SAID SURVEY AS FAR AS IT IS KNOWN TO ME.

SURVEY CALLED FOR BY BILL ADAMS.

SIGNED THIS 15, DAY OF JUNE, 1970

Francis Rankin
FRANCIS RANKIN
PROFESSIONAL ENGINEER
MCPHERSON, KANSAS

