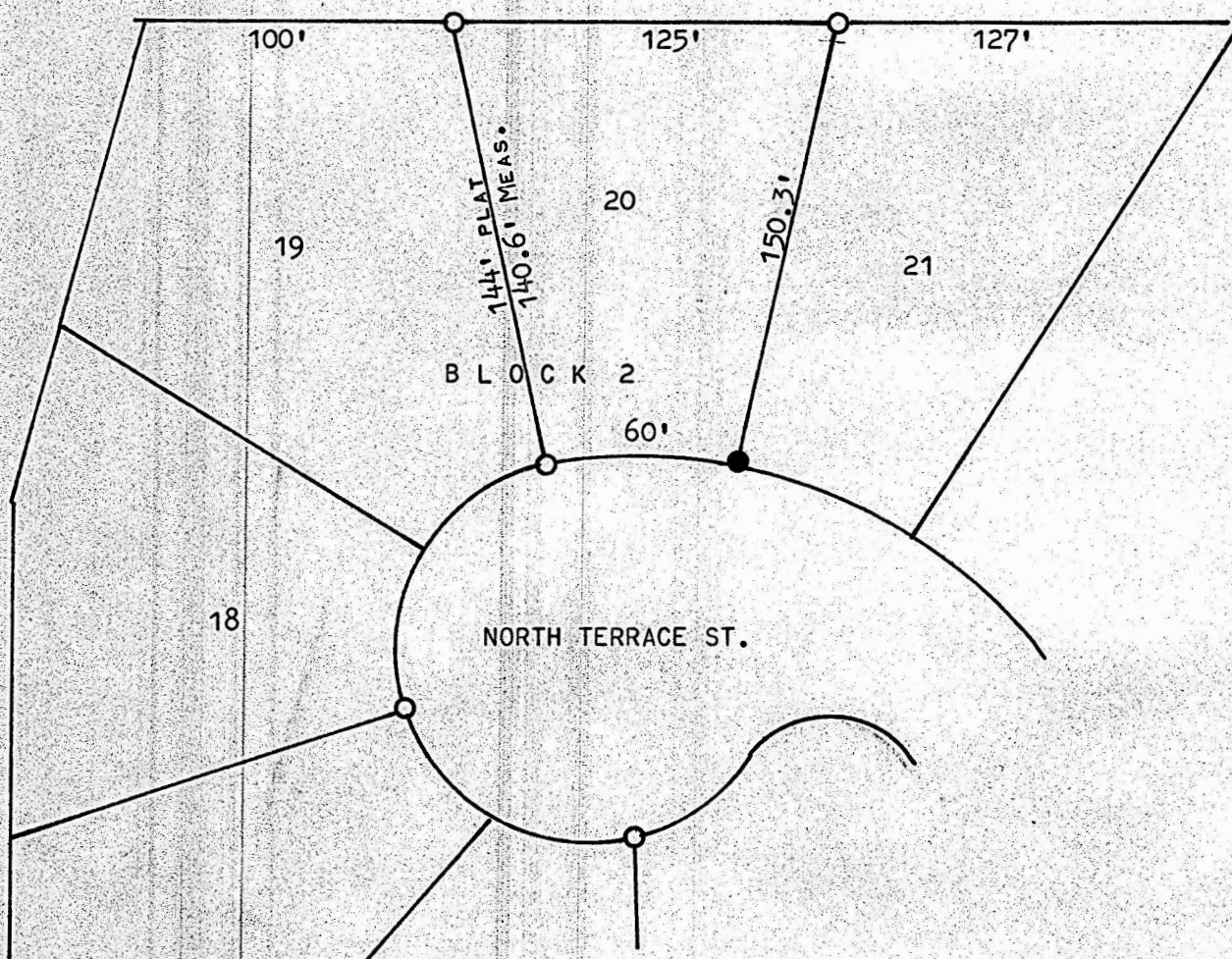


A SURVEY OF LOT 20, BLOCK 2, NOTH HIGH ADD.
MCPHERSON, KANSAS



- PINS FOUND THIS SURVEY
- PINS SET THIS SURVEY

STATE OF KANSAS)
COUNTY OF MCPHERSON) SS

I, FRANCIS RANKIN, PROFESSIONAL ENGINEER OF THE STATE OF KANSAS DO HEREBY CERTIFY THAT UNDER MY SUPERVISION A SURVEY WAS MADE OF LOT 20, BLOCK 2, NORTH HIGH ADDITION, TO THE CITY OF MCPHERSON, KANSAS, AND THAT THE ABOVE PLAT IS A TRUE AND CORRECT PLAT SO FAR AS IT IS KNOWN TO ME.

SURVEY CALLED FOR BY HARRIS DELV.

SIGNED THIS 5, DAY OF JANUARY, 1969

Francis Rankin
FRANCIS RANKIN
PROFESSIONAL ENGINEER
MCPHERSON, KANSAS

