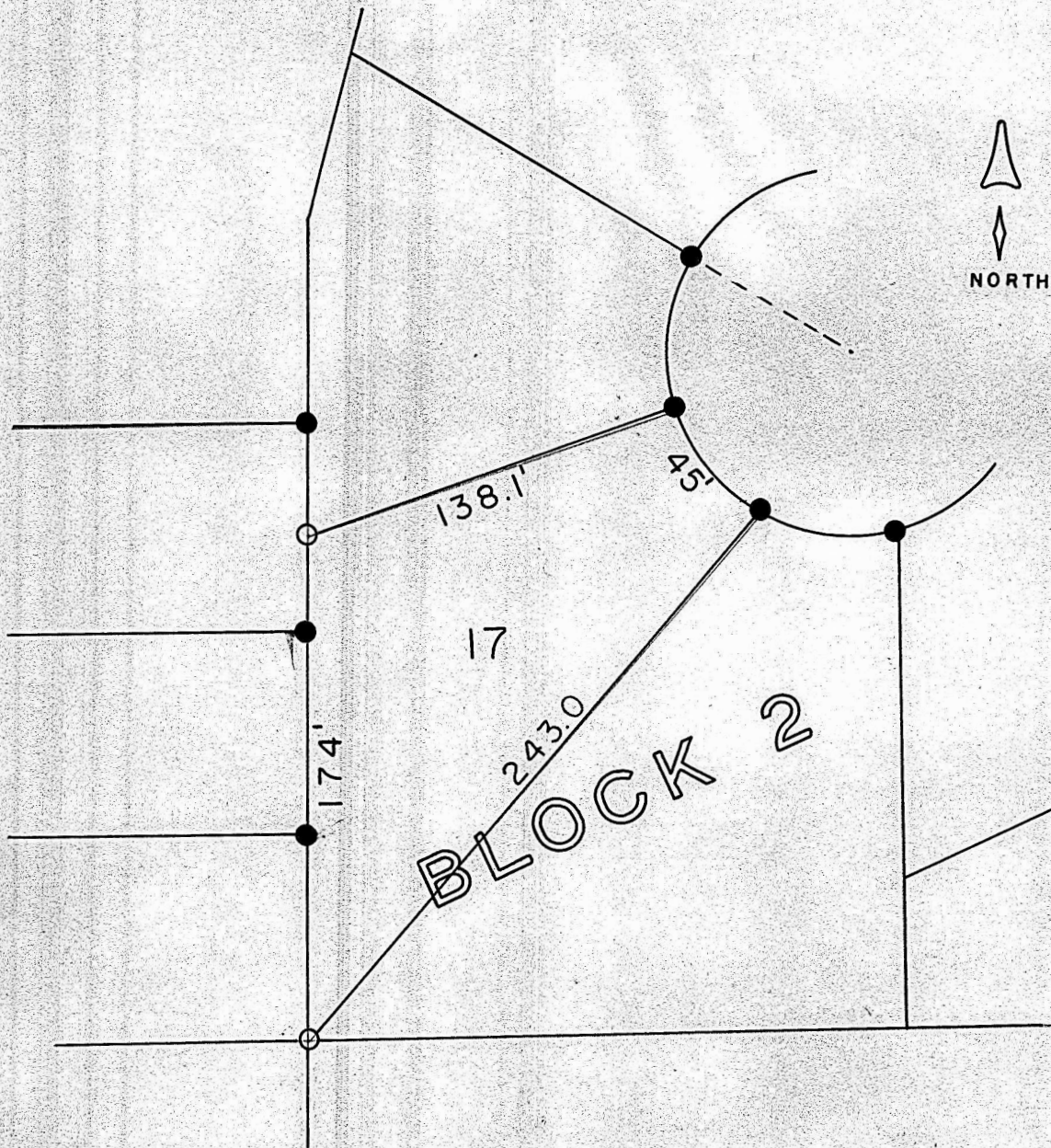


Survey of Lot 17, Block 2
North High Addition
McPherson, Kansas



- Pins Found this Survey
- Pins Set This Survey

State of Kansas)
County of McPherson) S.S.

I Francis Rankin, Do hereby certify that under my supervision a survey was made of Lot 17, Block 2 North High Addition to the City of McPherson, Kansas, and the above plat is a true exhibit of said survey as far as it is known to me.

Signed this 8 Day, July 1968

Survey called for by Harris Development Co.

Francis Rankin
Francis Rankin
Professional Engineer
McPherson, Kansas
799
KANSAS
PROFESSIONAL ENGINEER