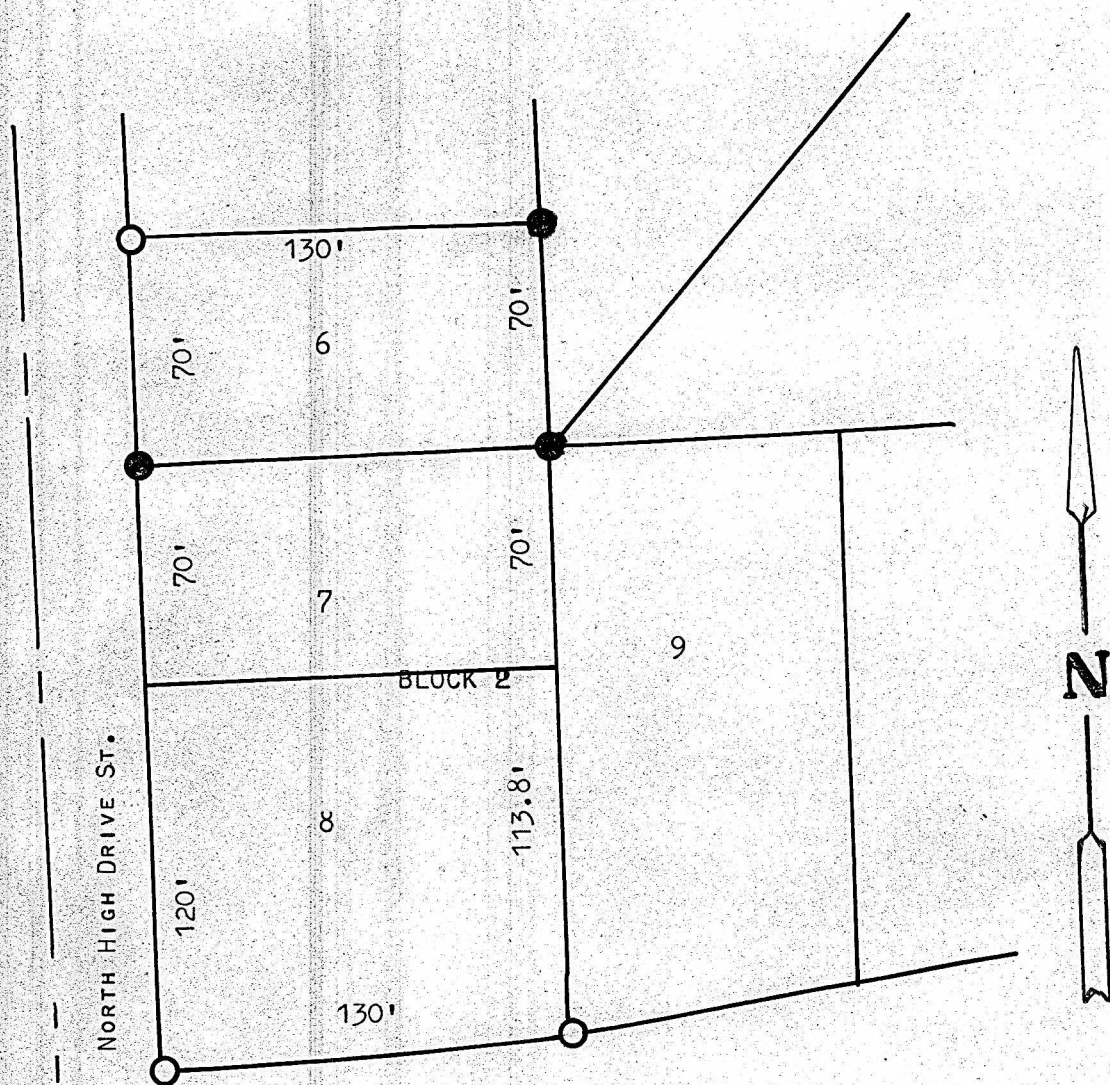


A SURVEY IN BLOCK 2, LOT 6
NORTH HIGH ADDITION
MCPHERSON, KANSAS



- PINS SET THIS SURVEY
- PINS FOUND THIS SURVEY

STATE OF KANSAS)
COUNTY OF MCPHERSON) SS

I, FRANCIS RANKIN LICENSED PROFESSIONAL ENGINEER OF THE STATE OF KANSAS, HEREBY CERTIFY THAT A SURVEY WAS MADE UNDER MY SUPERVISION OF LOT 6, BLOCK 2, NORTH HIGH ADDITION TO THE CITY OF MCPHERSON, KANSAS, AND THAT THE ABOVE PLAT IS A TRUE AND CORRECT SO FAR AS IT IS KNOWN TO ME.

SURVEY CALLED FOR BY HAROLD A. SIGLE

SIGNED THIS DAY OF JANUARY, 23, 1967

Francis Rankin
FRANCIS RANKIN
PROFESSIONAL ENGINEER
MCPHERSON, KANSAS



MICROFILM