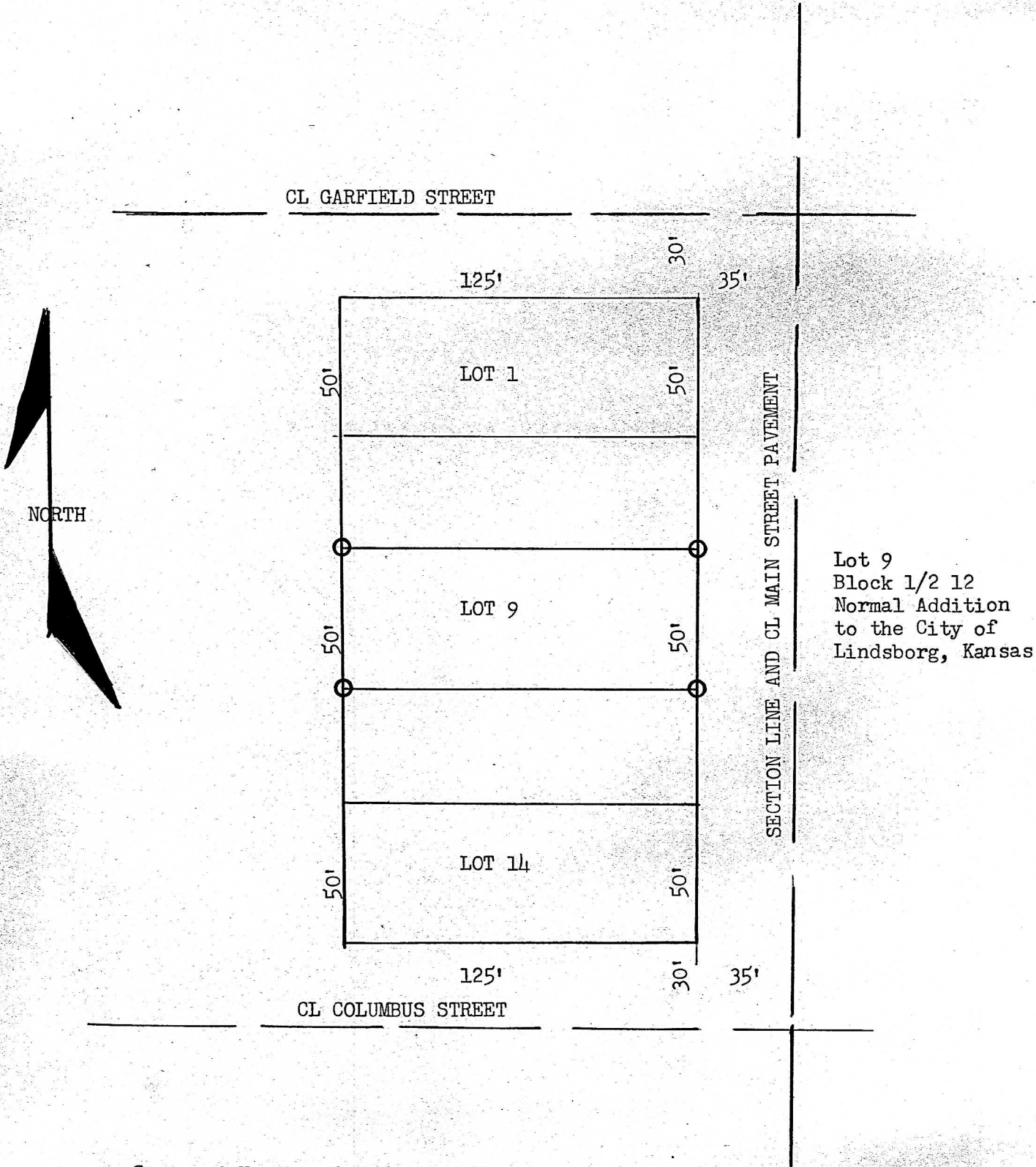


(Copy)

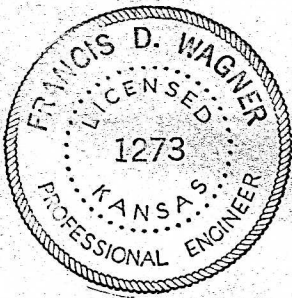
August 14, 1950



State of Kansas, County of McPherson, ss

I, Francis D. Wagner, County Engineer of McPherson County, Kansas, do hereby certify that I did on the 14th day of August, 1950, survey and stake the corners of Lot 9, Block 1/2 12, Normal Addition to the City of Lindsborg, and that the accompanying Plat is a true exhibit of said survey.

FRANCIS D. WAGNER
County Engineer



MICROFILM