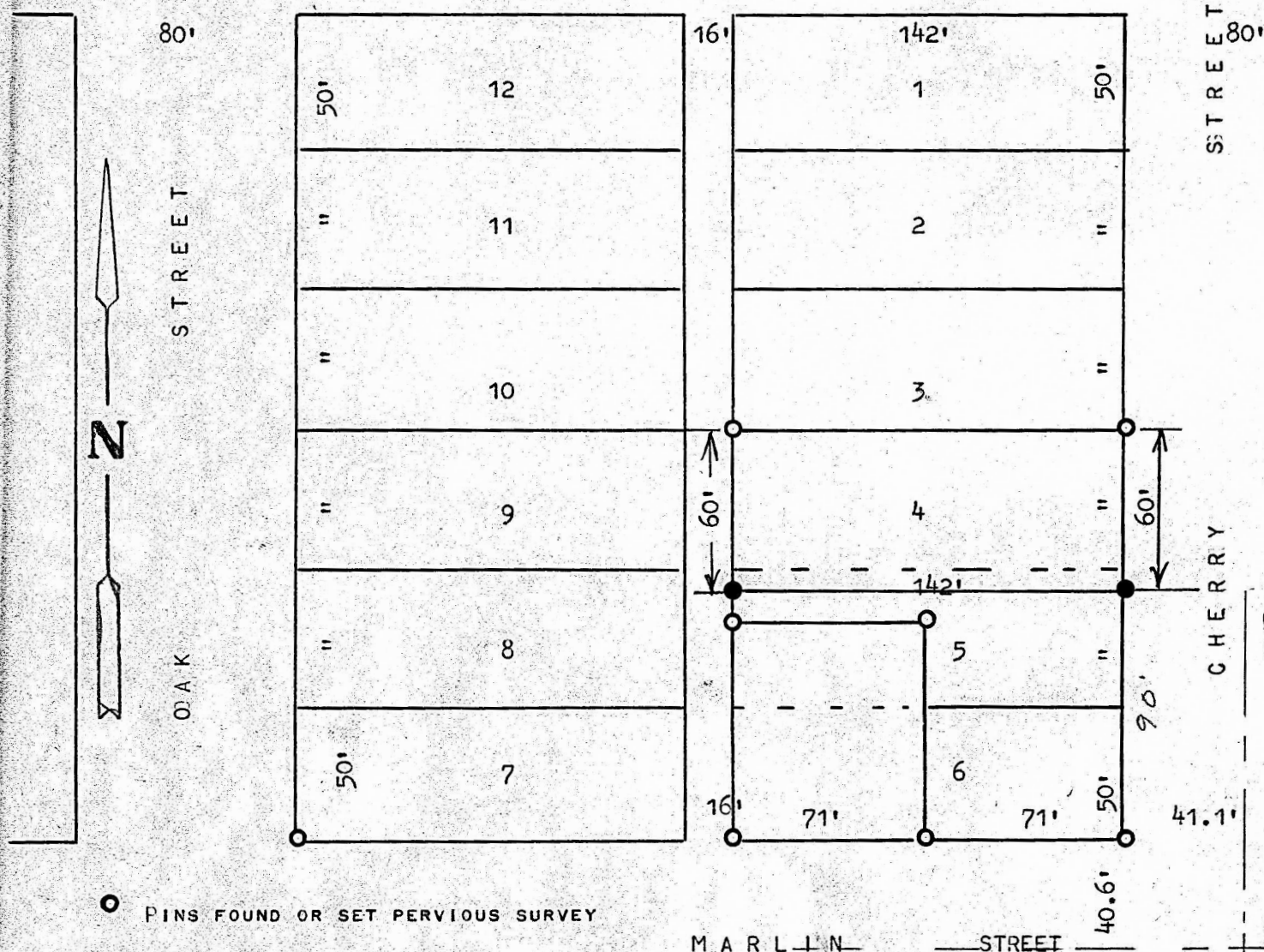


A SURVEY OF LOT 4 AND THE NORTH 10' OF LOT 5,  
BLOCK 51, MILLER ADDITION, MCPHERSON, KANSAS:

80' EUCLID ST.



150  
150  
90

STATE OF KANSAS )  
COUNTY OF MCPHERSON ) SS

I, FRANCIS RANKIN PROFESSIONAL ENGINEER OF THE STATE OF KANSAS DO  
HEREBY CERTIFY THAT UNDER MY SUPERVISION A SURVEY WAS MADE OF  
LOT 4 AND THE NORTH 10 FEET OF LOT 5, BLOCK 51 MILLERS FIRST ADD.  
TO THE CITY OF MCPHERSON, KANSAS, AND THAT THE ABOVE PLAT IS TRUE  
EXHIBIT OF SAID SURVEY AS FAR AS IT IS KNOWN TO ME.

SURVEY CALLED FOR BY CLAYTON SKINNER

SIGNED THIS 4 DAY OF

FRANCIS RANKIN  
PROFESSIONAL ENGINEER  
MCPHERSON, KANSAS

