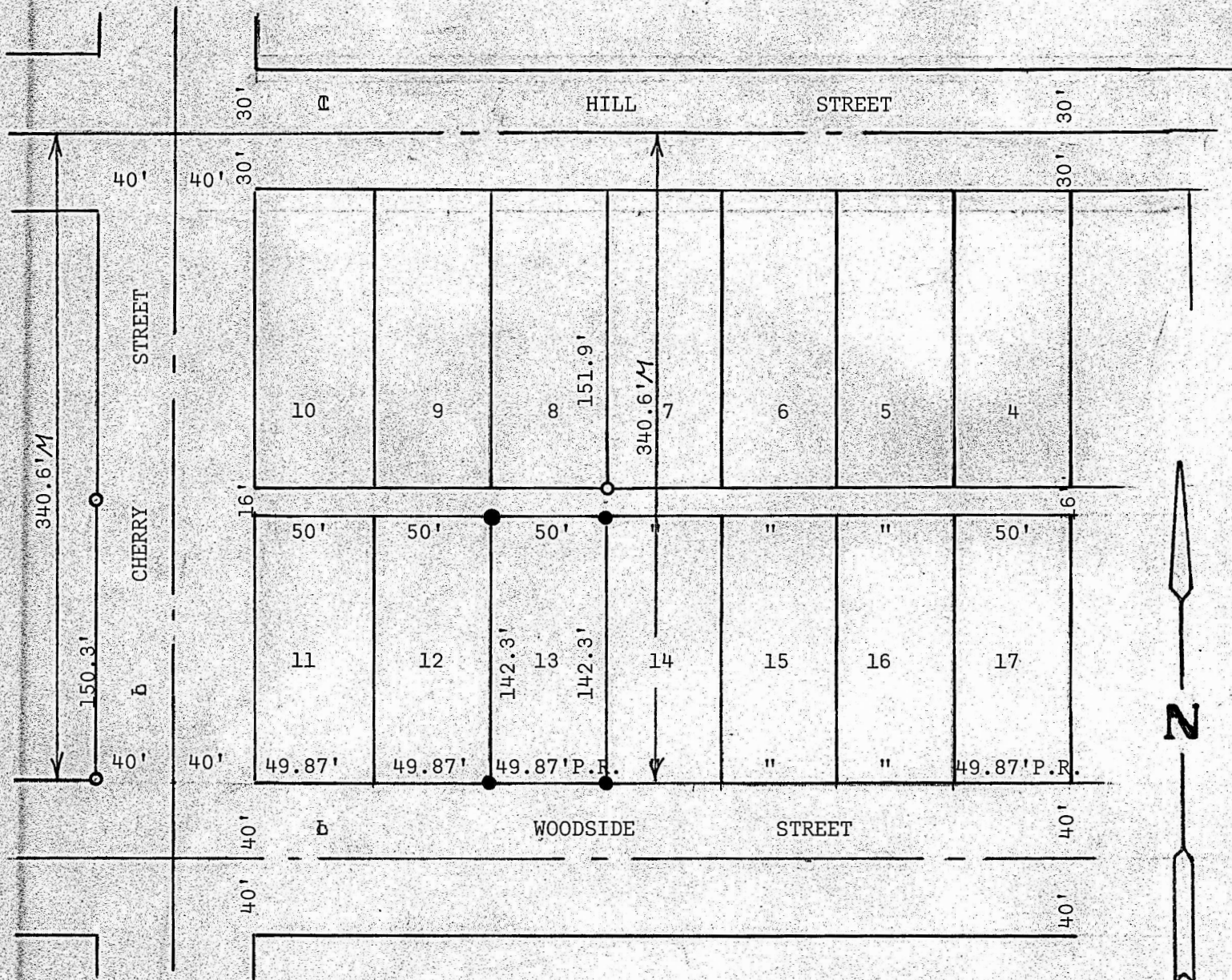


A SURVEY OF LOT 13, BLOCK 9,  
MILLER ADDITION, NO. 2  
TO THE CITY OF MC PHERSON, KANSAS



- Pins Found This Survey
- Pins Set This Survey

STATE OF KANSAS )  
COUNTY OF MC PHERSON) SS

I, Melvin Ferguson, County Engineer of McPherson County, Kansas, do hereby certify that under my supervision a survey was made of Lot 13, Block 9, Millers Addition Number 2 to the City of McPherson Kansas. The accompanying plat is a true exhibit of said survey as far as it is known to me.

Survey called for by William H. Parsons

Signed this 16<sup>th</sup> day of July, 1974

Melvin Ferguson  
Melvin Ferguson  
County Engineer  
McPherson County, Kansas

6772  
KANSAS  
PROFESSIONAL ENGINEER