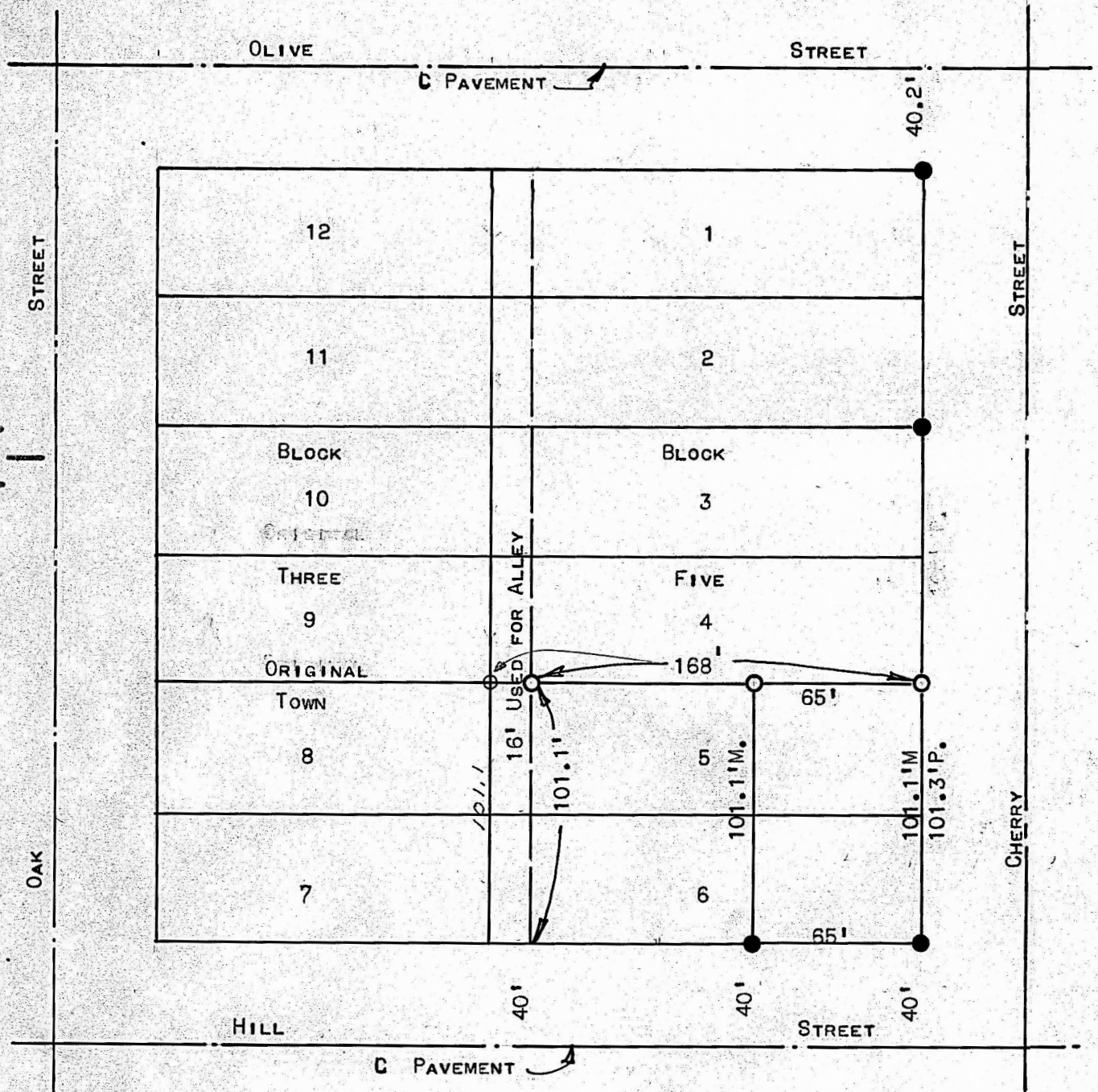


A SURVEY OF THE NORTH LINE OF  
LOT 5 BLOCK 5 MILLERS  
ADDITION #2

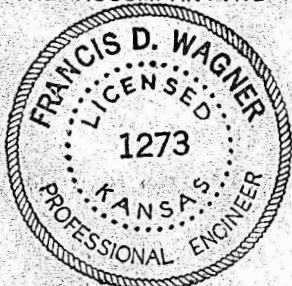


○ PINS PLACED ON SURVEY

● PINS FOUND ON SURVEY

STATE OF KANSAS ) SS  
COUNTY OF McPHERSON)

I, FRANCIS D. WAGNER COUNTY ENGINEER OF McPHERSON COUNTY, KANSAS, DO HEREBY CERTIFY THAT I DID ON THE 9TH DAY OF JULY, 1957, A SURVEY TO ESTABLISH THE NORTH LINE OF LOT 5 BLOCK 5 MILLER'S ADDITION #2 TO THE CITY OF McPHERSON, KANSAS, AND THAT THE ACCOMPANYING PLAT IS A TRUE EXHIBIT OF SAID SURVEY.



12 JULY, 1957  
REVISED  
3-74

*Francis D. Wagner*  
FRANCIS D. WAGNER  
COUNTY ENGINEER  
McPHERSON COUNTY

MICROFILM