

30
H. A. ROWLAND § Kansas Licensed Civil Engineer

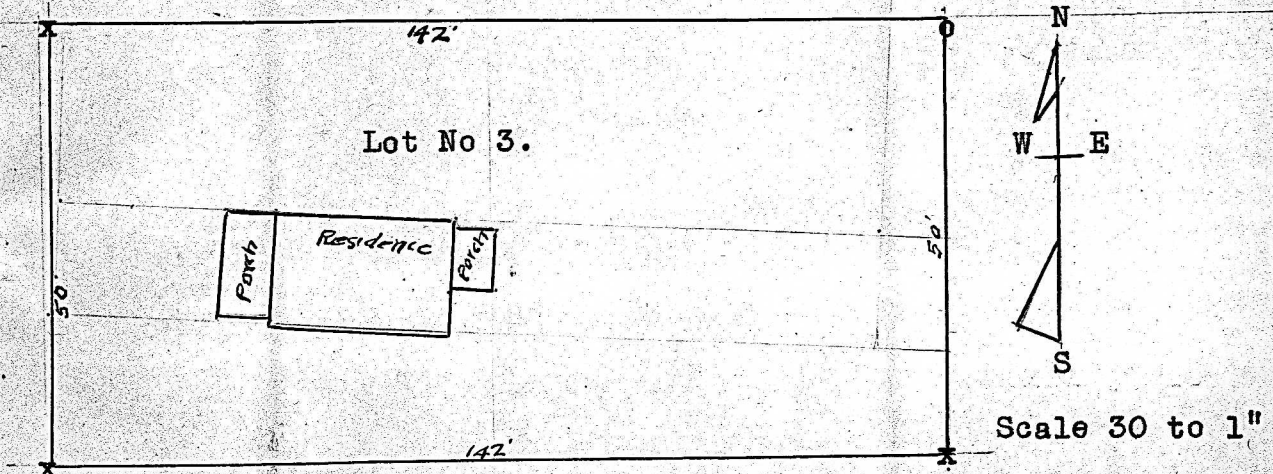
Member:

National Society Professional Engineers
Kansas Society Professional Engineers
Kansas Engineering Society

PHONE 796X

McPHERSON, KANSAS
June 7th 1947.

Mr. Claude L. Barber,
McPherson, Kas.



State of Kansas,
McPherson County, ss.,

This is to certify. that the above plat of lot 3 in Matthews Addition was surveyed by me and corners set as designated. x denotes a piece of gas pipe marks the corner. Where o is placed the corner is in a concrete paved drive way.

Signed: - H. A. Rowland
Reg. Civil Engineer.
McPherson, Kas.

MICROFILM