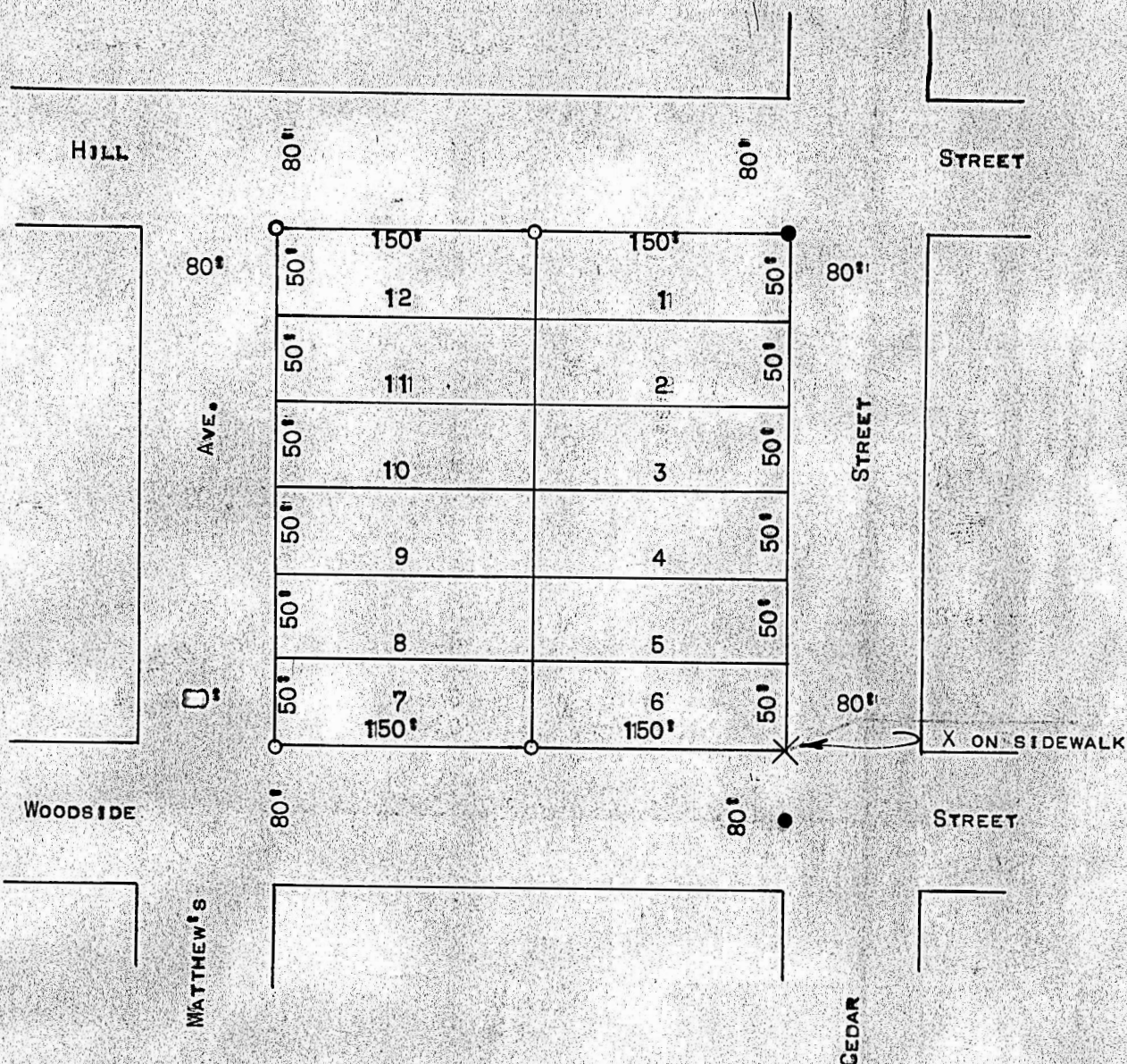
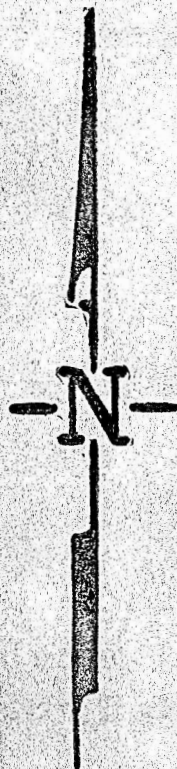


AN SURVEY OF THE WEST HALF OF BLOCK ONE MATTHEW'S SUB. OF BLOCK SIX



○ PINS SET ON THIS SURVEY

● PINS FROM PREVIOUS SURVEY

STATE OF KANSAS
COUNTY OF MCPHERSON, SS

I, FRANCIS D. WAGNER, COUNTY ENGINEER, MCPHERSON COUNTY, DO HEREBY CERTIFY I DID CAUSE TO BE DONE ON THE 1 ST. OF JUNE 56, A SURVEY OF THE HALF OF BLOCK ONE MATTHEW'S SUB. OF BLOCK SIX BREWER'S SUBDIVISION, TO THE CITY OF MCPHERSON, KANSAS, AND THAT THE ACCOMPANYING PLAT IS A TRUE EXHIBIT OF SAID SURVEY.

Francis D. Wagner

FRANCIS D. WAGNER
COUNTY ENGINEER
MCPHERSON COUNTY

3 JUNE : 56

MICROFILM

CIS D. WA