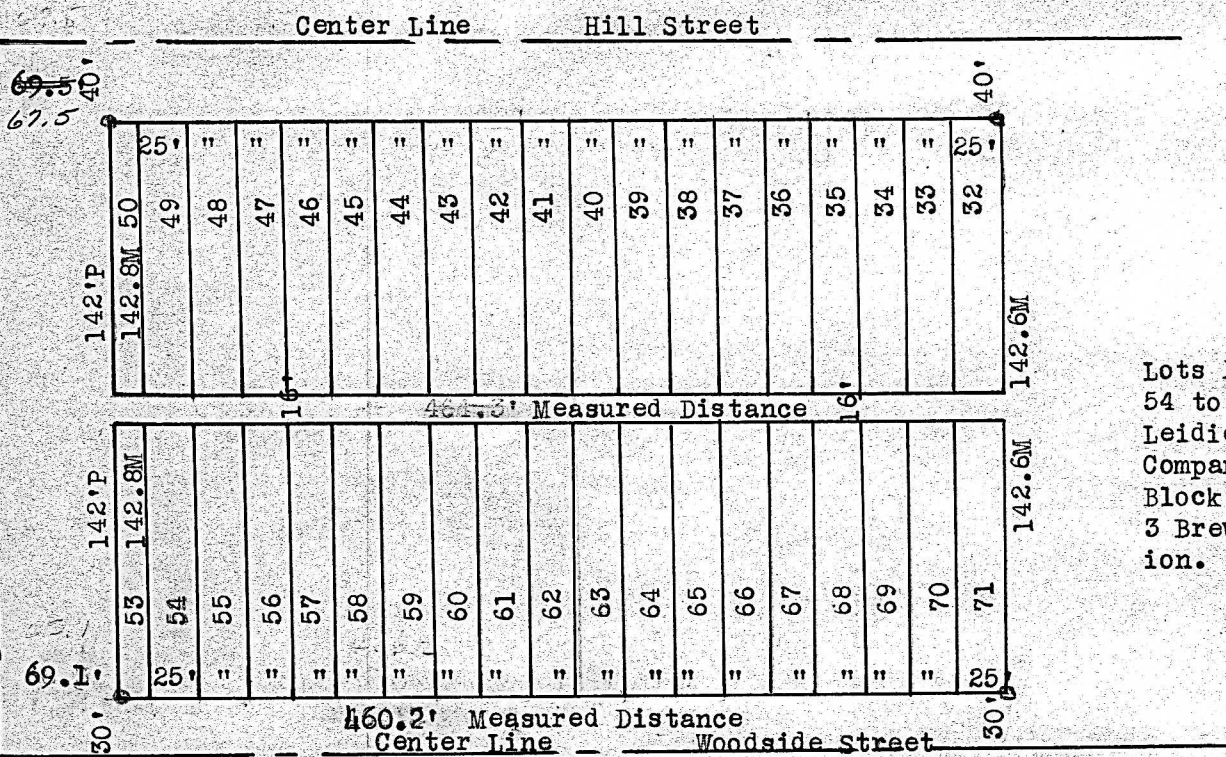


Center line of Pavement U.S. 81 By-Pass 7618' to Section

March 31, 1953



Lots East 1/2 53, All 54 to 71 Inclusive, Leidich, Tylers and Companies Subdivision Block 1 of Lot 2 and 3 Brewer's Subdivision.

State of Kansas, County of McPherson, ss

I, Francis D. Wagner, County Engineer of McPherson County, Kansas, do hereby certify that I did on the 23rd day of March, 1953, cause to be done a survey that determined the N.W. corner and the S.W. corner of the East 1/2 of Lot 53 and the S.E. corner and the N.E. corner of Lot 71, Block One of Leidich, Tylers and Company's Subdivision of Lots Two and Three Brewer's Subdivision to the City of McPherson and that the accompanying plat is a true exhibit of said survey.

FRANCIS D. WAGNER
County Engineer
McPherson County

DISPROFIEL 7