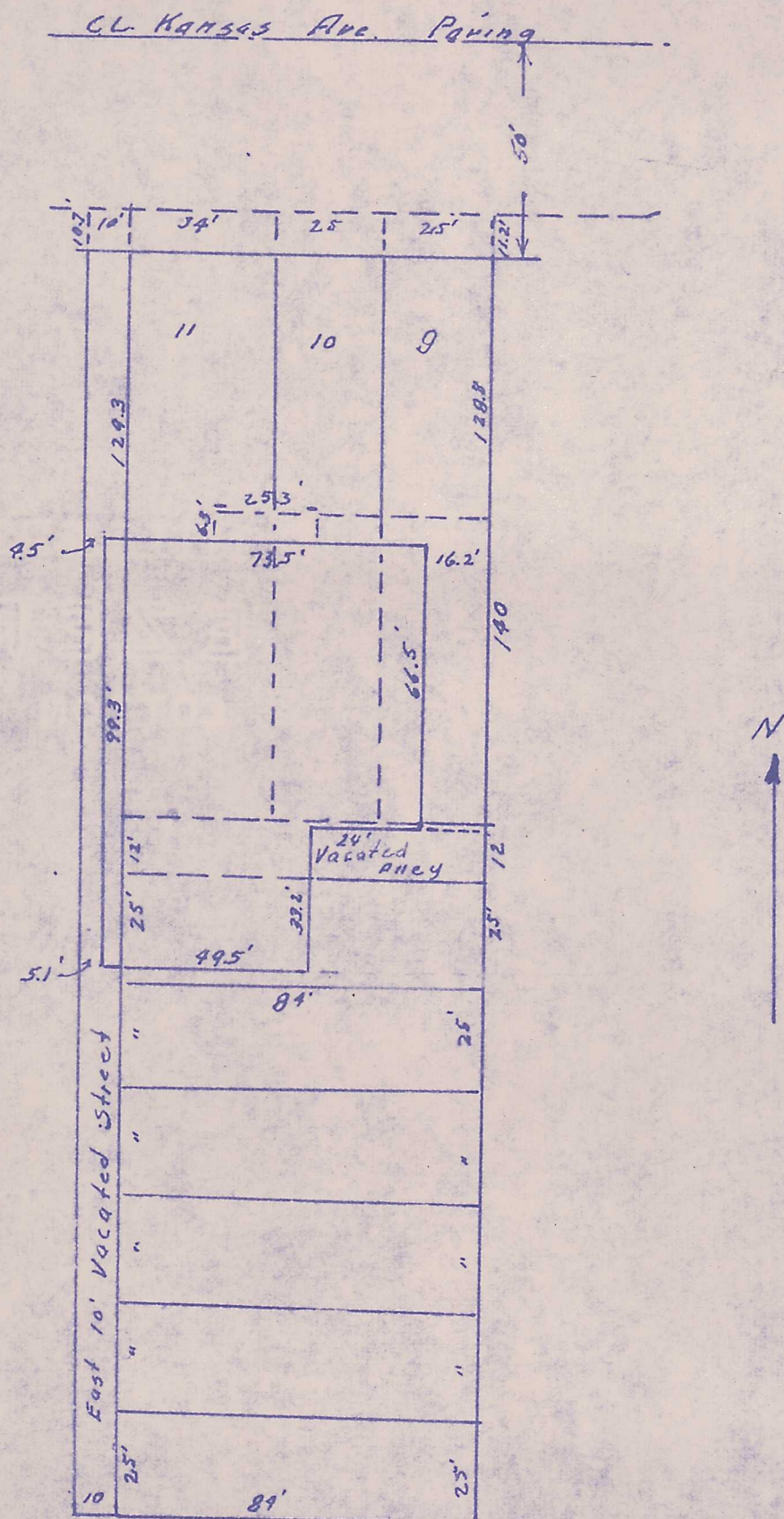


Part of Block 2, Irvin and Lloyd's Addition, McPherson, Kansas.



State of Kansas, County of McPherson, SS.

I, G.D. Johnson, Licensed Civil Engineer in the State of Kansas, do hereby certify that I did on the 17th. day of March, 1962 survey the following property.

Lots 9, 10, 11, except that part of said lots off the north side thereof condemned for Highway; the west 84 feet of Lots 12, 13, 14, 15, 16 and 17 all in Block 2, Irvin and Lloyd's Addition to McPherson, Kansas and part of SW  $\frac{1}{4}$  29-19-3 beginning at SW. Cor of Lot 17 of said Block 2, thence west 10 feet, north to south line of Highway K-56, thence East 10 feet, thence south along west line of Block 2 to the place of beginning.

I also certify that accompanying plat is a true exhibit of said survey.

MICROFILM

*G.D. Johnson*  
G.D. Johnson, Engr.

