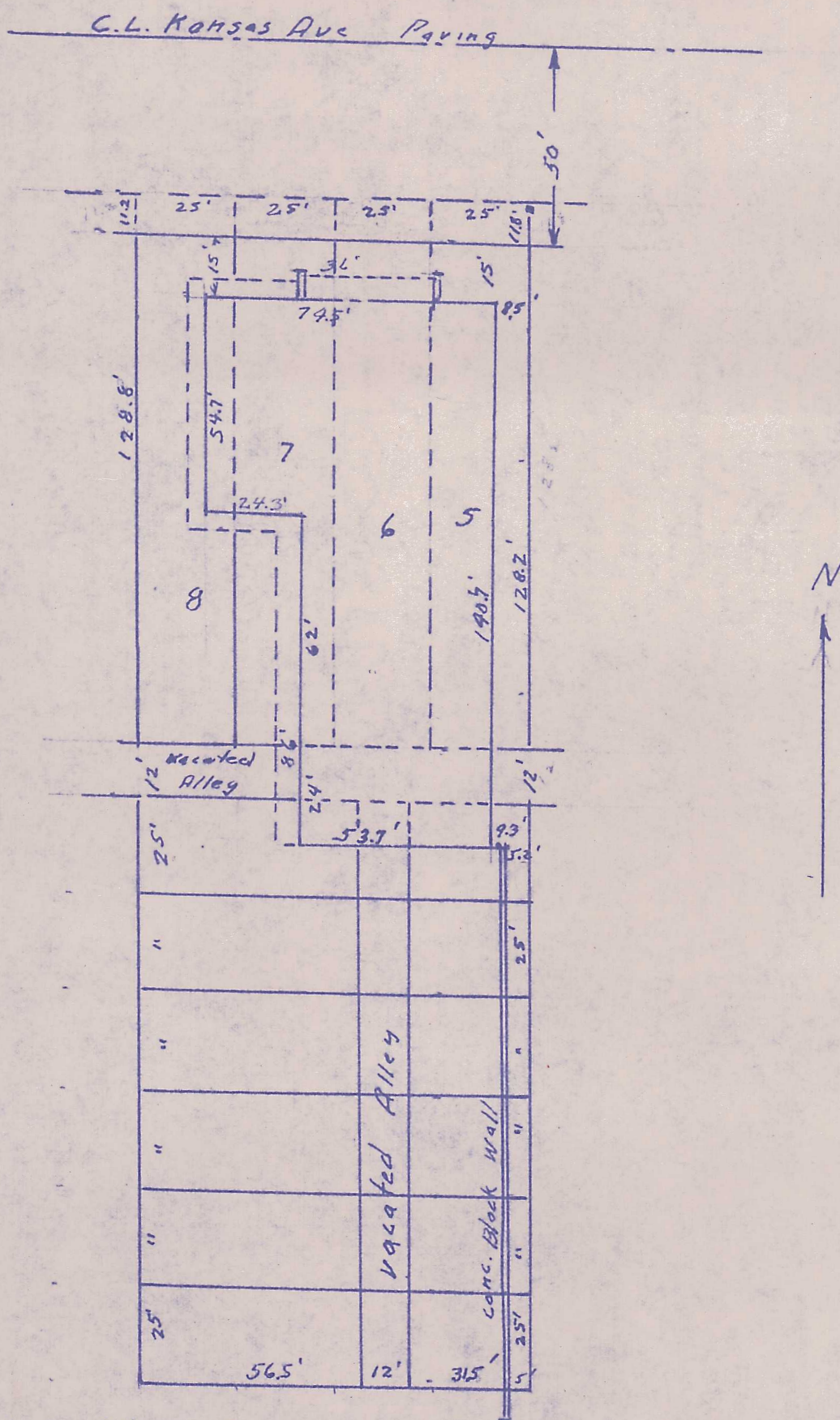


Part of Block 2, Irvin and Lloyd's Addition, McPherson, Kansas.



State of Kansas, County of McPherson, SS.

I, G.D. Johnson, Licensed Civil Engineer in the State of Kansas do hereby certify that I did on the 17th. day of March, 1962 survey and determine location of improvements on Lots 5, 6, 7, & 8 except that part of said lots off the north side thereof condemned for Highway; the east 56.5 feet of Lots 12, 13, 14, 15, 16 & 17, and the west 31.5 feet of Lots 26, 27, 28, 29, 30, & 31, all in Block 2, Irvin and Lloyd's Addition to McPherson and all that part of North and South alley in said Block 2 lying between lots 12 to 17 incl. and Lots 26 to 31 incl. now vacated.

I also certify that accompanying plat is a true exhibit of said survey.

*G. D. Johnson*  
G. D. Johnson, Engr.

MICROFILM