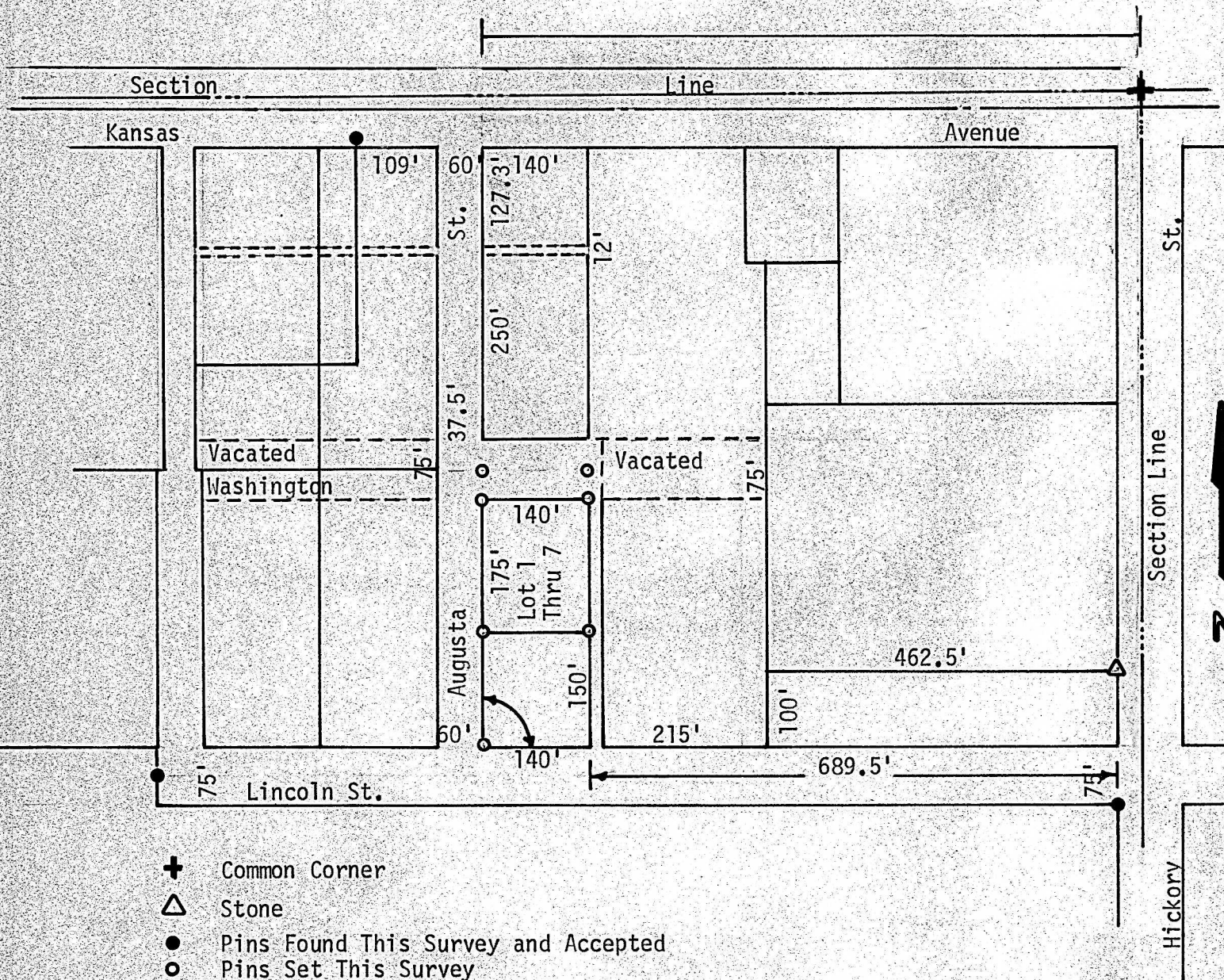


SURVEY OF LOT 1, THRU 7, BLOCK 12,
IRVIN & LLOYDS ADDITION
MC PHERSON, KANSAS



I, F. R. Rankin, County Engineer of McPherson County, Kansas, do hereby certify that under my supervision a survey was made of Lot 1 thru 7, Block 12 of Irvin & Lloyds Addition to the City of McPherson, Kansas. The above plat is a true exhibit of said survey as far as it is known to me.

Survey Requested by Rex Kendall

Signed this 24 day of April, 1972

F. R. Rankin
F. R. Rankin, P. E.
County Engineer
McPherson County, Kansas

