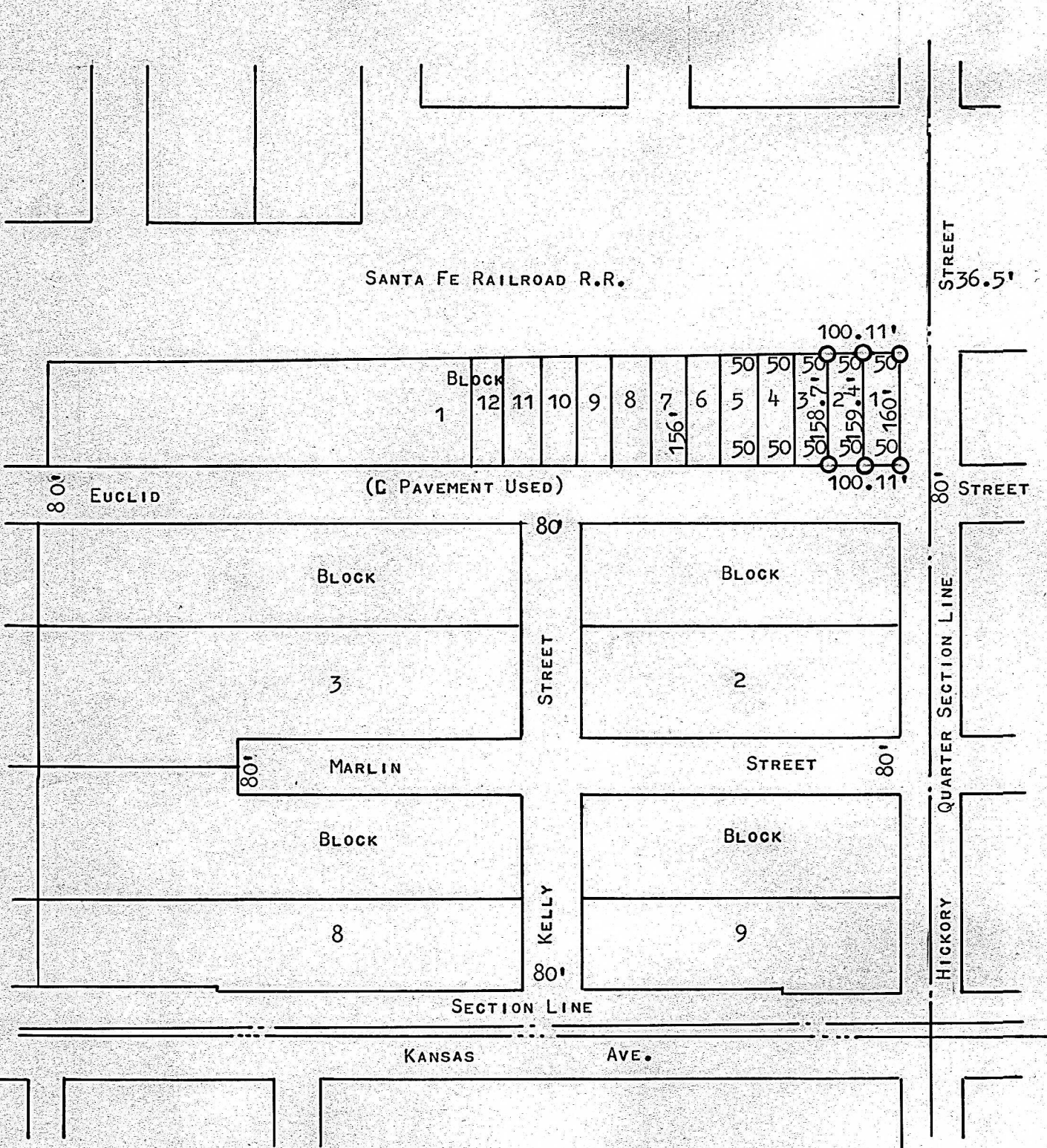


A SURVEY OF LOTS 1 & 2 BLOCK 1
INTERSTATE ADDITION
TO THE CITY OF MCPHERSON,
KANSAS



○ PINS PLACED THIS SURVEY

STATE OF KANSAS)
COUNTY OF MCPHERSON) SS

I, FRANCIS D. WAGNER, COUNTY ENGINEER OF MCPHERSON COUNTY DO HEREBY
CERTIFY THAT I DID CAUSE TO BE DONE ON THE 23RD DAY OF FEBRUARY, 1959
A SURVEY OF LOTS 1 AND 2 OF INTERSTATE ADDITION TO THE CITY OF MCPHERSON
AND THAT THE ACCOMPANYING PLAT IS A TRUE EXHIBIT OF SAID SURVEY.

Francis D. Wagner

MICROFILM

FRANCIS D. WAGNER
COUNTY ENGINEER
MCPHERSON, COUNTY

NOTE: TO CONFORM WITH A SURVEY COMPLETED ON THE 29TH DAY OF MAY, 1953,
BY G.D. JOHNSON THE PRORATED FOOTAGE USED ON SAID SURVEY WAS USED ON
THIS SURVEY.