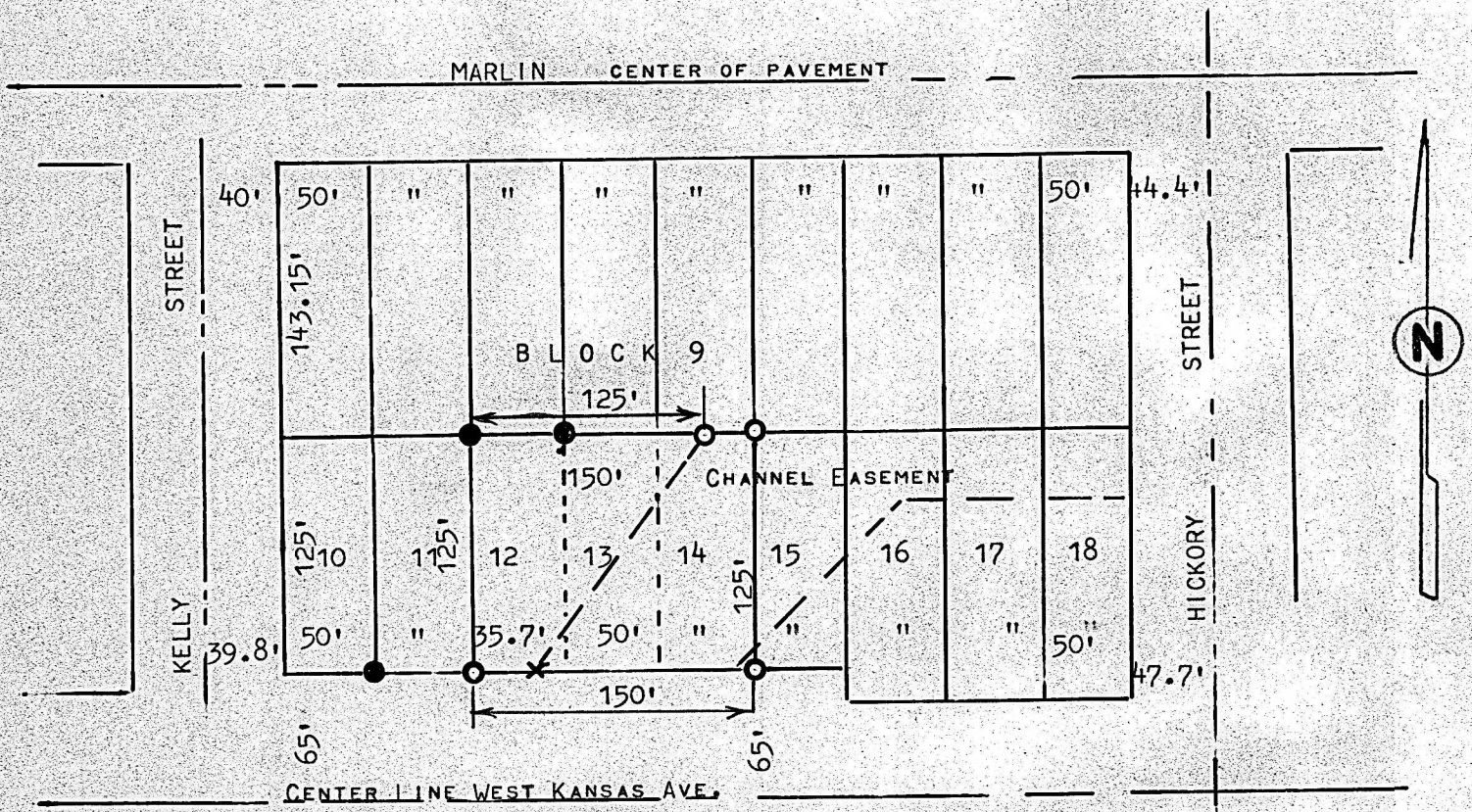


A SURVEY OF LOTS 12, 13 AND 14, BLOCK 9
INTERSTATE ADDITION, MCPHERSON, KANSAS



- PINS FOUND THIS SURVEY
- PINS SET THIS SURVEY

STATE OF KANSAS)
COUNTY OF MCPHERSON) SS

I, MELVIN FERGUSON, PROFESSIONAL ENGINEER OF THE STATE OF KANSAS DO HEREBY CERTIFY THAT UNDER MY SUPERVISION A SURVEY WAS MADE OF LOTS 12, 13 AND 14, BLOCK 9, INTERSTATE ADDITION, TO THE CITY OF MCPHERSON, KANSAS AND THAT THE ABOVE PLAT IS A TRUE EXHIBIT OF SAID SURVEY AS FAR AS IT IS KNOWN TO ME.

SURVEY CALLED FOR BY R.K. MILLER

SIGNED THIS 30th DAY OF AUGUST, 1978

Melvin Ferguson
MELVIN FERGUSON
PROFESSIONAL ENGINEER
MCPHERSON, KANSAS

