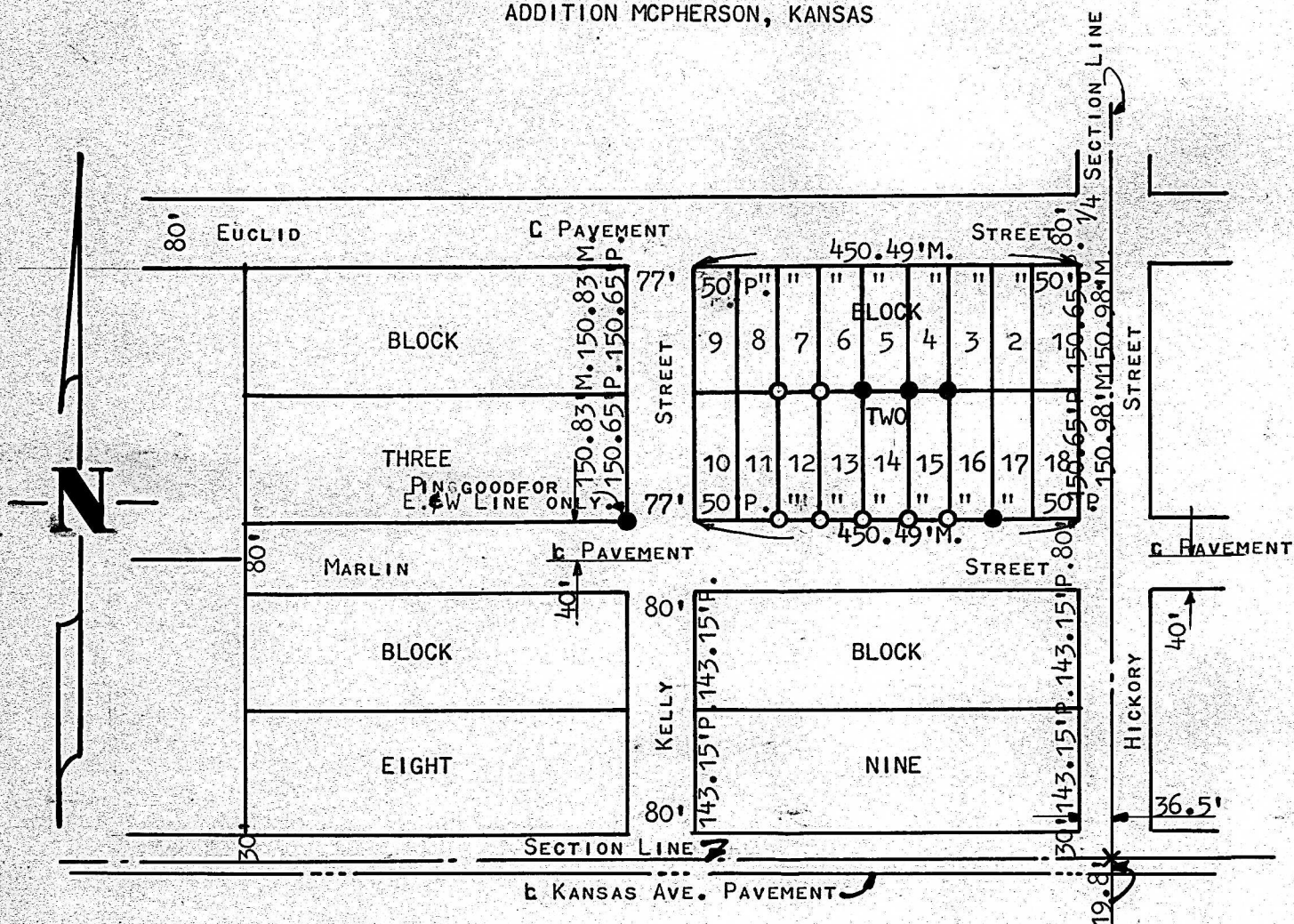


A SURVEY OF LOTS 12, 13, & 15
BLOCK TWO INTERSTATE
ADDITION MCPHERSON, KANSAS



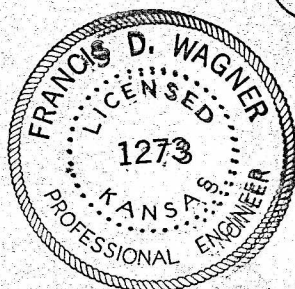
- PINS FOUND THIS SURVEY
- PINS PLACED THIS SURVEY

PRORATION - 0.1091 PER 100' FT. OF LOTS
FRONTAGE EAST & WEST.

I, FRANCIS D. WAGNER, COUNTY ENGINEER OF McPHERSON COUNTY, KANSAS DO
HEREBY CERTIFY THAT I DID CAUSE TO BE DONE ON THE 29TH DAY OF JANUARY,
1960 A SURVEY OF LOTS 12 - 13 AND 15 BLOCK TWO INTERSTATE ADDITION
TO THE CITY OF McPHERSON, KANSAS, AND THAT THE ACCOMPANYING PLAT IS
A TRUE EXHIBIT OF SAID SURVEY.

Francis D. Wagner

2 FEBRUARY, 1960



FRANCIS D. WAGNER
COUNTY ENGINEER
McPHERSON, KANSAS

MICROFILM