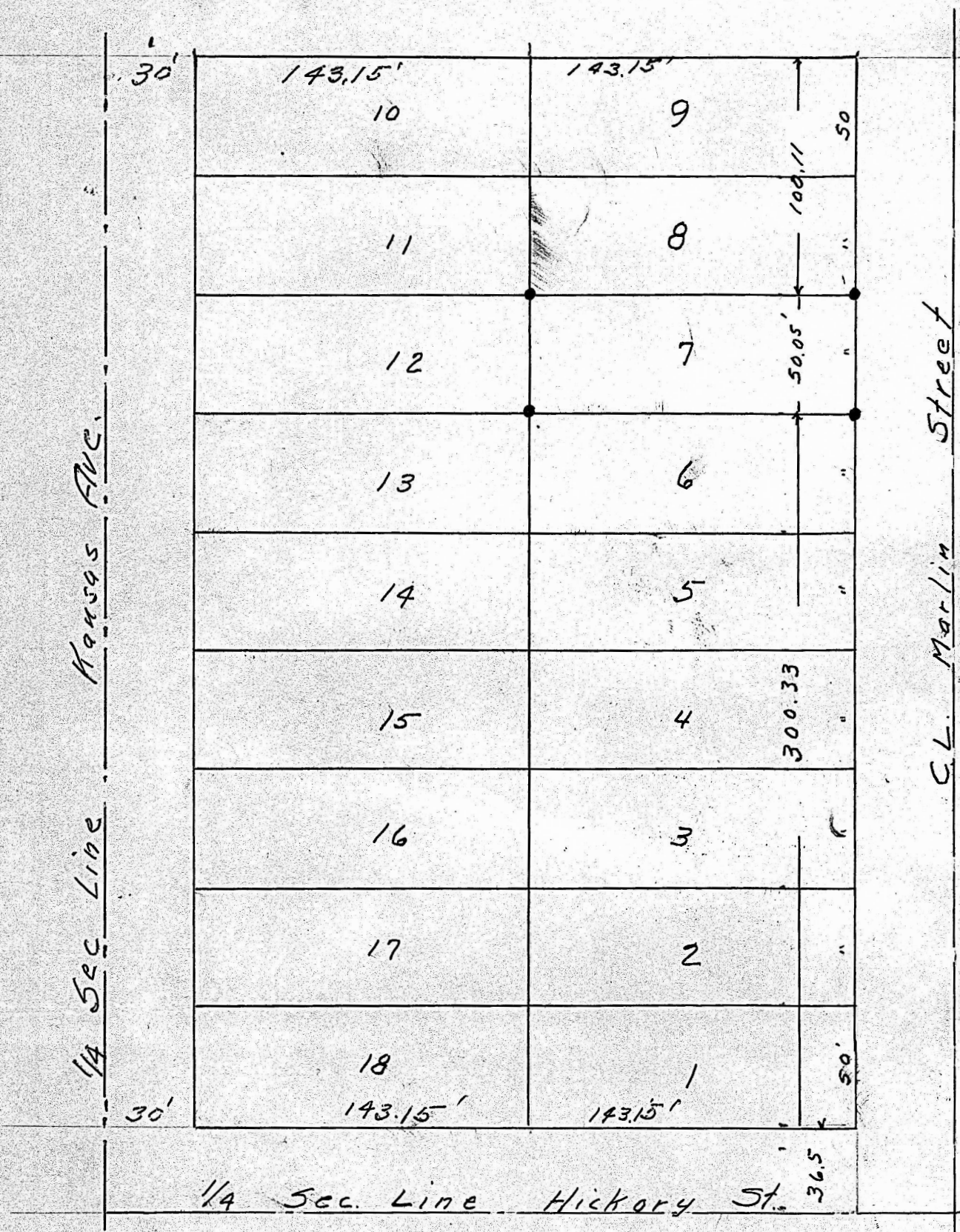


Lot 7, Block 9, Interstate Addition, McPherson, Kansas.



State of Kansas, County of McPherson, SS.

I, G.D. Johnson, Licensed Civil Engineer of the State of Kansas, do hereby certify that I did on the 27th. day of August, 1957 survey Lpt 7, Block 9, Interstate Addition to the City of McPherson Kansas and that accompanying plat is a true exhibit of said survey.

*G.D. Johnson*

