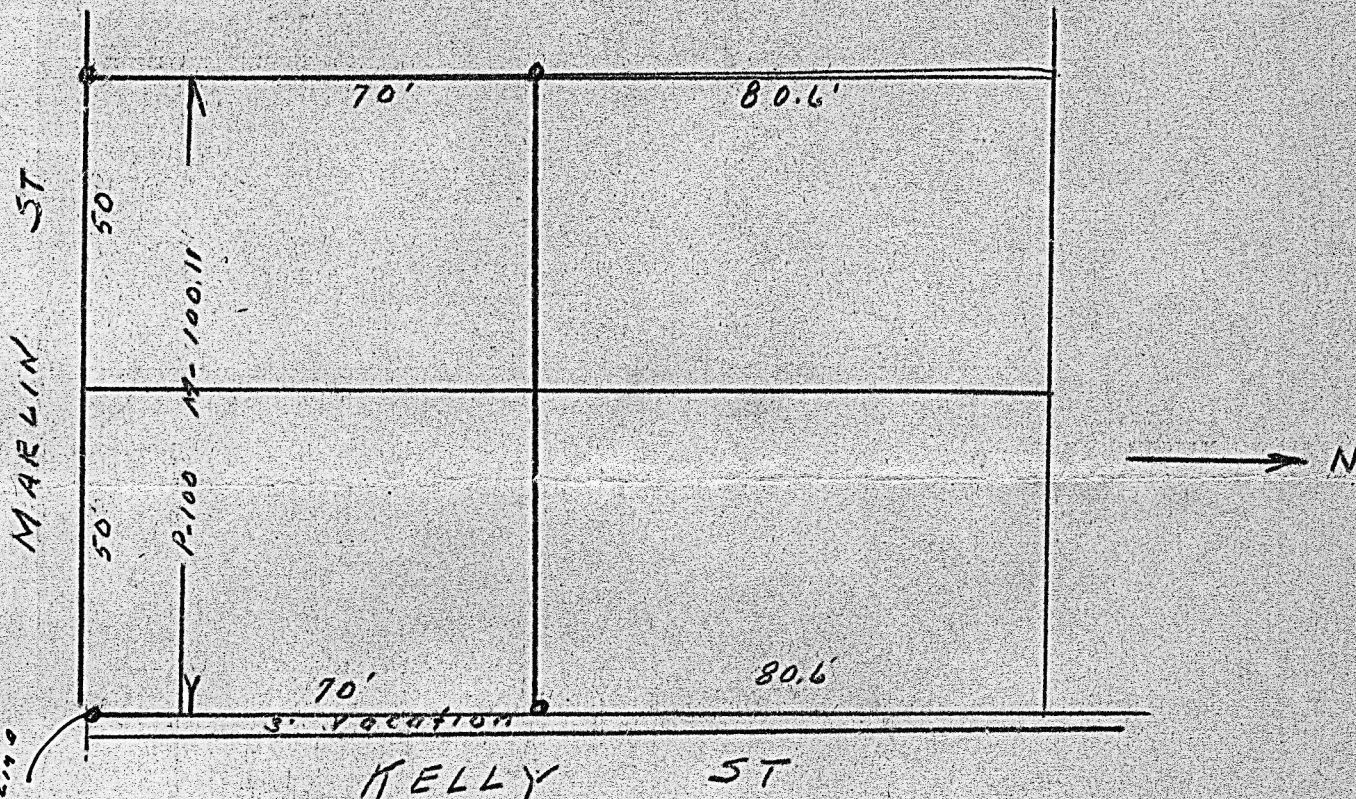


South 70 ft. of Lots 19 & 20., Block 3. Interstate Addition,
McPherson, Kansas.



State of Kansas, County of McPherson, ss.

I, G.D. Johnson, Licensed Civil Engineer of the State of Kansas
do hereby certify that I did on the 7th. day of July 1954, survey the
south 70 ft. of Lots 19 & 20., Block 3, Interstate Addition to the
City of McPherson, Kansas and that accompanying plat is a true exhibit
of said survey.

G.D. Johnson



MICROFILM