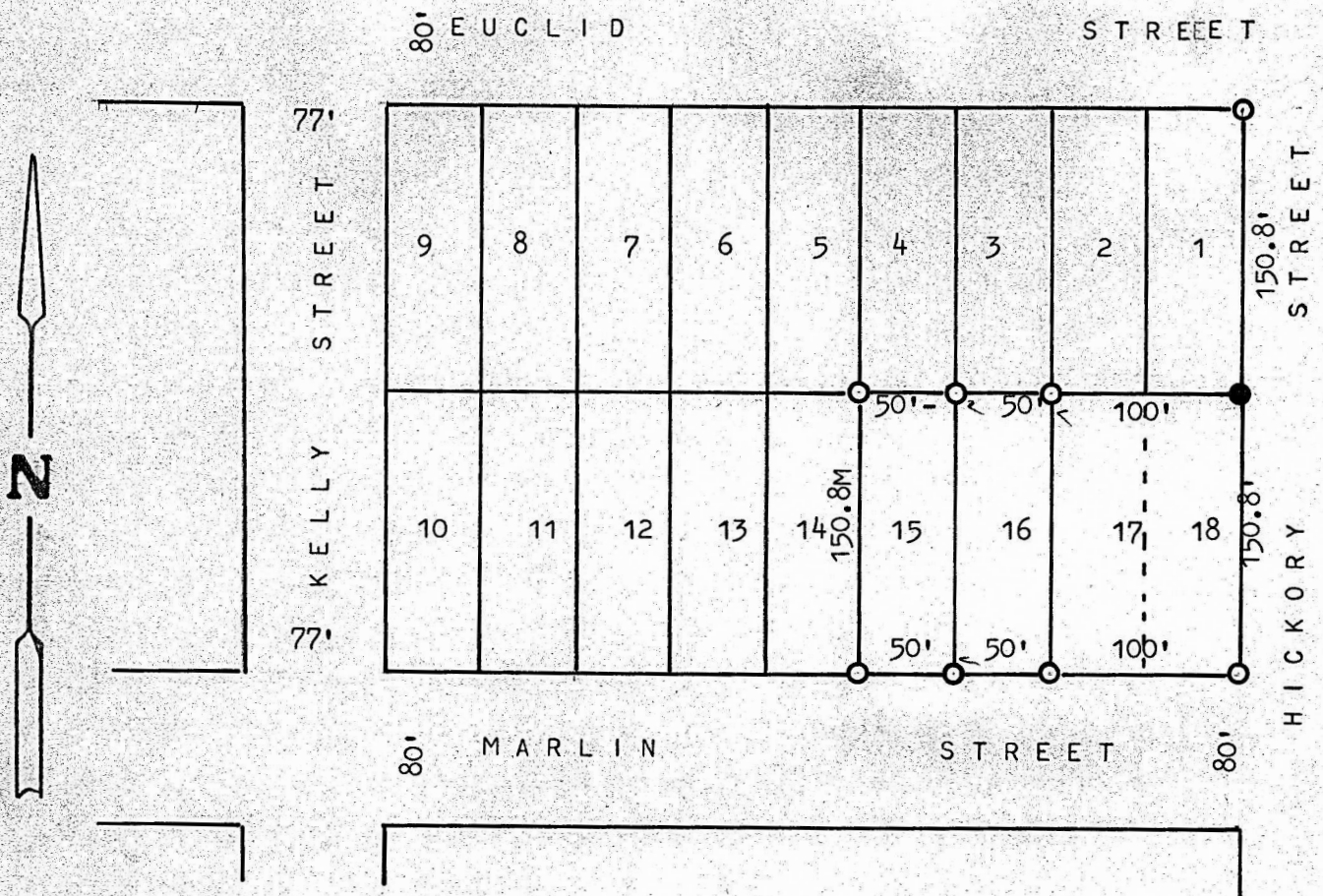


A SURVEY OF LOTS 15, 17 & 18
BLOCK TWO INTERSTATE ADDITION
MCPHERSON, KANSAS



- PINS ACCEPTED THIS SURVEY
- PINS SET THIS SURVEY

STATE OF KANSAS)
COUNTY OF MCPHERSON) SS

I, MELVIN FERGUSON, PROFESSIONAL ENGINEER OF THE STATE OF KANSAS DO HEREBY CERTIFY THAT UNDER MY SUPERVISION A SURVEY WAS MADE OF LOTS 15, 17 & 18, BLOCK 2, INTERSTATE ADDITION, TO THE CITY OF MCPHERSON, KANSAS, AND THAT THE ACCOMPANYING PLAT IS A TRUE EXHIBIT OF SAID SURVEY AS FAR AS IT IS KNOWN TO ME.

SURVEY CALLED FOR BY DONALD CAIN

SIGNED THIS 12th DAY OF FEBRUARY, 1976

Melvin Ferguson
MELVIN FERGUSON
PROFESSIONAL ENGINEER
MCPHERSON, KANSAS

