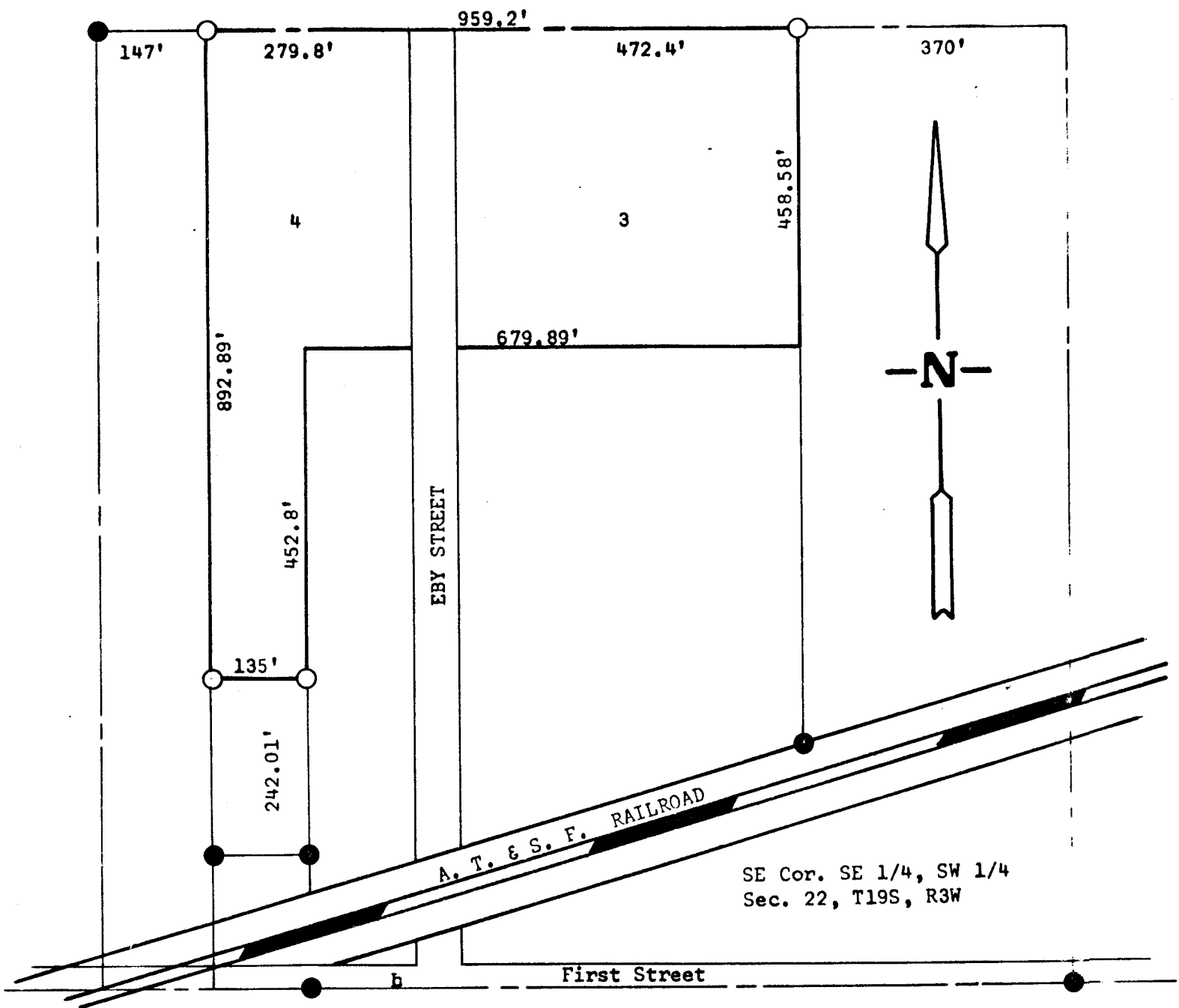


A SURVEY OF LOTS 3 & 4
INDUSTRIAL 1ST. ADDITION SUPPLEMENT 1
CITY OF MC PHERSON, KANSAS



- Pins Found This Survey
- Pins Set This Survey

State of Kansas)
County of McPherson) SS

I, Francis Rankin, County Engineer of McPherson County, Kansas, do hereby certify that under my supervision a survey was made of Lots 3 & 4, Industrial 1st Addition Supplement 1 to the City of McPherson, Kansas, and that the accompanying plat is a true exhibit of said survey as far as it is known to me.

Survey called for by Kit Manufacturing

Signed this 31 day of March, 1969

F. R. Rankin
County Engineer
McPherson, Kansas



MICROFILM

2 MICROFILMS