



Project No. G2007-160

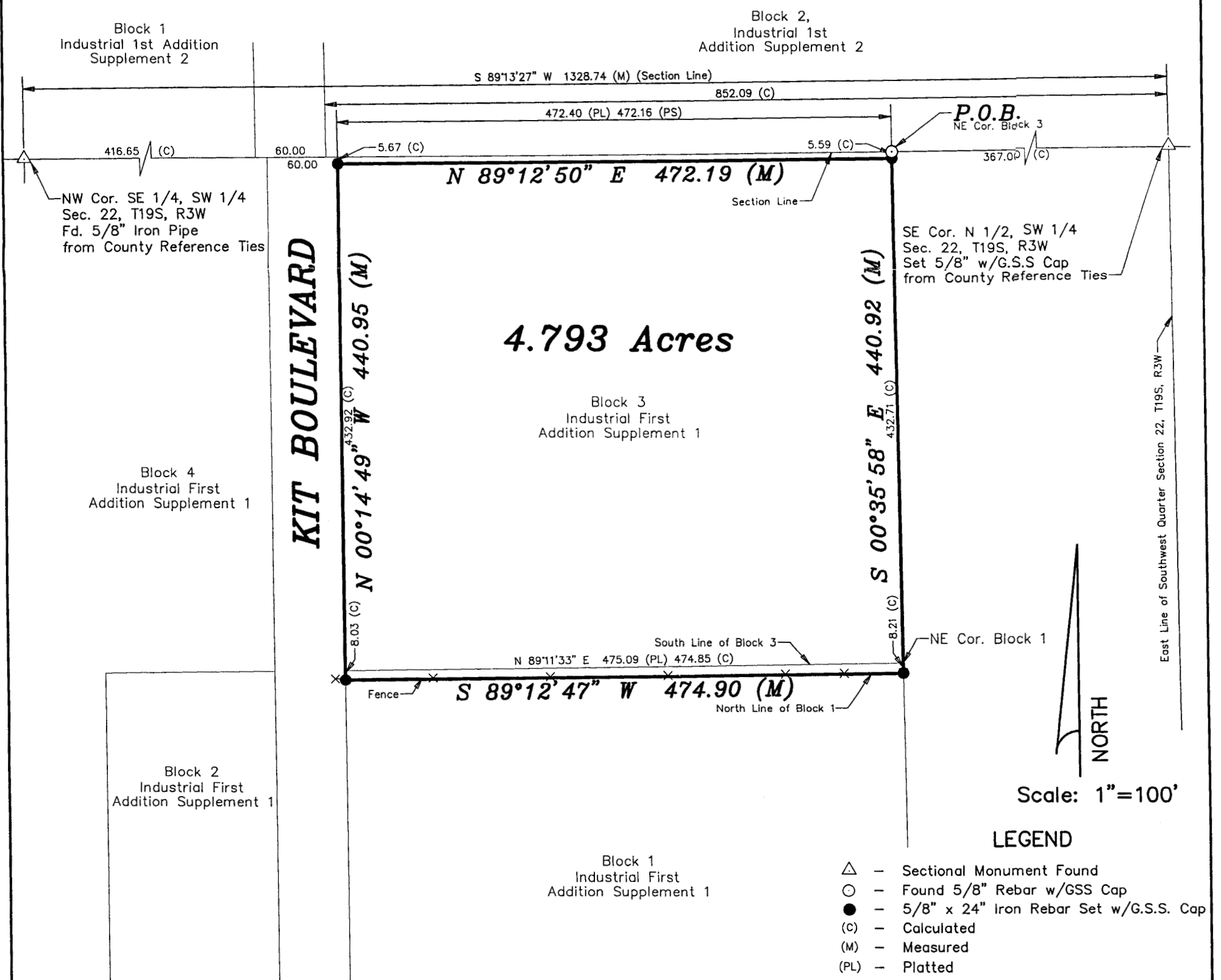
**SURVEY FOR:** KB PROPERTIES

**DESCRIPTION:** A portion of the Industrial First Addition Supplement 1 to the City of McPherson, McPherson County, Kansas, more particularly described as follows:

All of Block 3, Industrial First Addition Supplement 1 to the City of McPherson, McPherson County, Kansas, **EXCEPT THE FOLLOWING DESCRIBED TRACT:**

Beginning at the Northeast Corner of Block 3, Industrial First Addition Supplement 1 to the City of McPherson, Kansas; thence with an assumed bearing South 00°35'58" East along the East Line of said Block a measured distance of 5.59 feet; thence South 89°12'50" West 472.19 feet to the West line of said Block; thence North 00°14'49" West along the West line of said Block a measured distance of 5.67 feet to the Northwest Corner of said Block; thence North 89°13'27" East along the North line of said Block a measured distance of 472.16 feet (previously described as 472.40 feet) to the point of beginning. **AND TOGETHER WITH** a portion of Block 1, Industrial First Addition Supplement 1 to the City of McPherson, McPherson County, Kansas, more particularly described as follows:

Beginning at the Northeast Corner of Block 1, Industrial First Addition Supplement 1 to the City of McPherson, Kansas; thence with an assumed bearing South 00°35'58" East along the East Line of said Block a measured distance of 8.21 feet; thence South 89°12'47" West 474.90 feet to the Northwest Corner of said Block; thence North 00°14'49" West along the West line of said Block a measured distance of 8.03 feet to the Northwest Corner of said Block; thence North 89°11'33" East along the North line of said Block a measured distance of 474.85 feet (previously described as 475.09 feet) to the point of beginning. The above-described Parcel contains 4.793 Acres and is subject to any easements of record.



**DATE OF FIELD WORK:** April 5, 2007

**SURVEYOR'S CERTIFICATE:**

I hereby certify this plat to be a true, correct and complete representation of the property described above as surveyed under my supervision.  
Dated: April 19, 2007