

Luther Warner

lot 1-132

Holmes - Sub.

H. A. ROWLAND • Kansas Licensed Civil Engineer

Member

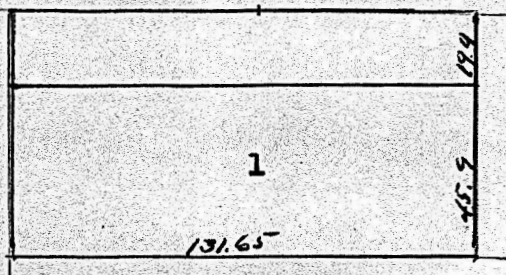
National Society Professional Engineers
Kansas Society Professional Engineers
Kansas Engineering Society

Mr. Clarence Warner--City.

PHONE 796 X

McPHERSON, KANSAS

Scale 1" = 50.0'



STATE OF KANSAS,
McPherson, County, ss.,

THIS IS TO CERTIFY, That I have made a survey of a tract of land as shown in the above plat and is in accordance with the same. The said tract consists of Lot 1 in Block 2 of Holmes Addition to McPherson, Kansas and a strip of ground taken off of what was formerly Albro street said tract abuts on the north side of lot 1 and is 19.4 feet wide north and south and 131.65 feet east and west. I marked the corners of the same with iron pins.

Dated at McPherson, Kansas, Sep. 27th 1950.

Signed:- *H. A. Rowland*

Registered Professional Engineer.



MICROFILM