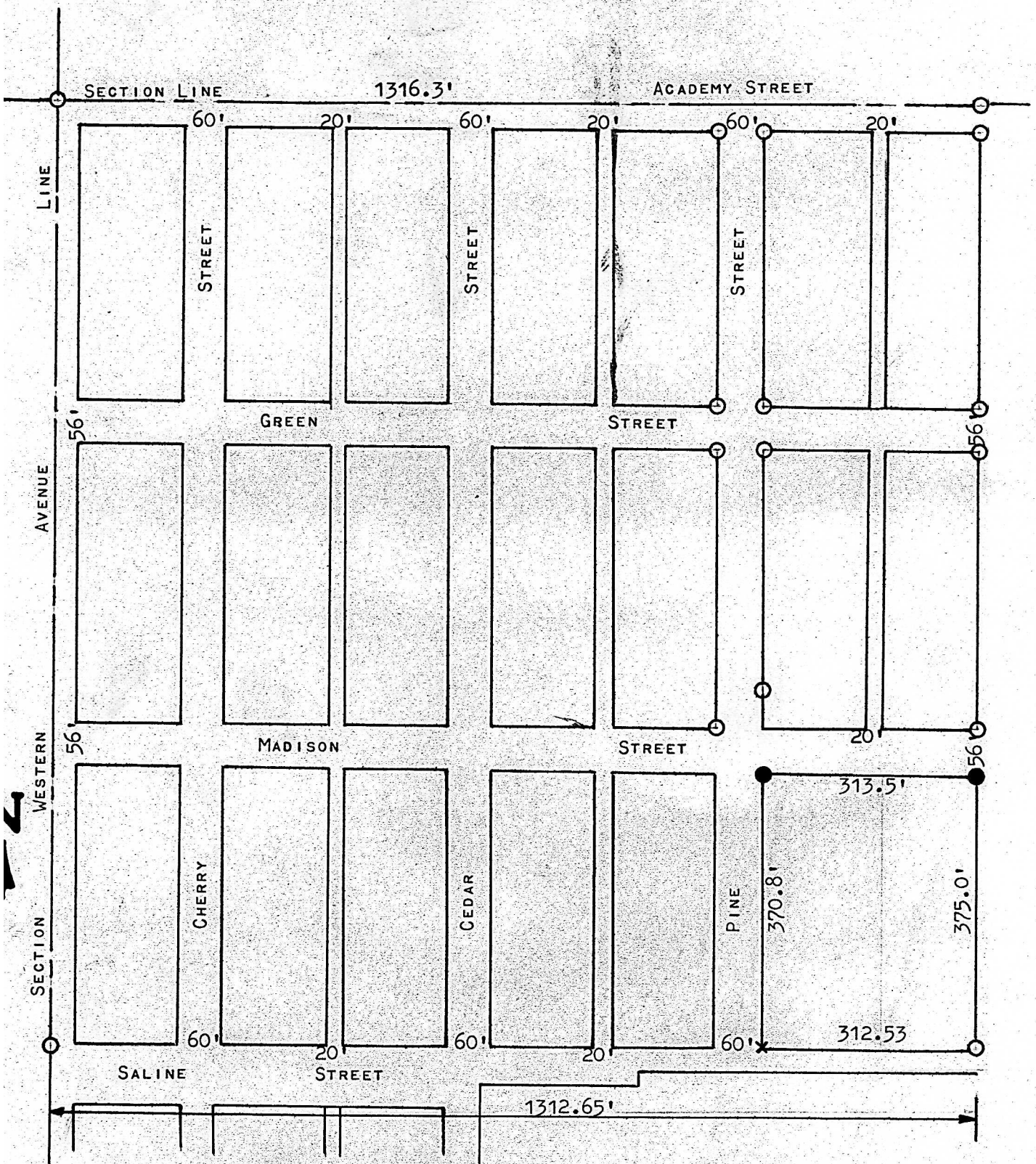


A SURVEY OF LOTS 65 THRU 94
HIGHLAND ADDITION, PINE STREET
LINDSBORG, KANSAS



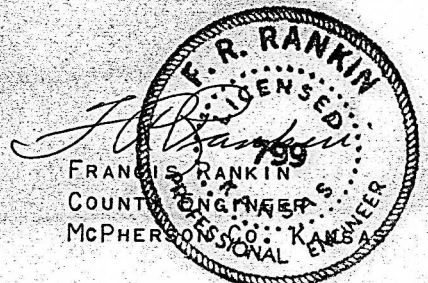
- PINS SET THIS SURVEY
- PINS FOUND THIS SURVEY
- X IN CONCRETE

STATE OF KANSAS)
COUNTY OF McPHERSON) ss

I, FRANCIS RANKIN, COUNTY ENGINEER OF McPHERSON COUNTY, KANSAS, DO HEREBY CERTIFY THAT UNDER MY SUPERVISION A SURVEY WAS MADE OF LOTS 65 THRU 94 HIGHLAND ADDITION, PINE STREET IN THE CITY OF LINDSBORG, KANSAS, AND THAT THE ACCOMPANYING PLAT IS A TRUE EXHIBIT OF SAID SURVEY AS FAR AS IT IS KNOWN TO ME.

SURVEY CALLED FOR BY

SIGNED THIS 30 DAY OF JULY, 1965.



MICROFILM