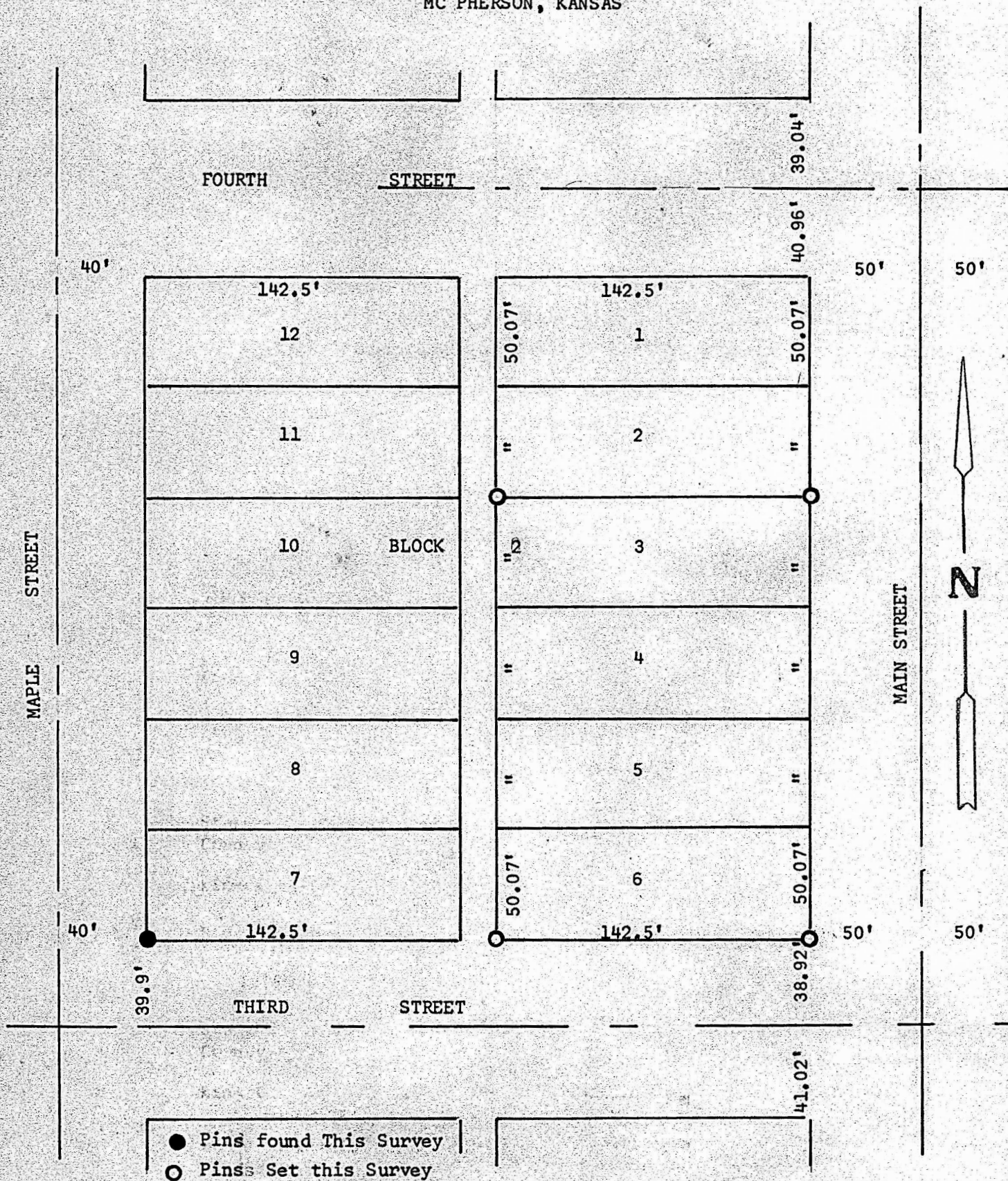


A SURVEY OF LOTS 3,4,5 & 6, BLOCK 2
HIGHLAND ADDITION
MC PHERSON, KANSAS



State of Kansas)
County of McPherson) SS

I, F. R. Rankin, County Engineer of McPherson County, Kansas, do hereby certify that under my supervision a survey of Lots 3,4,5 and 6, Block 2, Highland Addition to the City of McPherson, Kansas, and that the above plat is a true exhibit of said survey as far as it is known to me.

Survey called for Lee Craven
Signed this 23 day of October, 1970

F. R. Rankin
County Engineer
McPherson, Kansas

