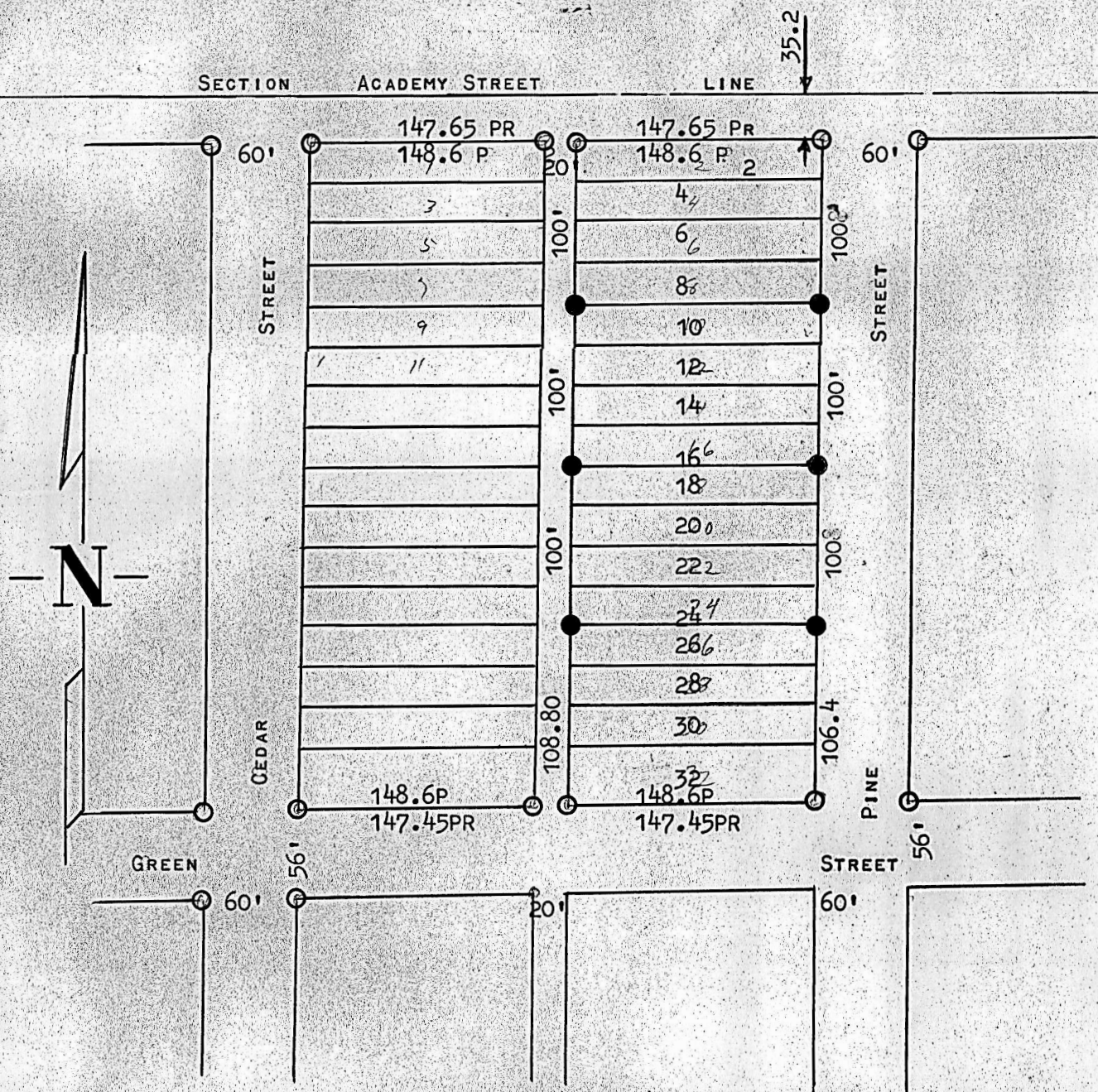


SURVEY IN
HIGHLAND ADDITION
CITY OF LINSBORG



○ PINS FOUND THIS SURVEY
● PINS SET THIS SURVEY

STATE OF KANSAS
COUNTY OF McPHERSON SS

I, FRANCIS RANKIN, REGISTERED PROFESSIONAL ENGINEER OF THE STATE OF KANSAS DO HEREBY CERTIFY THAT I DID CAUSE TO BE DONE ON THE 21ST DAY OF MARCH, 1962 A SURVEY DESCRIBED AS FOLLOWS:

LOTS 2, 4, 6, 8; LOTS 10, 12, 14, 16, AND LOTS 18, 20, 22, 24 HIGHLAND ADDITION, ON PINE STREET IN THE CITY OF LINSBORG, KANSAS AND THAT THE ACCOMPANY PLAT IS A TRUE EXHIBIT OF SAID SURVEY AS FAR AS IT IS KNOWN TO ME.

Francis Rankin
FRANCIS RANKIN
PROFESSIONAL ENGINEER
799
KANSAS
REGISTERED PROFESSIONAL ENGINEER

NOTE: TO COINCIDE WITH PREVIOUS SURVEYS DONE IN THIS ADDITION, THE CENTER LINE OF GREEN STREET EXTENDED, AND THE CENTER LINE OF CHESTNUT STREET WERE USED AS BASE LINES ON THIS SURVEY.