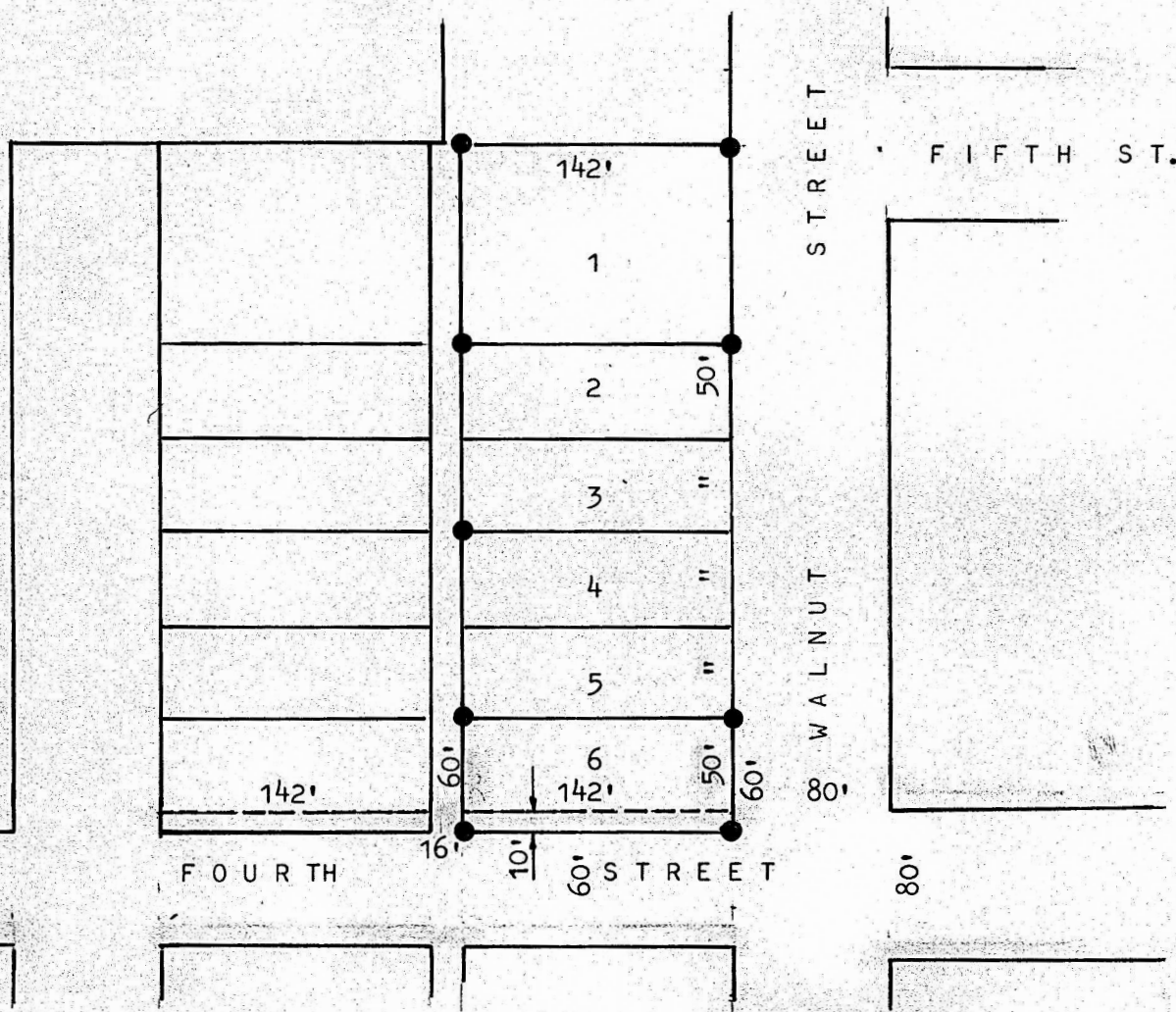


CORRECTED PLAT - AUG., 1977  
 A SURVEY OF LOT 6, BLOCK 10, HIGHLAND ADDITION  
 AND THE NORTH 10' OF 4TH STR.  
 MCPHERSON, KANSAS



- PINS FOUND THIS SURVEY
- PINS SET THIS SURVEY

STATE OF KANSAS )  
 COUNTY OF MCPHERSON ) SS

I, MELVIN FERGUSON, PROFESSIONAL ENGINEER OF THE STATE OF KANSAS DO HEREBY CERTIFY THAT UNDER MY SUPERVISION A SURVEY WAS MADE OF LOT 6, BLOCK-10, HIGHLAND ADDITION, TO THE CITY OF MCPHERSON, KANSAS, AND THE NORTH 10 FEET OF FOURTH STREET. I ALSO CERTIFY THAT THE ACCOMPANYING PLAT IS A TRUE EXHIBIT OF SAID SURVEY AS FAR AS IT IS KNOWN TO ME.  
 SURVEY CALLED FOR BY JOHN NELSON.

SIGNED ON THIS 22<sup>ND</sup> DAY OF SEPTEMBER, 1975

Melvin Ferguson  
 MELVIN FERGUSON  
 PROFESSIONAL ENGINEER  
 MCPHERSON, KANSAS 6772