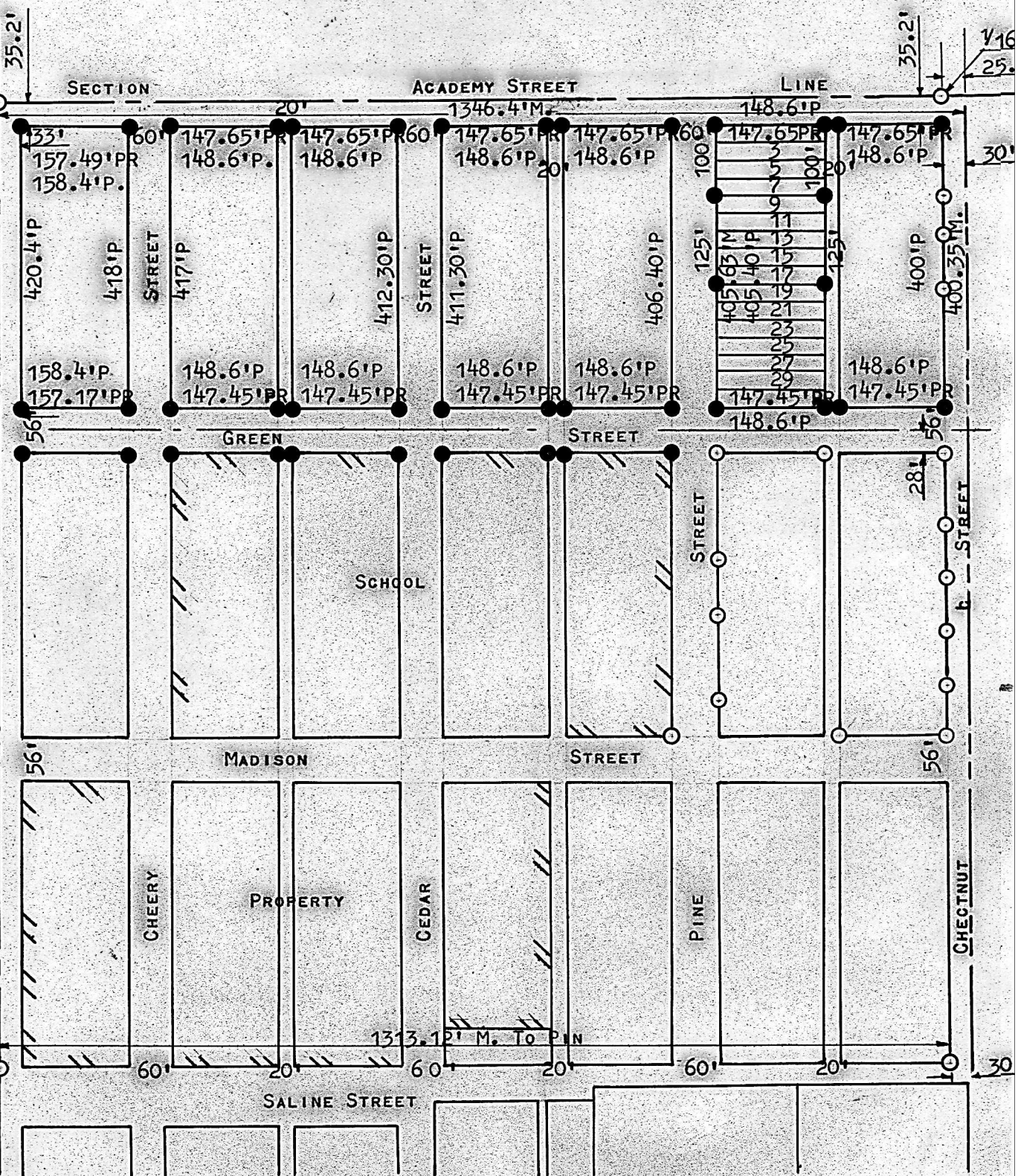


SURVEY IN  
HIGHLAND ADDITION  
CITY OF LINDSBORG



- PINS FOUND THIS SURVEY.  
● 3/4" PIPE SET THIS SURVEY.

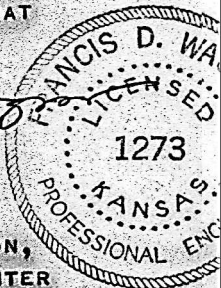
STATE OF KANSAS ) SS  
COUNTY OF McPHERSON)

I, FRANCIS D. WAGNER, COUNTY ENGINEER OF McPHERSON COUNTY, KANSAS DO HEREBY CERTIFY THAT I DID CAUSE TO BE DONE ON THE 19TH DAY OF SEPTEMBER, 1961 A SURVEY DESCRIBED AS FOLLOWS:

LOTS 1, 3, 5, 7, AND LOTS 9, 11, 13, 15, 17 HIGHLAND ADDITION, PINE STREET IN THE CITY OF LINDSBORG, KANSAS AND THAT THE ACCOMPANYING PLAT IS A TRUE EXHIBIT OF SAID SURVEY.

*Francis D. Wagner*

FRANCIS D. WAGNER  
COUNTY ENGINEER  
McPHERSON COUNTY



SEPTEMBER 20, 1961

NOTE: TO COINCIDE WITH PREVIOUS SURVEYS DONE IN THIS ADDITION, THE CENTER LINE OF GREEN STREET EXTENDED, AND THE CENTER LINE OF CHESTNUT STREET WERE USED AS BASE LINES ON THIS SURVEY.