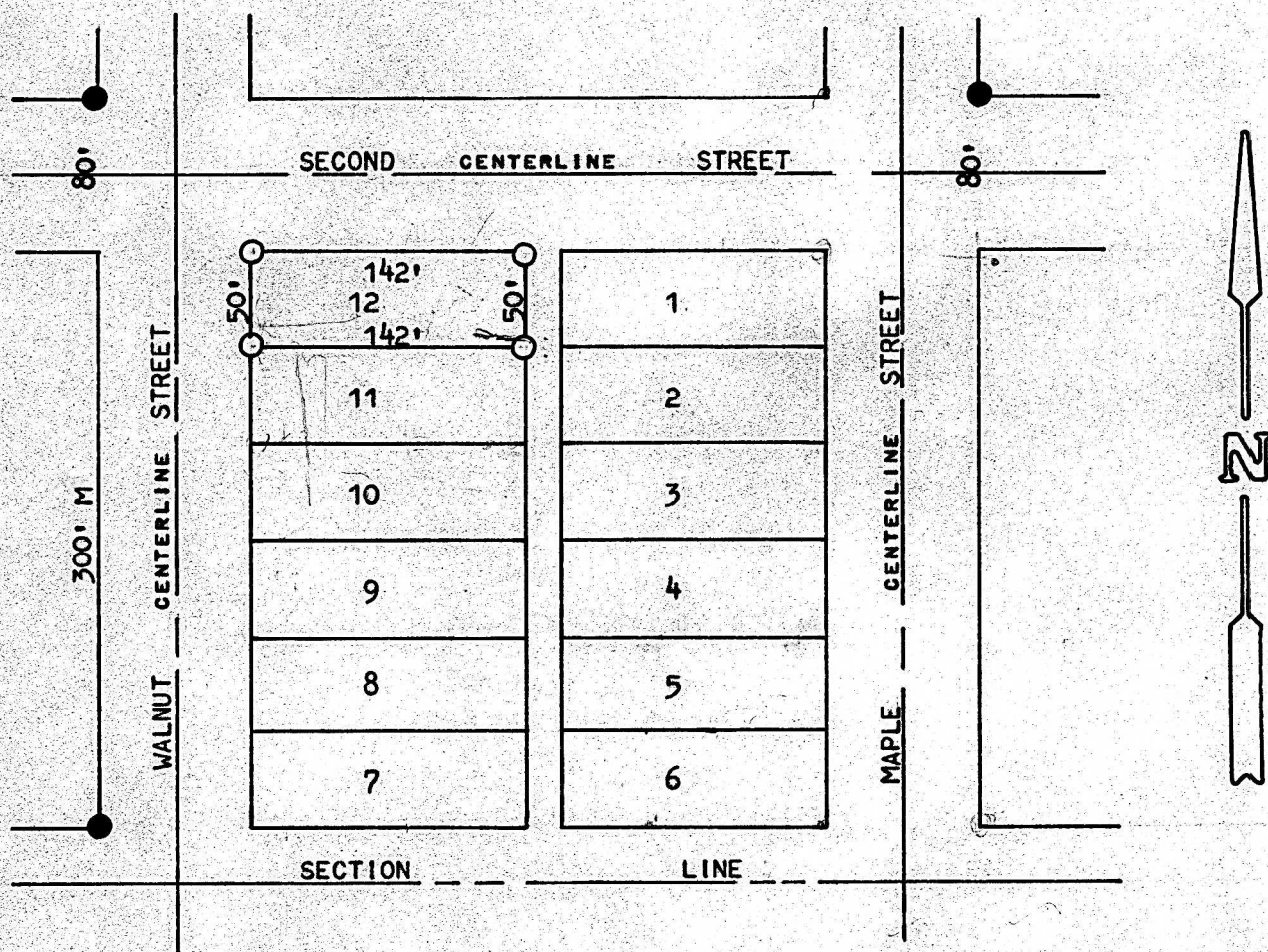


A SURVEY OF LOT 12, BLOCK 7,  
HIGHLAND ADDITION,  
MCPHERSON, KANSAS



- PINS FOUND THIS SURVEY
- PINS SET THIS SURVEY

STATE OF KANSAS )  
COUNTY OF MCPHERSON ) SS

I, MELVIN FERGUSON, COUNTY ENGINEER OF MCPHERSON COUNTY, KANSAS, DO  
HEREBY CERTIFY THAT UNDER MY SUPERVISION A SURVEY WAS MADE OF LOT 12 OF  
BLOCK 7, HIGHLAND ADDITION TO THE CITY OF MCPHERSON, KANSAS, AND THAT THE  
ABOVE PLAT IS A TRUE EXHIBIT OF SAID SURVEY AS FAR AS IT IS KNOWN TO ME.

SURVEY CALLED FOR BY JIM HOLLOWAY.

SIGNED THIS 15<sup>th</sup> DAY OF AUGUST, 1974.

*Melvin Ferguson*  
MELVIN FERGUSON

COUNTY ENGINEER

MCPHERSON COUNTY, KANSAS

