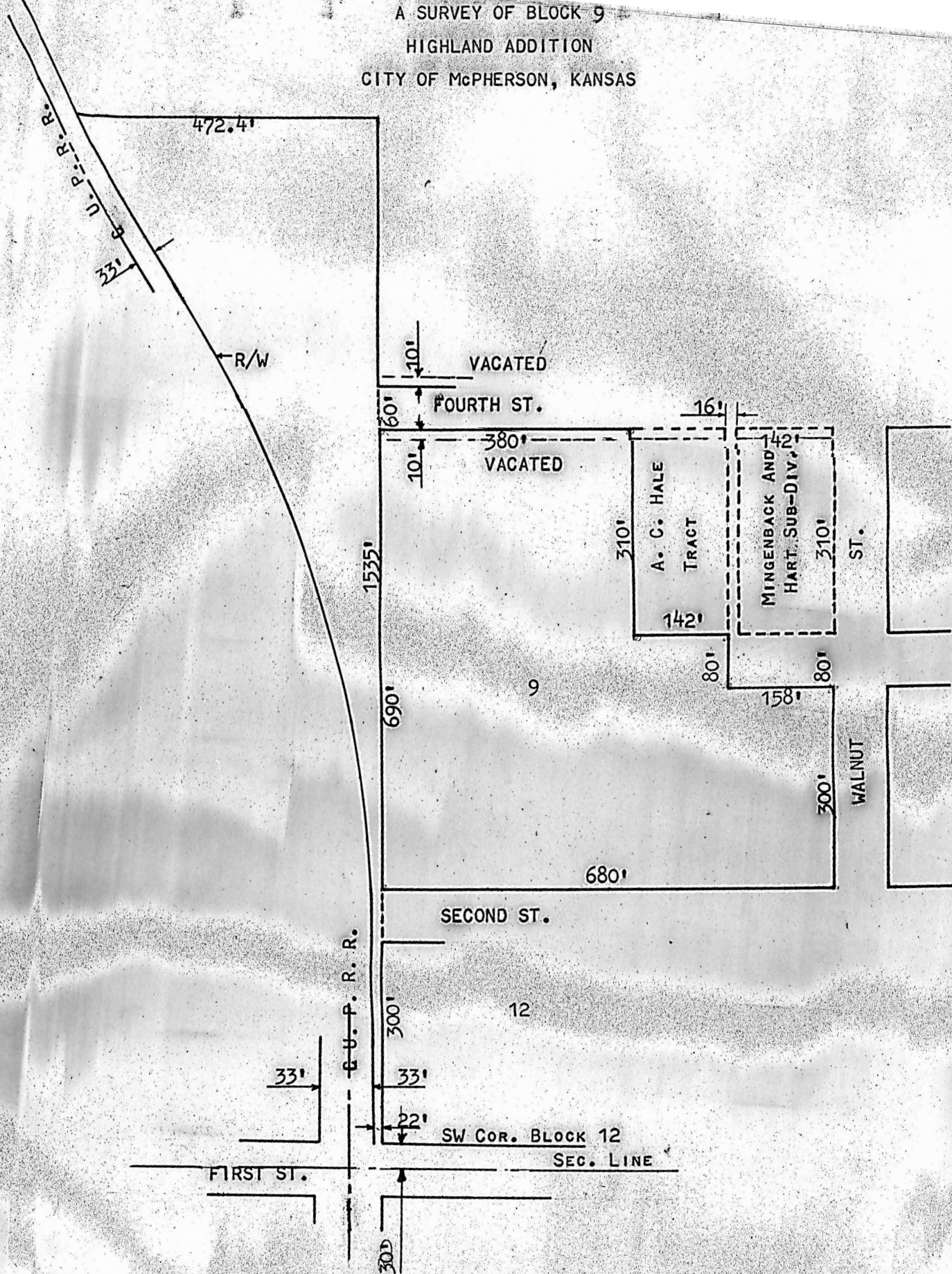


A SURVEY OF BLOCK 9
HIGHLAND ADDITION
CITY OF McPHERSON, KANSAS



STATE OF KANSAS)
COUNTY OF McPHERSON) SS

I, FRANCIS D. WAGNER, COUNTY ENGINEER OF McPHERSON COUNTY, KANSAS DO HEREBY CERTIFY THAT I DID CAUSE TO BE DONE ON THE 15TH DAY OF MARCH 1961, A SURVEY OF BLOCK 9, HIGHLAND ADDITION TO THE CITY OF McPHERSON, EXCEPT MINGENBACK AND HART SUBDIVISION AND A TRACT 142'X300' PLUS A 10' STRIP VACATED ON THE SOUTH SIDE OF FOURTH STREET, AND THAT THE ACCOMPANYING PLAT IS A TRUE EXHIBIT OF SAID SURVEY.

OCT. 28, 1961

Francis D. Wagner
FRANCIS D. WAGNER
COUNTY ENGINEER

MICROFILM