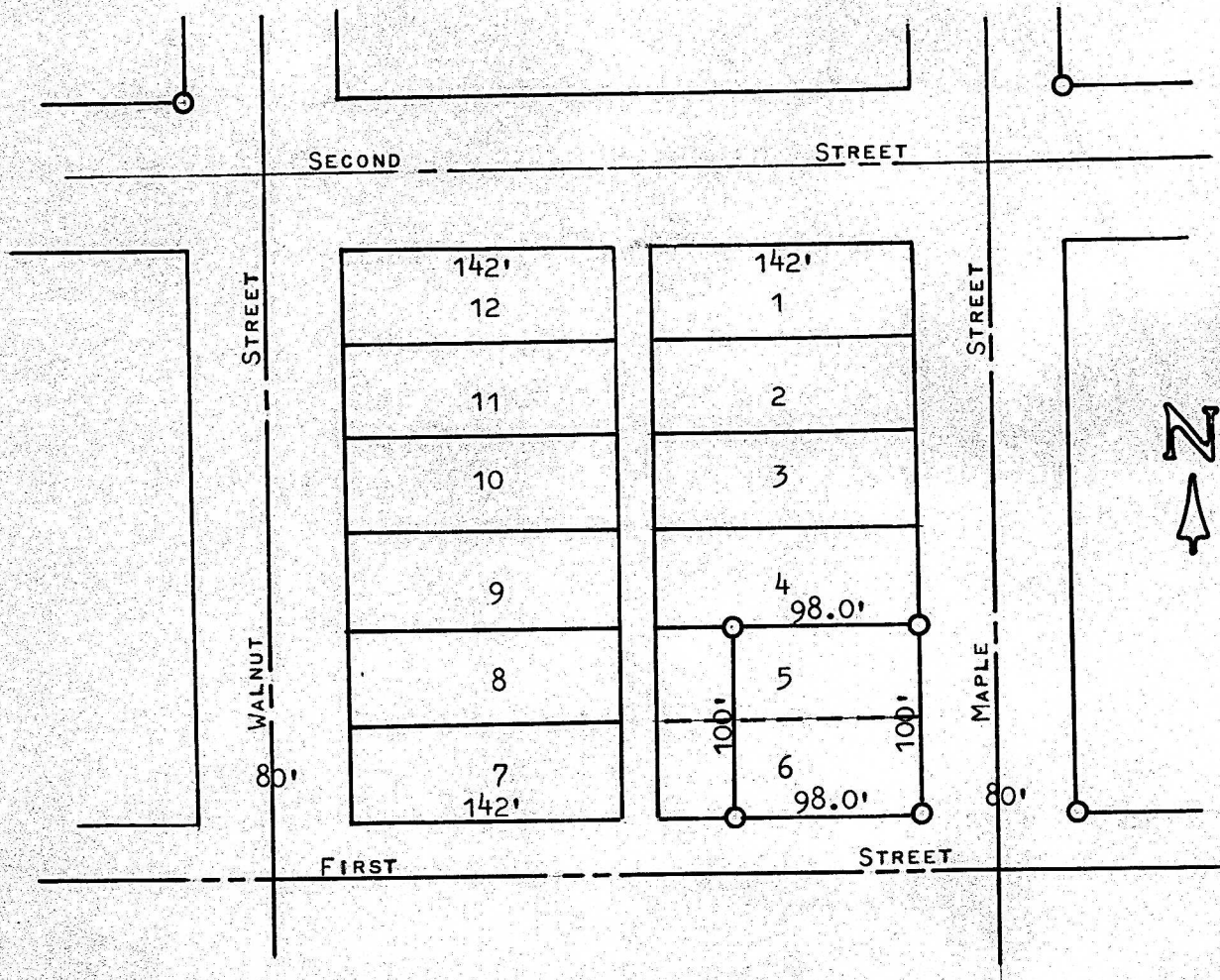


A SURVEY OF THE EAST 98 FEET OF  
 LOTS 5 & 6, BLOCK 7  
 HIGHLAND ADDITION  
 MCPHERSON, KANSAS



○ PINS FOUND THIS SURVEY

STATE OF KANSAS )  
 ) SS  
 COUNTY OF MCPHERSON)

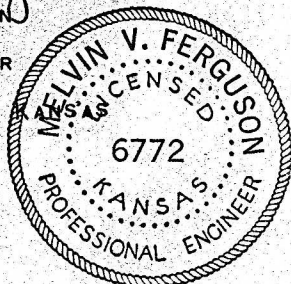
I, MELVIN FERGUSON, COUNTY ENGINEER OF MCPHERSON COUNTY, KANSAS, DO  
 HEREBY CERTIFY THAT UNDER MY SUPERVISION A SURVEY WAS MADE OF THE EAST  
 98 FEET OF LOTS 5 & 6, BLOCK 7, HIGHLAND ADDITION TO THE CITY OF  
 MCPHERSON, KANSAS, AND THAT THE ABOVE PLAT IS A TRUE EXHIBIT OF SAID  
 SURVEY AS FAR AS IT IS KNOWN TO ME.

SURVEY CALLED FOR BY C. WIENS

SIGNED ON THIS 21<sup>st</sup> DAY OF OCTOBER, 1975.

*Melvin Ferguson*  
 MELVIN FERGUSON

COUNTY ENGINEER  
 MCPHERSON CO., KANSAS



MICROFILM

MICROFILM