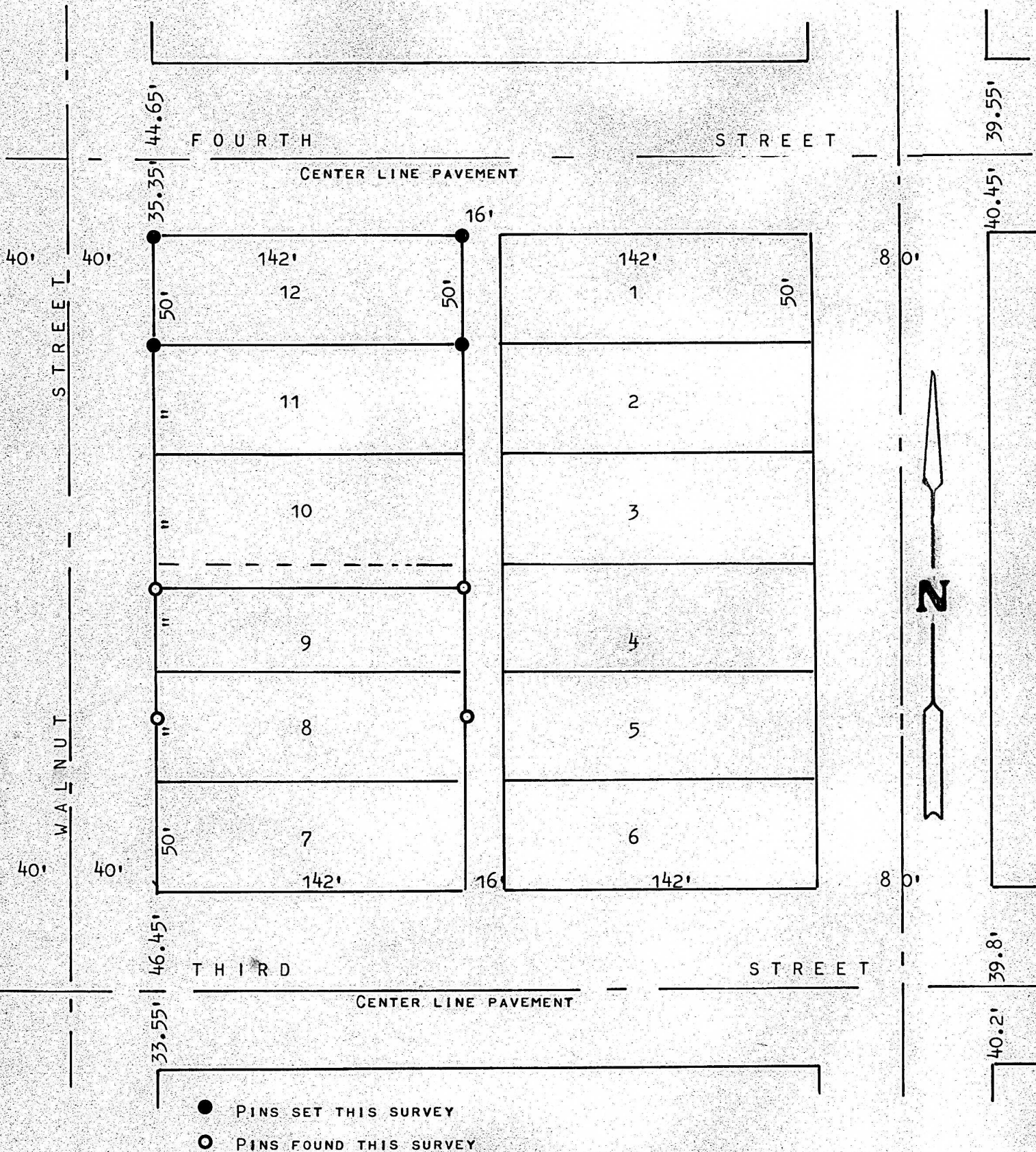


A SURVEY OF LOT 12, BLOCK 5, HIGHLAND ADDITION

MCPHERSON, KANSAS



STATE OF KANSAS)
COUNTY OF MCPHERSON) SS

I, MELVIN FERGUSON, PROFESSIONAL ENGINEER OF THE STATE OF KANSAS DO HEREBY CERTIFY THAT UNDER MY SUPERVISION A SURVEY WAS MADE OF LOT 12, BLOCK 5, HIGHLAND ADDITION TO THE CITY OF MCPHERSON, KANSAS, AND THAT THE ABOVE PLAT IS A TRUE EXHIBIT OF SAID SURVEY AS FAR AS IT IS KNOWN TO ME.

SURVEY CALLED FOR BY DORIS SCHAFF

SIGNED THIS 2nd DAY OF SEPTEMBER, 1975

Melvin Ferguson
MELVIN FERGUSON
PROFESSIONAL ENGINEER
MCPHERSON, KANSAS

MELVIN FERGUSON
LICENSED
6772
KANSAS
PROFESSIONAL ENGINEER

MICROFILM