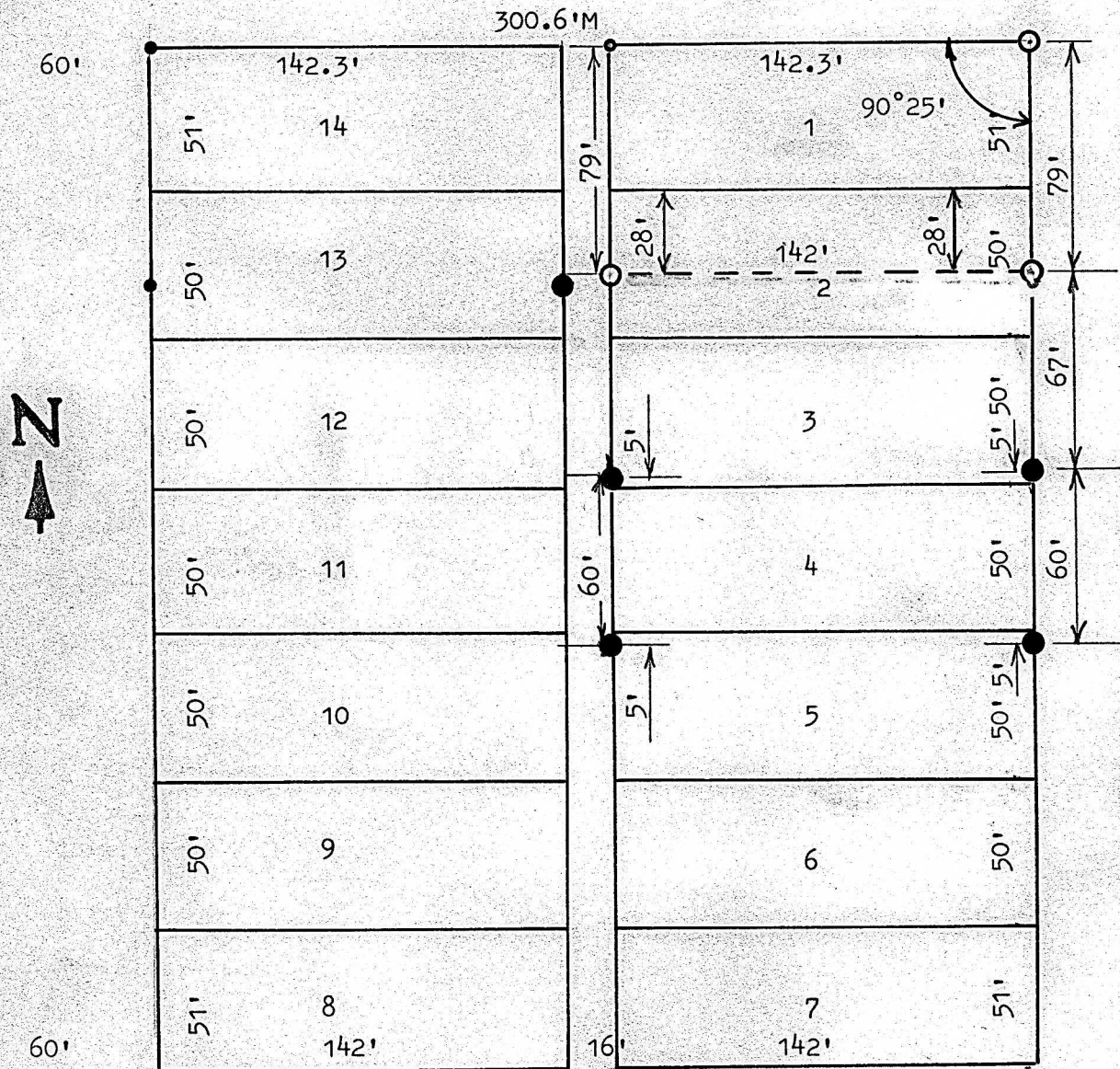


S T R E E T



- PINS FOUND THIS SURVEY
- PINS SET THIS SURVEY H A Y E S
- NAILS SET IN CONCRETE SIDEWALK

1, FRANCIS RANKIN, PROFESSIONAL ENGINEER OF THE STATE OF KANSAS DO HEREBY CERTIFY THAT UNDER MY SUPERVISION A SURVEY WAS MADE OF LOT 1, AND THE NORTH 28 FEET OF LOT 2, BLOCK 1, HEDGE'S REPLAT TO THE CITY OF McPHERSON, KANSAS AND THAT THE ACCOMPANYING PLAT IS A TRUE EXHIBIT OF SAID SURVEY AS FAR AS IT IS KNOWN TO ME.

SURVEY CALLED FOR RAY HARDER

SIGNED THIS DAY OF SEPTEMBER

FRANCIS RANKIN  
PROFESSIONAL ENGINEER  
McPHERSON, KANSAS



**MICROFILM**