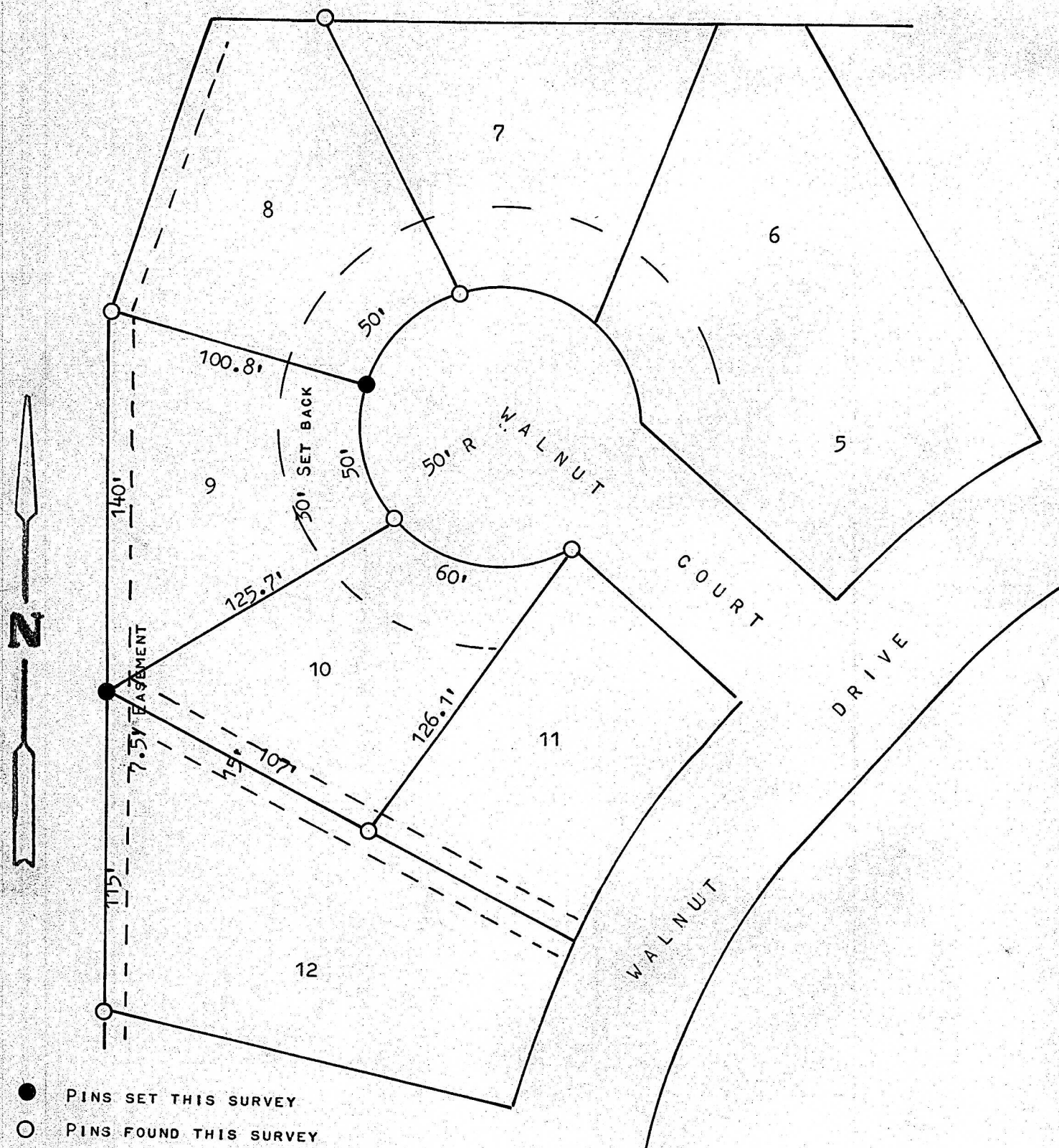


A SURVEY OF LOTS 9 & 10, BLOCK 1
HARRY SPENCE ADDITION, MCPHERSON



STATE OF KANSAS:)
COUNTY OF MCPHERSON) SS

I, MELVIN FERGUSON, PROFESSIONAL ENGINEER OF THE STATE OF KANSAS DO HEREBY CERTIFY THAT UNDER MY SUPERVISION A SURVEY WAS MADE OF LOTS 9 & 10, BLOCK 1, HARRY SPENCE ADDITION, TO THE CITY OF McPHERSON, KANSAS, AND THAT THE ABOVE PLAT IS A TRUE EXHIBIT OF SAID SURVEY AS FAR AS IT IS KNOWN TO ME.

SURVEY CALLED FOR BY PETERS LUMBER CO.

SIGNED ON THIS 1st DAY OF MARCH, 1974

MELVIN FERGUSON
PROFESSIONAL ENGINEER
MCPHERSON, KANSAS



MICROFILM