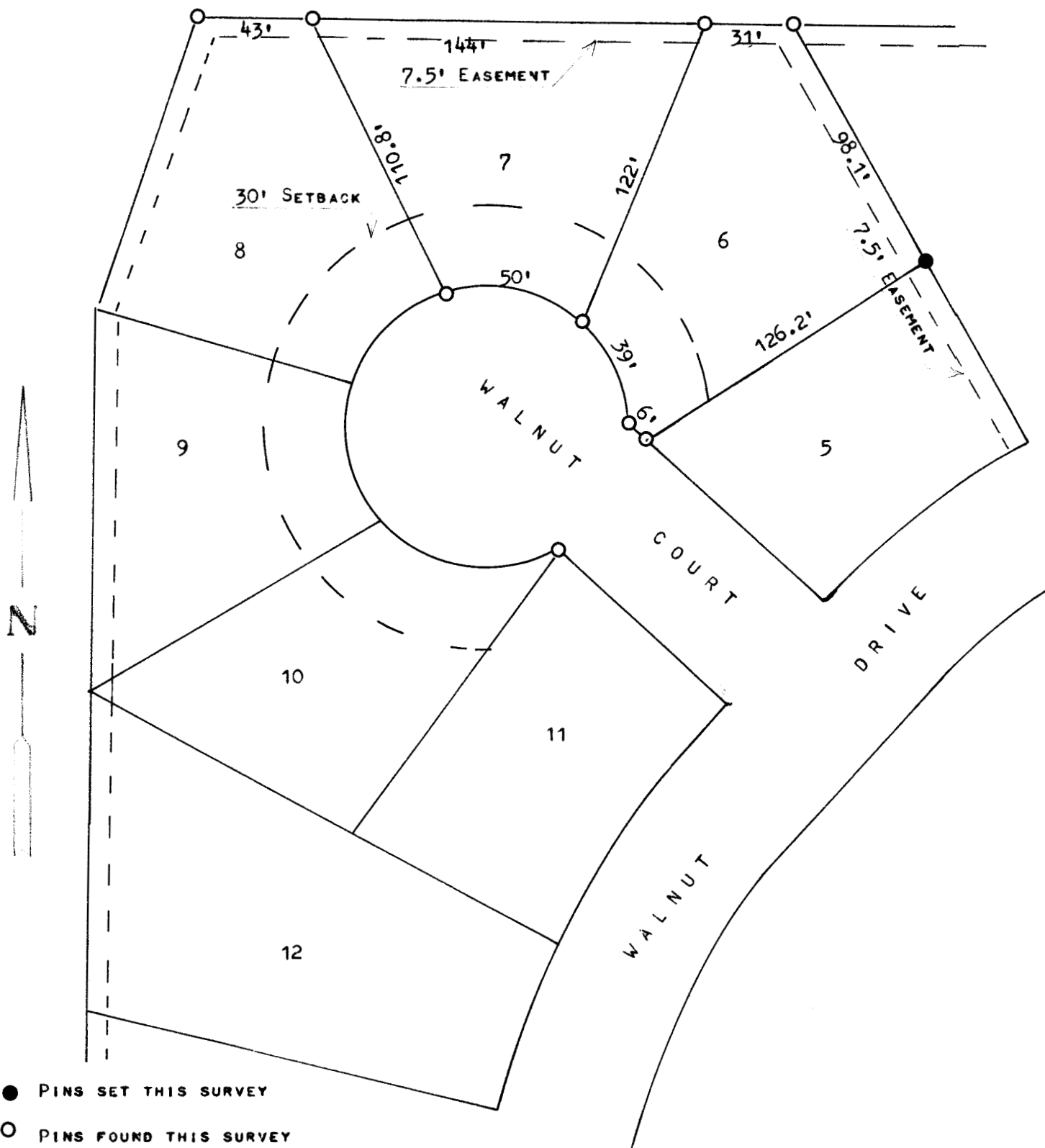


A SURVEY OF LOTS 6 & 7, BLOCK 1  
HARRY SPENCE ADDITION, MCPHERSON



- PINS SET THIS SURVEY
  - PINS FOUND THIS SURVEY
- STATE OF KANSAS )  
COUNTY OF MCPHERSON) SS

I, MELVIN FERGUSON, PROFESSIONAL ENGINEER OF THE STATE OF KANSAS DO HEREBY CERTIFY THAT UNDER MY SUPERVISION A SURVEY WAS MADE OF LOTS 7 & 6, BLOCK 1, HARRY SPENCE ADDITION, TO THE CITY OF MCPHERSON, KANSAS, AND THAT THE ABOVE PLAT IS A TRUE EXHIBIT OF SAID SURVEY AS FAR AS IT IS KNOWN TO ME.

SURVEY CALLED FOR BY PETERS LUMBER Co.

SIGNED THIS 31 DAY OF AUGUST, 1974

MELVIN FERGUSON  
PROFESSIONAL ENGINEER  
MCPHERSON, KANSAS

