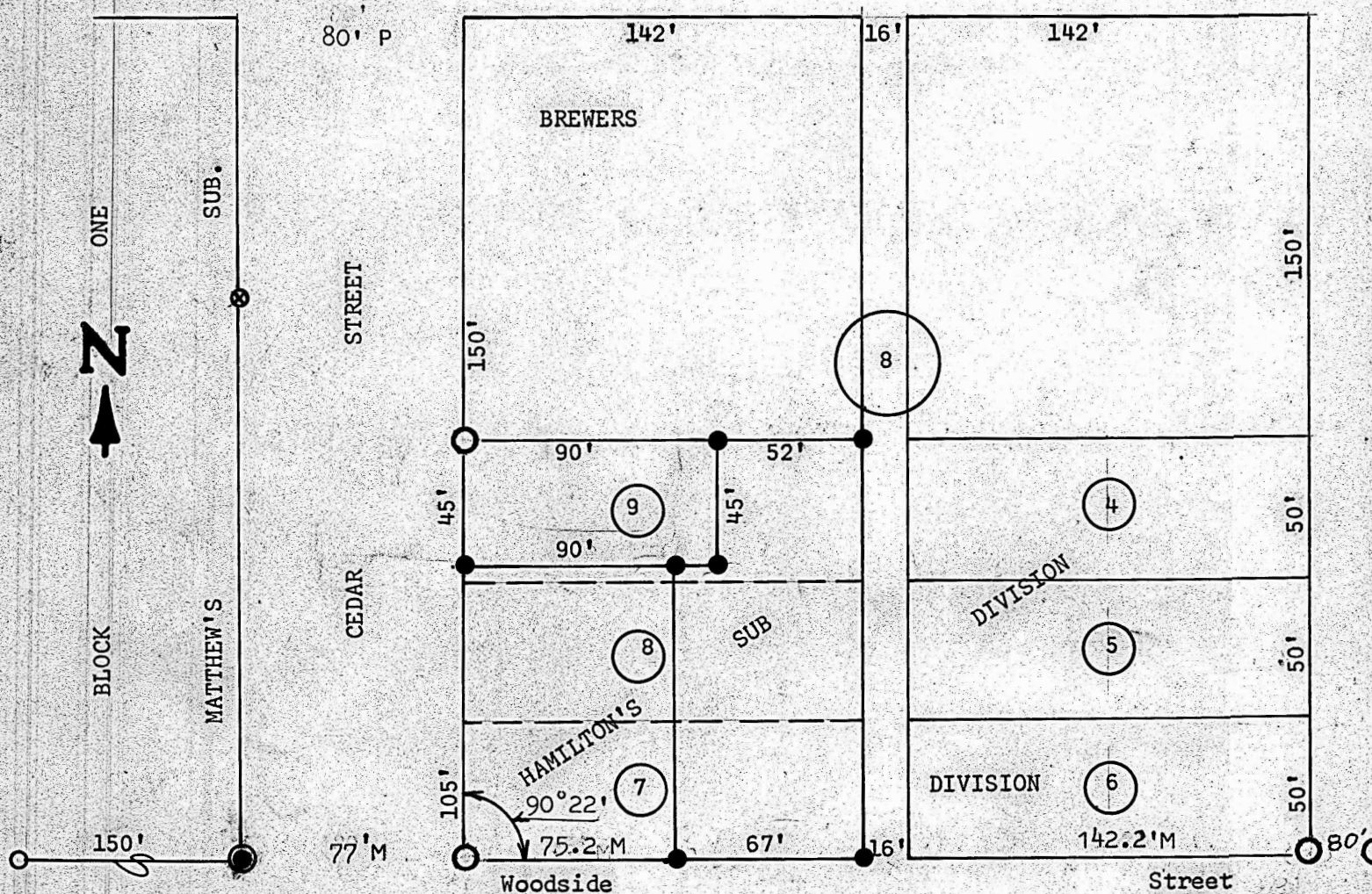


A Survey of part of Lots 7, 8 & 9
Hamilton Sub-Division



- ⊗ X in concrete
- Pins FOUND THIS SURVEY
- Pin in concrete
- Pins set this Survey

State of Kansas)
County of McPherson)ss

I, Francis Rankin, County Engineer of McPherson County, Kansas, do hereby certify that under my supervision a survey was made of the East 67 feet of Lots 7 & 8 and the East 67 feet of South 5 feet of 9, and the East 52 feet of the North 45 feet of Lot 9, Hamilton's Sub-Division to the City of McPherson, Kansas and the above plat is a true exhibit of said survey as far as it known to me.

Survey called for by Simon Unruh

Signed this 9/ day of March 1966

F. R. Rankin
F. R. Rankin
County Engineer
McPherson, Kansas

799
KANSAS
PROFESSIONAL ENGINEER

Field Notes in City Field Book #1 Pages 53 & 54

MICROFILM