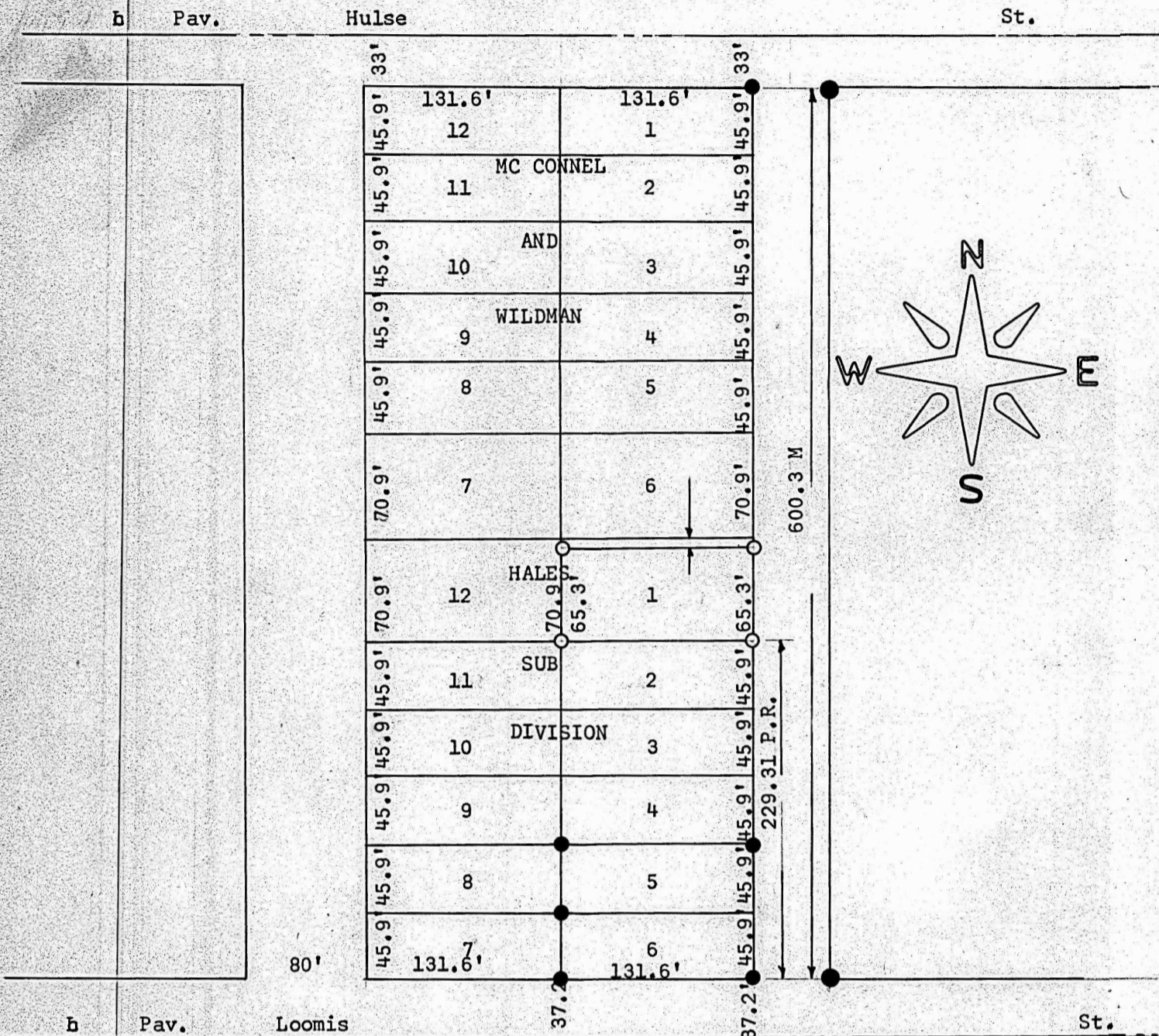


SURVEY SOUTH 65.3' of Lot 1
BLOCK 2, Hales SUB-DIVISION
MC PHERSON, KANSAS

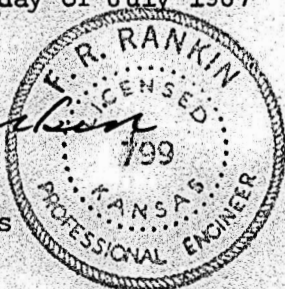


- Pins Set Previous Survey
- Pins Set this Survey

State of Kansas)
County of McPherson) SS

I, F. R. Rankin, County Engineer of McPherson County, Kansas, do hereby certify that under my supervision a survey was made of the South 65.3 feet of Lot 1, Block 2 of Hales Sub-Division to the city of McPherson, Kansas and the above plat is a true exhibit of said survey as far as it is known to me.
Survey called for by Entriken-Perrin Agency
Signed this 19 day of July 1967

F. R. Rankin
F. R. Rankin
County Engineer
McPherson, Kansas



MICROFILM