

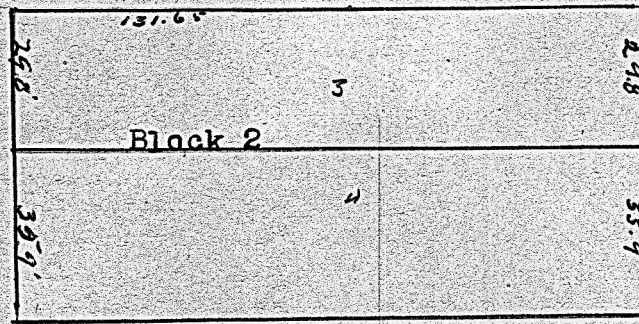
H. A. ROWLAND • Kansas Licensed Civil Engineer

Member

National Society Professional Engineers  
Kansas Society Professional Engineers  
Kansas Engineering Society

PHONE 796 X

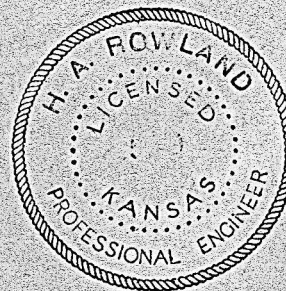
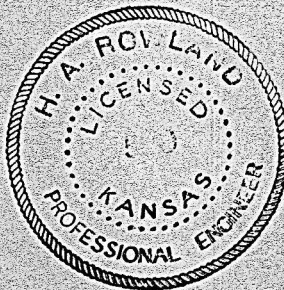
McPHERSON, KANSAS



STATE OF KANSAS, McPHERSON COUNTY, ss.,

THIS IS TO CERTIFY, THAT, The above plat is of a tract of land described as follows: It is the 35.9 feet of lot 3 and the

It is the South 29.8 feet of lot 3, and the North 35.9 feet of lot 4 in Hales Addition to McPherson, Kansas. The above plat is in accordance therewith. The corners are marked by iron pins.



MICROFILM