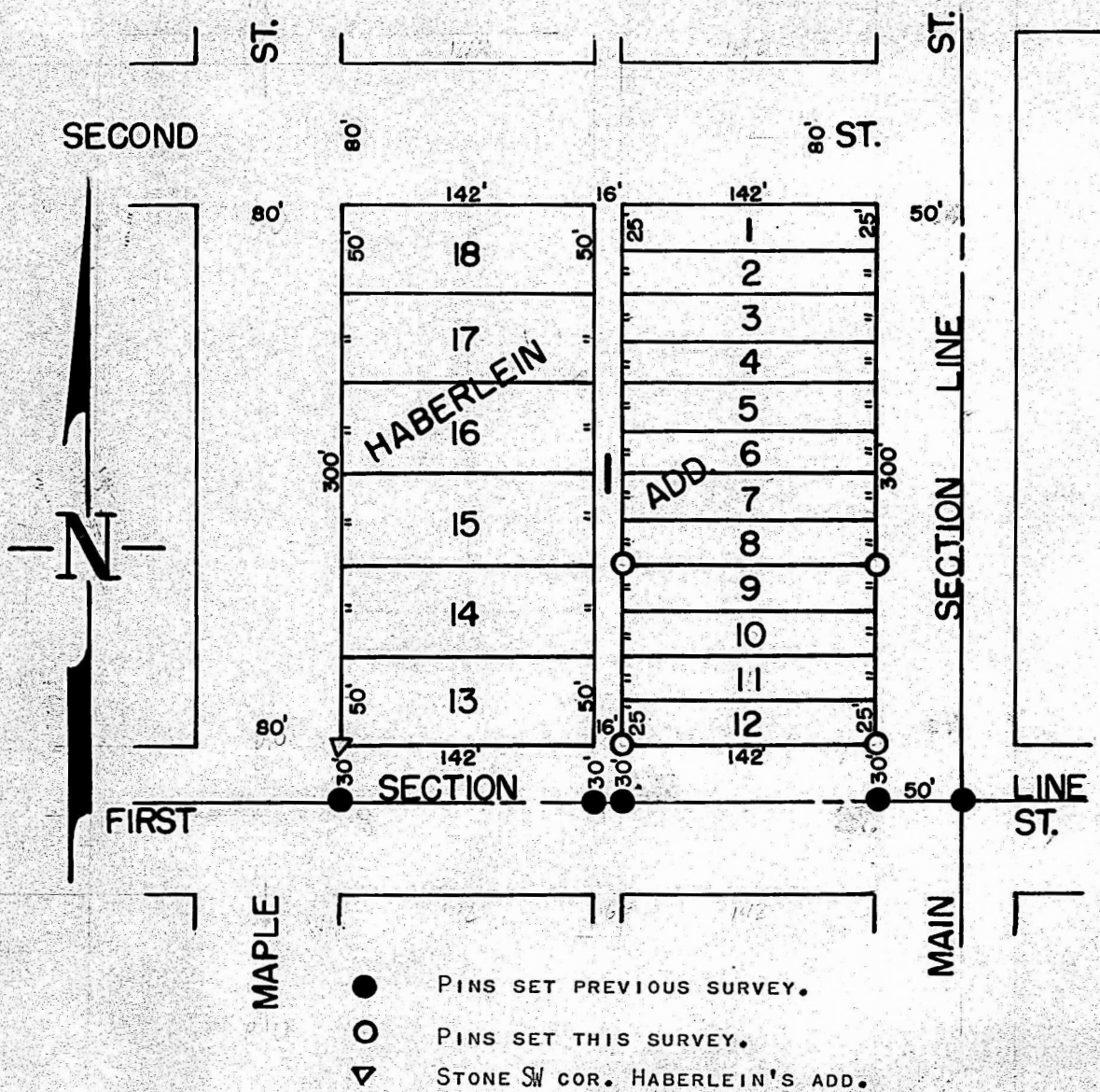


A SURVEY IN HABERLEIN'S ADDITION TO THE  
CITY OF MCPHERSON, KANSAS



STATE OF KANSAS ) SS  
COUNTY OF MCPHERSON)

I, FRANCIS D. WAGNER, COUNTY ENGINEER OF MCPHERSON COUNTY, KANSAS DO  
HEREBY CERTIFY THAT I DID ON THE 13TH DAY OF APRIL, 1959, A SURVEY  
DESCRIBED AS FOLLOWS:

LOT 9 - 10 - 11 - 12 BLOCK 1, HABERLEIN'S ADDITION TO THE CITY  
OF MCPHERSON,

AND THAT THE ACCOMPANYING PLAT IS A TRUE EXHIBIT OF SAID SURVEY.

*Francis D. Wagner*

FRANCIS D. WAGNER  
COUNTY ENGINEER  
MCPHERSON, COUNTY

APRIL 16, 1959

MICROFILM

*Henry Reed*