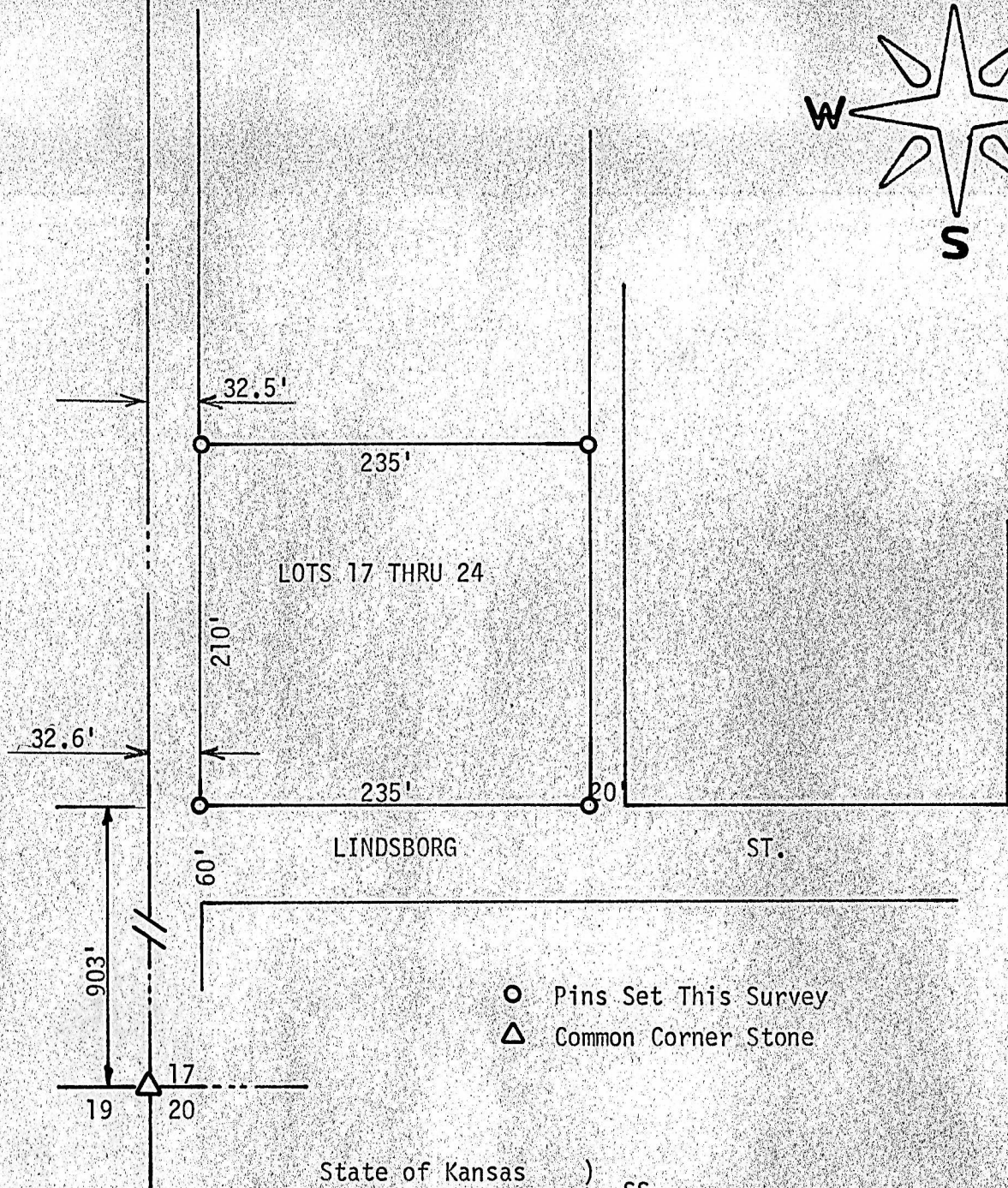
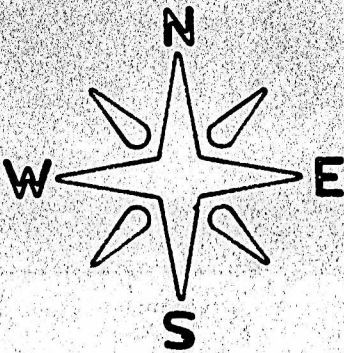


SURVEY OF LOTS 17 THRU 24
BLOCK 2, GUSTAFSON'S ADD.
LINDSBORG, KANSAS



State of Kansas)
County of McPherson) SS

I, F. R. Rankin, County Engineer of McPherson, Kansas, do hereby certify that under my supervision a survey was made of lots 17 through 24, Block 2, Gustafson's Addition to the City of Lindsborg, Kansas and the above plat is a true exhibit of said survey.

Survey called for by Marion Anderson

Signed this 18 day of February, 1972

F. R. Rankin
F. R. Rankin, P. E.
County Engineer
McPherson, Kansas

