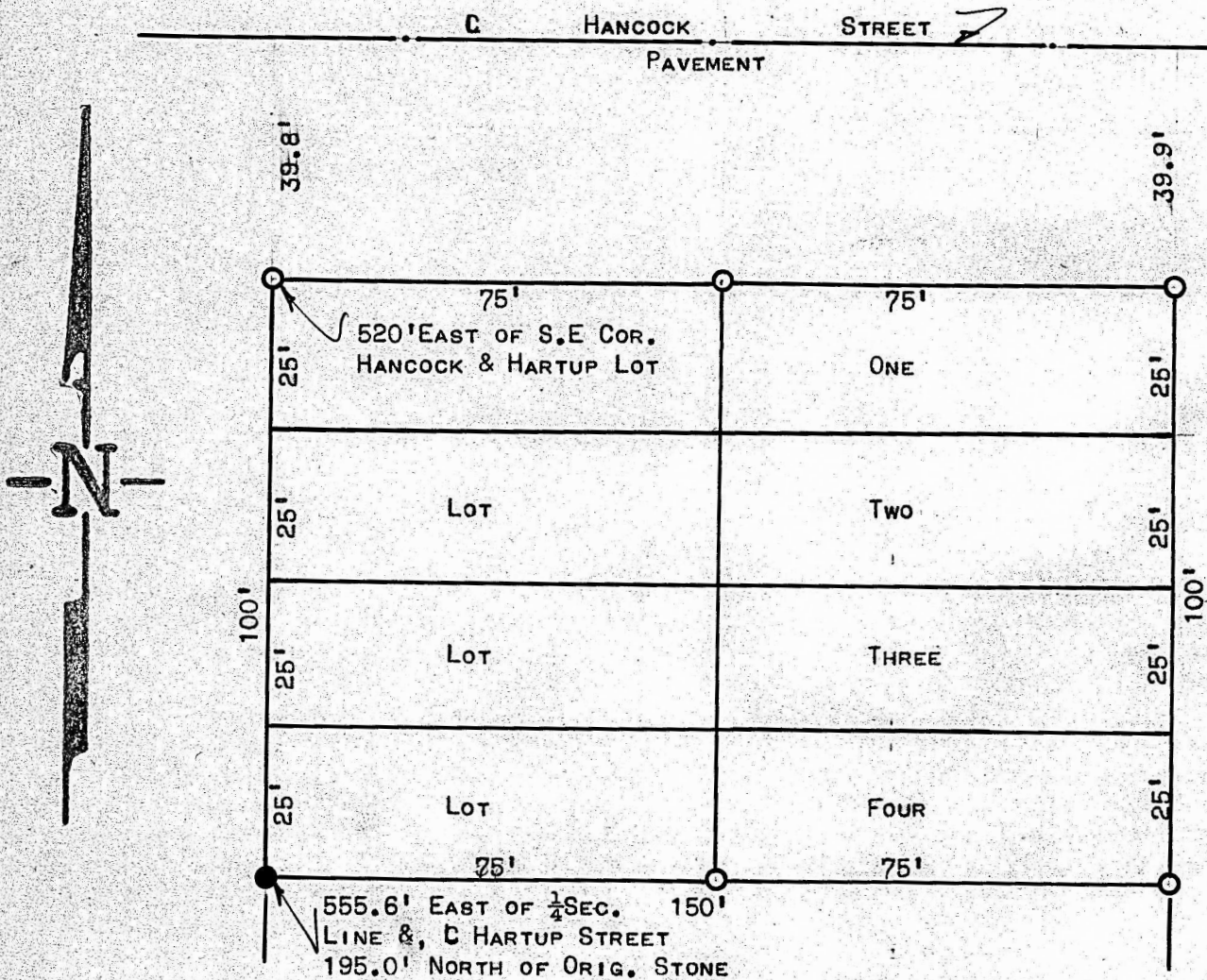


LOTS 1,2,3, & 4 BLOCK 5  
GRANDVIEW ADDITION  
McPHERSON, KANSAS



- PINS PLACED ON SURVEY
- PIN SET PREVIOUS SURVEY

STATE OF KANSAS ) SS  
COUNTY OF MCPHERSON)

I, FRANCIS D. WAGNER, COUNTY ENGINEER OF MCPHERSON COUNTY, KANSAS, DO HEREBY CERTIFY THAT I DID CAUSE TO BE DONE ON THE 29TH DAY OF JUNE, 1957 A SURVEY, OF THE EAST HALF OF LOTS 1, 2, 3, & 4 AND THE WEST HALF OF LOTS 1, 2, 3, & 4, BLOCK 5 GRANDVIEW ADDITION, TO THE CITY OF MCPHERSON, KANSAS AND THAT THE ACCOMPANYING PLAT IS A TRUE EXHIBIT OF SAID SURVEY.

*Francis D. Wagner*

FRANCIS D. WAGNER  
COUNTY ENGINEER  
MCPHERSON COUNTY

3 JULY, 1957

MICROFILM