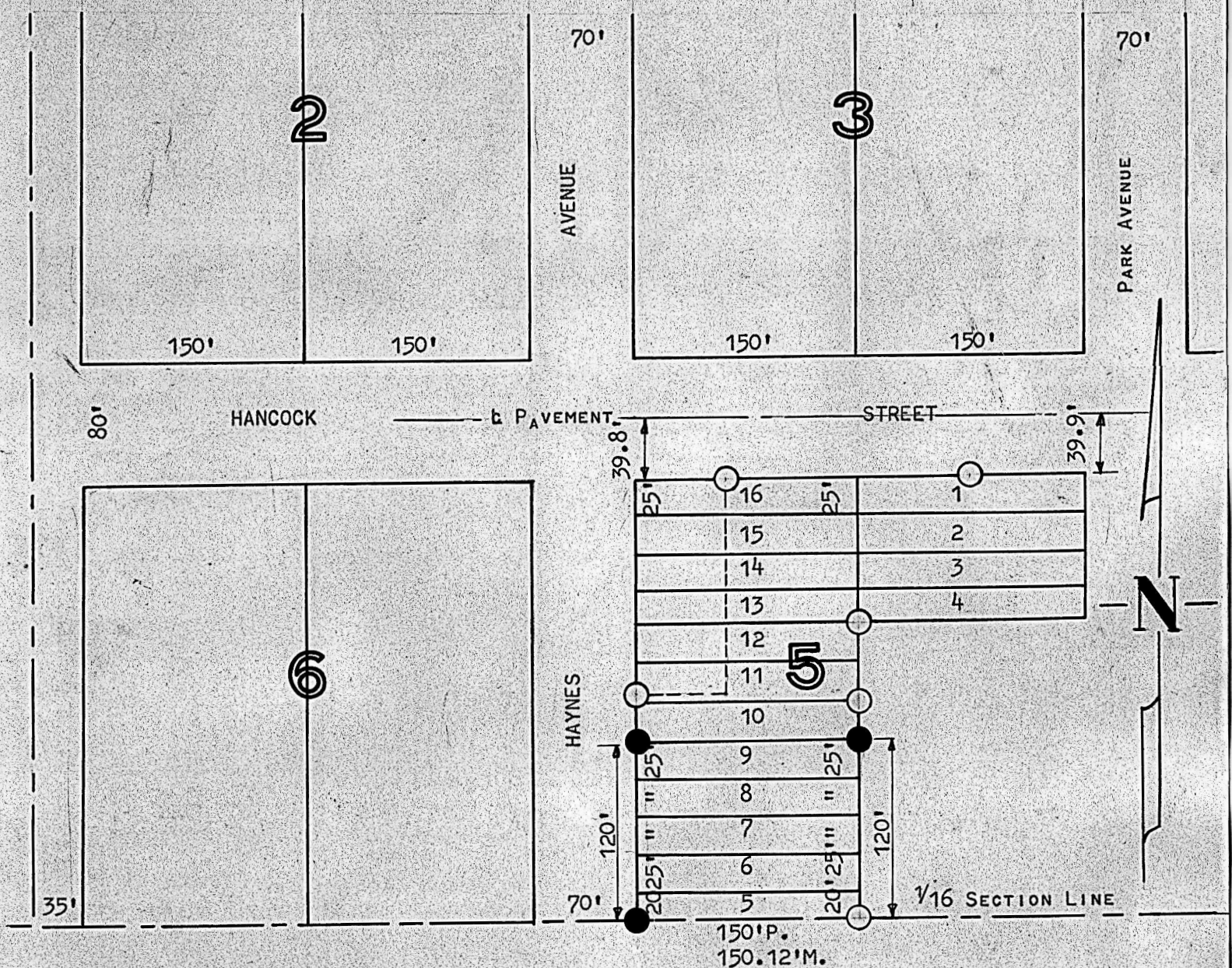


A SURVEY OF LOTS 5, 6, 7, 8, & 9
BLOCK 5, GRAND VIEW ADDITION
MCPHERSON, KANSAS



- PINS FOUND THIS SURVEY
- 1" PIPE SET THIS SURVEY

STATE OF KANSAS) SS
COUNTY OF MCPHERSON)

I, FRANCIS D. WAGNER, COUNTY ENGINEER OF MCPHERSON COUNTY, KANSAS,
DO HEREBY CERTIFY THAT I DID CAUSE TO BE DONE ON THE 9TH DAY OF
MAY, 1961 A SURVEY OF LOTS 5, 6, 7, 8, & 9, BLOCK 5, GRAND VIEW
ADDITION TO THE CITY OF MCPHERSON, KANSAS, AND THAT THE ACCOMPANYING
PLAT IS A TRUE EXHIBIT OF SAID SURVEY.

Francis D. Wagner

FRANCIS D. WAGNER
COUNTY ENGINEER
MCPHERSON COUNTY

MAY 12, 1961



MICROFILM