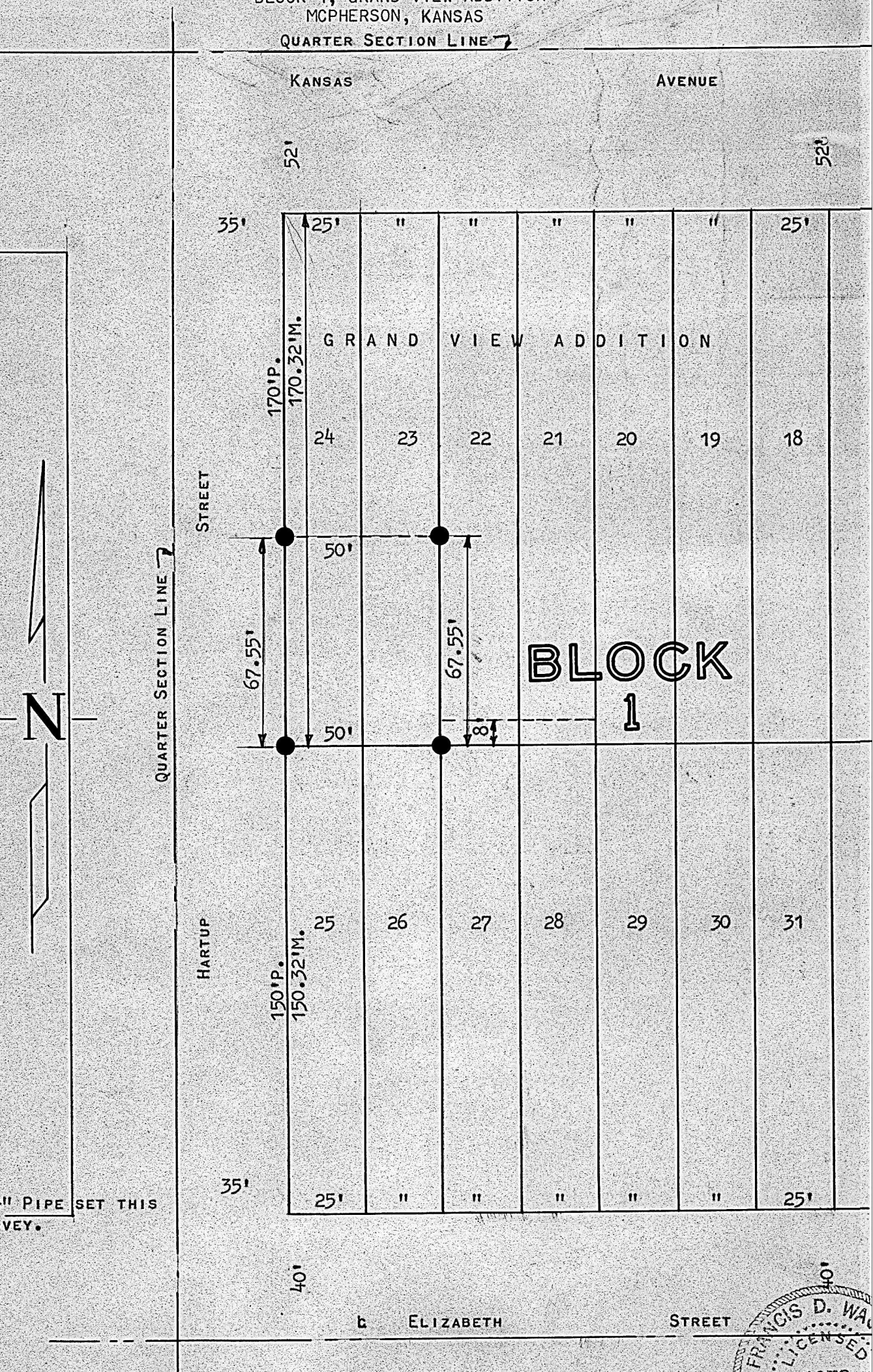


A SURVEY OF PART OF LOTS 23, 24
BLOCK 1, GRAND VIEW ADDITION
MCIPHERSON, KANSAS

QUARTER SECTION LINE 7



STATE OF KANSAS)
COUNTY OF McPHERSON) SS

I, FRANCIS D. WAGNER, COUNTY ENGINEER OF McPHERSON COUNTY, KANSAS, DO HEREBY
CERTIFY THAT I DID CAUSE TO BE DONE ON THE 18TH DAY OF JULY, 1961, A SURVEY
OF THE SOUTH 67.55 FEET OF LOTS 23 AND 24 BLOCK 1, GRAND VIEW ADDITION TO THE
CITY OF McPHERSON, KANSAS, AND THAT THE ACCOMPANYING PLAT IS A TRUE
EXHIBIT OF SAID SURVEY.

JULY 19, 1961

MICROFILM

Francis D. Wagner
FRANCIS D. WAGNER, COUNTY ENGINEER,
McPHERSON COUNTY

