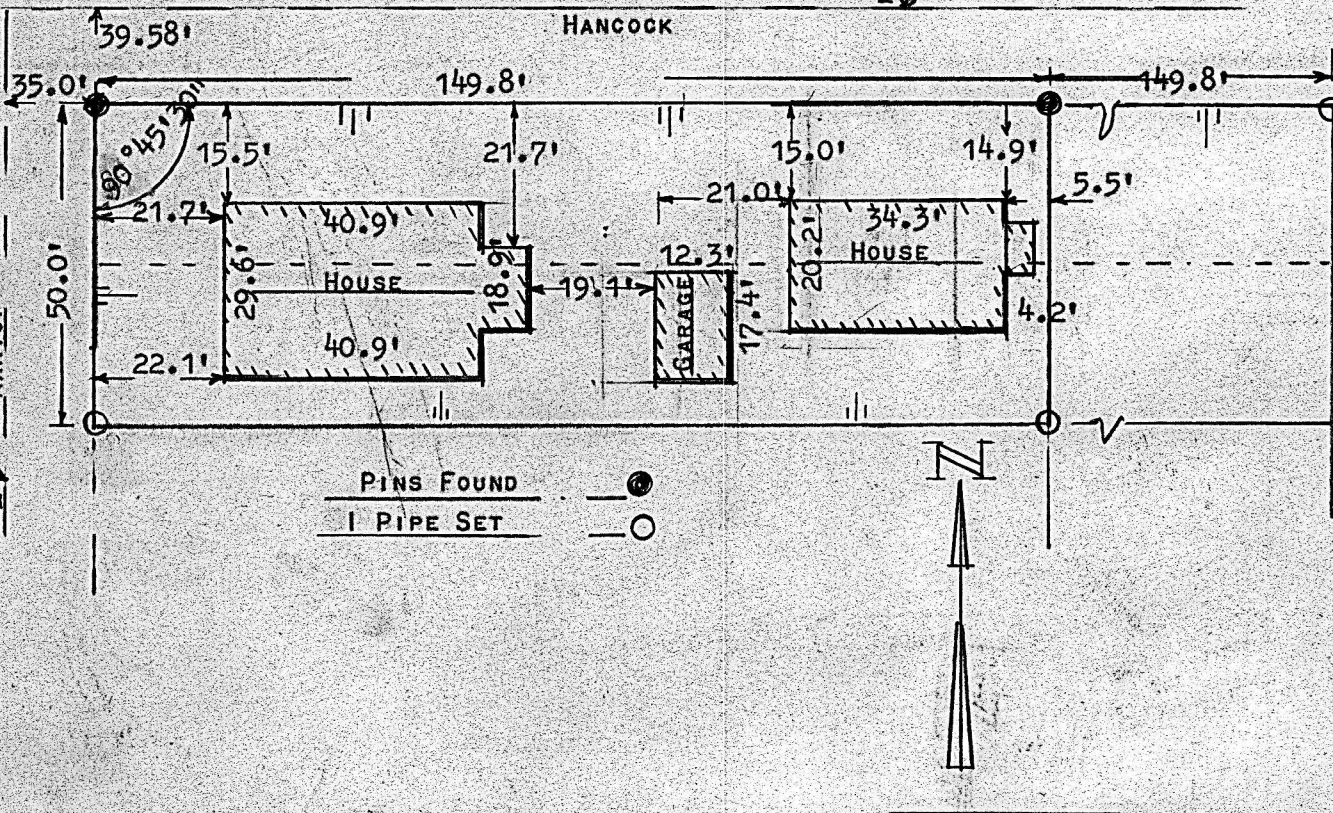


LOTS 23 & 24 BLOCK 6
Grand View ~~COLLIER~~ ADDITION
 CITY OF MCPHERSON

22



STATE OF KANSAS)
 COUNTY OF MCPHERSON) SS

I, FRANCIS R. RANKIN LICENSED PROFESSIONAL ENGINEER OF THE STATE OF KANSAS HEREBY CERTIFY THE ABOVE SURVEY OF LOTS 23 AND 24 BLOCK 6 IN *Grand View* ~~COLLIER~~ ADDITION TO THE CITY OF MCPHERSON, KANSAS, WAS MADE UNDER MY SUPERVISION. I FURTHER CERTIFY THAT ALL LINES DIMENSIONS AND BUILDING LOCATIONS ARE TRUE AND CORRECT SO FAR AS IT IS KNOWN TO ME.

SIGNED THIS 28TH DAY OF MAY AT MCPHERSON, KANSAS.

Francis Rankin
 LICENSED ENGINEER #799

