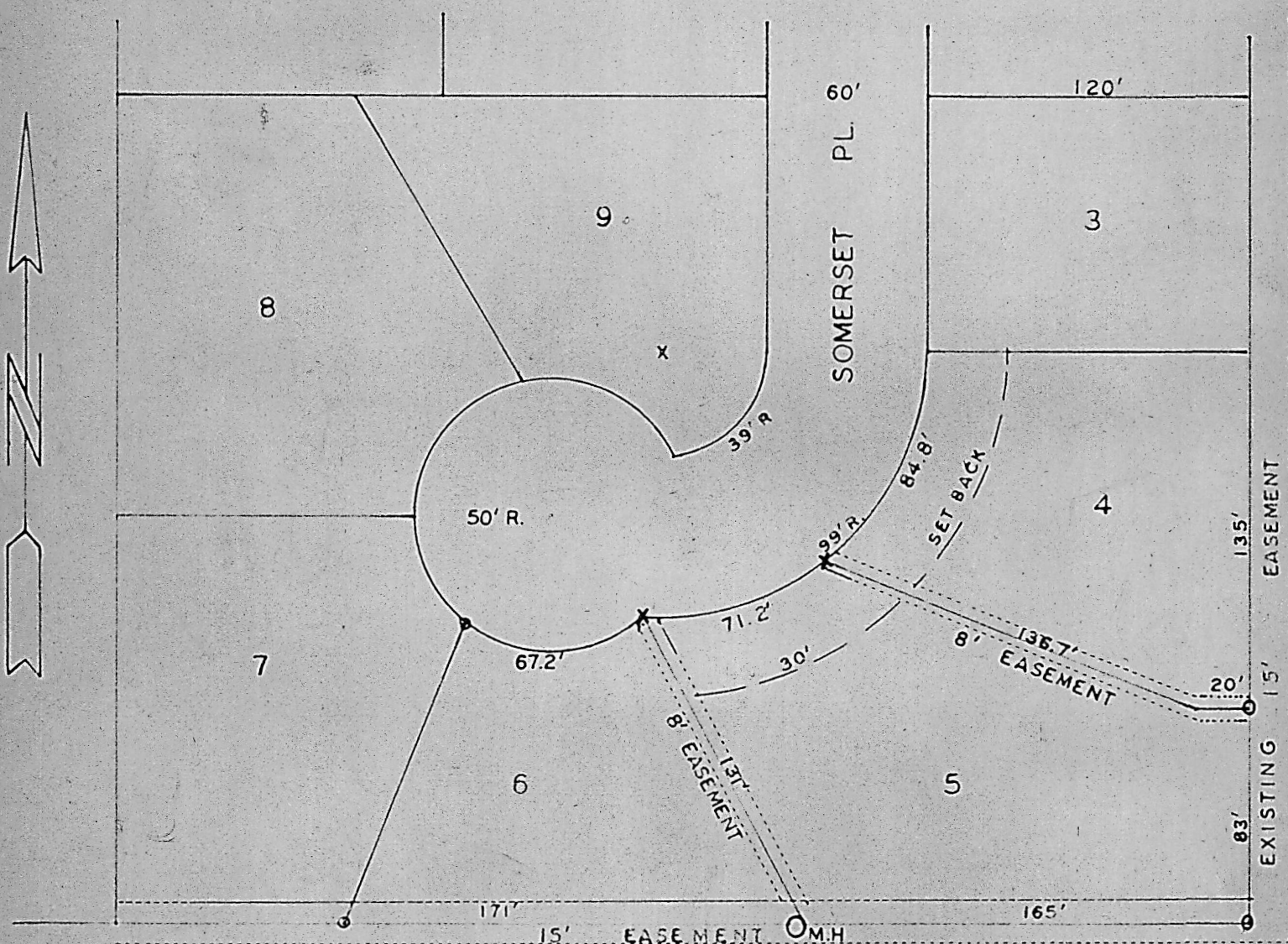


GLENWOOD HEIGHTS ADDITION



X PINS SET
O PINS FOUND

CERTIFICATION:

I, CHARLES E. STACY, CITY ENGINEER OF THE CITY OF MCPHERSON DO HEREBY CERTIFY THAT I DID CAUSE TO BE DONE ON THE 23RD. DAY OF FEBRUARY 1963, A SURVEY TO ESTABLISH THE CORNERS OF LOT 5 IN GLENWOOD HEIGHTS ADDITION OF THE CITY OF MCPHERSON, KANSAS; AND THE ABOVE PLAT IS A TRUE EXHIBIT OF SAID SURVEY.

FEBRUARY 27, 1963

Charles E. Stacy
CHARLES E. STACY
CITY ENGINEER